



West Fargo Public Library Board of Directors
Regular Meeting Agenda
West Fargo City Hall Commission Chambers
2515 6th St E, West Fargo
Thursday, July 9, 2026 5:00 PM
Watch live on YouTube

Meeting Items

1. Call to Order
2. Roll Call
3. Approve Order of Agenda
4. Public Comment

Members of the public will be allowed 2 minutes and 30 seconds to address the Library Board. Board of Directors will not take any official action during this comment period. Please sign up no later than 12 p.m. the day of the Library Board Meeting you wish to attend.

[Library Board Meeting Public Comment](#)

Consent Agenda - Approve the Following:

1. Approval of Minutes – May 14, 2026
2. Approval of Financial Reports

Regular Agenda

Old Business

New Business

1. Election of Officers and Subcommittees (**ACTION**)
2. Discussion on Appointment of New Board Members
3. Q2 Strategic Plan Goals Update
4. Director's Report
5. Adjourn



West Fargo Public Library Board of Directors Meeting

West Fargo City Hall Commission Chambers

2515 6th St E, West Fargo ND

5 p.m. May 14, 2026

[YouTube recording](#)

Board Members Present: Liann Hanson, Tyler Erickson, Tony Stukel, Commissioner Roben Anderson, Sara Westall (via Teams)

Also Present: Library Director Jenna Kahly

I. **Call to Order**

Hanson called the meeting to order at 5 p.m.

II. **Roll Call**

III. **Approve Order of the Agenda**

Commissioner Anderson moved and Erickson seconded to approve the order of the agenda. No opposition. Motion carried.

IV. **Public Comment**

No members of the public signed up for comment.

V. **Consent Agenda**

Commissioner Anderson moved and Erickson seconded to approve the order of the agenda. No opposition. Motion carried.

- Approval of Minutes – April 9, 2026
- Approval of Financial Reports

Regular

Agenda

Old Business

- No old business

New Business

VI. **2025 Annual Report (ACTION)**

Kahly presented the 2025 Annual Report, which included information on the library's collections, usage statistics, services, facilities, and the library's impact on the West Fargo community in 2025. The complete report is available at westfargolib.org. Erickson made a motion to approve the annual report. Hanson seconded. No opposition. Motion carried. Erickson also moved to direct Kahly to submit the 2025 Annual Report to the City Commission. Stukel seconded. No opposition. Motion carried.

VII. Preliminary Budget (ACTION)

Kahly presented the 2027 Preliminary Budget. After discussion, Erickson made the motion to approve the 2027 Preliminary Budget as presented. Commissioner Anderson seconded. No opposition. Motion carried. Hanson made a motion directing Kahly to submit the 2027 Preliminary Budget to the City. Stukel seconded. No opposition. Motion carried.

VIII. Director's Report

Kahly provided updates about the library's operation in April. No action was taken on this item.

IX. Adjourn

Hanson moved to adjourn, Erickson seconded. No opposition. Motion carried at 5:50 p.m. The next meeting is June 11, 2026, at 5 p.m. at the West Fargo City Hall Commission Chambers.

Revenues		Note	Revenue/Transfers		
Fund	Description		YTD Actual	Annual Budget	% Received
7000	PROPERTY TAXES		\$ 1,933,861	\$ 2,544,185	76%
7000	DISCOUNT PROPERTY TAXES		-	(106,856)	0%
7000	STATE AID		44,135	44,626	99%
7000	MISCELLANEOUS REVENUE		6,306	5,000	126%
7000	SPONSORSHIPS		458	3,000	15%
7000	INTEREST ON INVESTMENTS		78,567	142,113	55%
7000	GRANTS		-	-	0%
7000	DONATIONS		500	-	0%
7000	TRANSFER IN		-	-	0%
7010	Library Capital		-	-	0%
	Total Revenues		\$ 2,063,826	\$ 2,632,068	78%
			Expenditure/Transfers		
			YTD Actual	Annual Budget	% Spent
7000	Payroll Expenses		\$ 758,792	\$ 1,972,744	38%
7000	Employee Expenses		19,280	21,305	90%
7000	Professional		-	8,150	0%
7000	Building Expenses		80,915	205,267	39%
7000	Operations		42,560	95,573	45%
7000	Vehicle Expenses		26,810	56,650	47%
7000	Programming		3,110	16,000	19%
7000	Collections		110,144	219,699	50%
7000	Capital Improvements		-	10,000	0%
7000	Promotions		7,319	26,680	27%
	Total Expenditures		\$ 1,048,929	\$ 2,632,068	40%
			Cash Balances		
			Beginning Bal	Change in Bal	Ending Bal
7000	Library		2,719,735.57	(54,862.15)	2,664,873.42
7010	Library Equipment & Maintenance		25,000.00	-	25,000.00
	Total Cash		\$ 2,744,736	\$ (54,862)	\$ 2,689,873

Notes to the Financials

Payroll Expenses	Permanent Emp Salaries; PT salaries; Social Security; Retirement; Workforce Safety Insurance; Unemployment; Health Insurance; Cost Allocation
Professional	Attorney; Professional Services
Building	Lease/Rental; Insurance
Employee	Employee Development; Medical/Vaccines; Recruitment / Employee Testing; Professional Publications; Memberships
Operations	Property Insurance; Telephone; Office Supplies; Service Agreements - Contracts; Misc; Technology; Supplies; Furn & Equip- Non Depreciated <\$5000; Postal Meter Rent; Emergency Medical Supplies; Service Charges
Vehicle	Gas and Oil; Vehicles Maintenance;
Programming	Programming
Collections	E Resources; Books; Magazines; Audio Video; Library of Things; Cataloging; ODIN
CIP	Transfers Out
Promotions	Printing; Promotional Activities

CITY OF WEST FARGO, ND
 Revenue Budget vs. Actual
 For the Accounting Period: June 2026

Fund	Fund Description	Account	Account Description	Received		Estimated Revenue	Revenue to be Received
				Current Month	Received YTD		
7000	LIBRARY	310001	PROPERTY TAXES	7,082.13	1,933,861.15	2,544,185.00	610,323.85
7000	LIBRARY	310002	DISCOUNT PROPERTY TAXES	0.00	0.00	-106,856.00	-106,856.00
7000	LIBRARY	335600	STATE AID	44,134.69	44,134.69	44,626.00	491.31
7000	LIBRARY	360000	MISCELLANEOUS REVENUE	718.73	6,305.55	5,000.00	-1,305.55
7000	LIBRARY	360100	SPONSORSHIPS	0.00	457.60	3,000.00	2,542.40
7000	LIBRARY	361000	INTEREST ON INVESTMENTS	0.00	78,567.48	142,113.00	63,545.52
7000	LIBRARY	363400	GRANTS	0.00	0.00	0.00	0.00
7000	LIBRARY	375000	DONATIONS	0.00	500.00	0.00	-500.00
7000	LIBRARY	372500	SALE OF EQUIPMENT	1,191.00	1,191.00	0.00	-1,191.00
7000	LIBRARY	383000	TRANSFER IN	0.00	0.00	0.00	0.00
				53,126.55	2,065,017.47	2,632,068.00	567,050.53

Statement of Expenditure - Budget vs. Actual Report
 For the Accounting Period: June 2026

Fund	Account	Object	Committed YTD	Current Appropriation	
7000 LIBRARY	411600 LIBRARY	110 PERMANENT EMP SALARIES	516,543.32	1,315,880.00	Payroll
7000 LIBRARY	411600 LIBRARY	114 PART TIME SALARIES	37,644.37	134,448.00	Payroll
7000 LIBRARY	411600 LIBRARY	220 SOCIAL SECURITY	40,614.65	110,686.00	Payroll
7000 LIBRARY	411600 LIBRARY	230 RETIREMENT	82,795.79	212,865.00	Payroll
7000 LIBRARY	411600 LIBRARY	240 WORKFORCE SAFETY INSURANCE	676.95	3,124.00	Payroll
7000 LIBRARY	411600 LIBRARY	250 UNEMPLOYMENT	0.00	500.00	Payroll
7000 LIBRARY	411600 LIBRARY	312 ATTORNEY	0.00	5,150.00	Professional
7000 LIBRARY	411600 LIBRARY	320 HEALTH INSURANCE	80,516.87	195,241.00	Payroll
7000 LIBRARY	411600 LIBRARY	321 PROPERTY INSURANCE	1,468.42	0.00	Operations
7000 LIBRARY	411600 LIBRARY	340 EMPLOYEE DEVELOPMENT	16,861.28	12,950.00	Employee
7000 LIBRARY	411600 LIBRARY	356 TELEPHONE	942.83	3,044.00	Operations
7000 LIBRARY	411600 LIBRARY	360 PRINTING & MAILING PROJECTS	4,756.45	13,000.00	Promotions
7000 LIBRARY	411600 LIBRARY	387 MEDICAL/VACCINES	0.00	500.00	Employee
7000 LIBRARY	411600 LIBRARY	389 LEASE/RENTAL	80914.55	199211.00	Building
7000 LIBRARY	411600 LIBRARY	399 RECRUITMENT/EMPLOYMENT TESTING	0.00	3000.00	Employee
7000 LIBRARY	411600 LIBRARY	410 OFFICE SUPPLIES	4,827.31	15,750.00	Operations
7000 LIBRARY	411600 LIBRARY	418 PROFESSIONAL SERVICES	0.00	3,000.00	Professional
7000 LIBRARY	411600 LIBRARY	424 GAS AND OIL	83.23	2,000.00	vehicle
7000 LIBRARY	411600 LIBRARY	427 VEHICLES MAINTENANCE	0.00	1,200.00	vehicle
7000 LIBRARY	411600 LIBRARY	428 SERVICE AGREEMENTS-CONTRACTS	7,115.67	22,008.00	Operations
7000 LIBRARY	411600 LIBRARY	490 MISC	54.21	500.00	Operations
7000 LIBRARY	411600 LIBRARY	497 TECHNOLOGY	25,792.24	37,379.00	Operations
7000 LIBRARY	411600 LIBRARY	500 SUPPLIES	0.00	850.00	Operations
7000 LIBRARY	411600 LIBRARY	641 FURN & EQUIP-NON DEPRECIATED <\$5000	1,551.00	11,520.00	Operations
7000 LIBRARY	411600 LIBRARY	644 POSTAL METER RENT	0.00	2,772.00	Operations
7000 LIBRARY	411600 LIBRARY	648 PROFESSIONAL PUBLICATIONS	0.00	535.00	Employee
7000 LIBRARY	411600 LIBRARY	649 PROGRAMMING	3,110.27	16,000.00	Programming
7000 LIBRARY	411600 LIBRARY	650 E RESOURCES	24,121.64	44,065.00	Collections
7000 LIBRARY	411600 LIBRARY	662 BOOKS	44,206.86	112,324.00	Collections
7000 LIBRARY	411600 LIBRARY	663 MAGAZINES	4,572.07	4,850.00	Collections
7000 LIBRARY	411600 LIBRARY	664 AUDIO VIDEO	7,863.83	16,250.00	Collections
7000 LIBRARY	411600 LIBRARY	667 MEMBERSHIPS	2,419.00	4,320.00	Employee
7000 LIBRARY	411600 LIBRARY	669 INSURANCE	0.00	6,056.00	Building
7000 LIBRARY	411600 LIBRARY	672 EMERGENCY MEDICAL SUPPLIES	108.72	0.00	Operations
7000 LIBRARY	411600 LIBRARY	680 Library of Things	129.98	4,500.00	Collections
7000 LIBRARY	411600 LIBRARY	689 PROMOTIONAL ACTIVITIES	2,562.19	13,680.00	Promotions
7000 LIBRARY	411600 LIBRARY	740 SERVICE CHARGES	699.95	1,750.00	Operations
7000 LIBRARY	411600 LIBRARY	880 COST ALLOCATIONS	26,726.52	53,450.00	vehicle
7000 LIBRARY	411600 LIBRARY	890 TRANSFERS OUT	0.00	10,000.00	CIP
7000 LIBRARY	411600 LIBRARY	901 CATALOGING	0.00	3,210.00	Collections
7000 LIBRARY	411600 LIBRARY	994 ODIN	29249.20	34,500.00	Collections
			1,048,929.37	2,632,068.00	
			2,744,735.57	(54,862.15)	
			(1,695,806.20)	2,686,930.15	

Funds 7000-7000, Accounts 411600-411600, AND ACCOUNT=411600

Fund/Account/ Doc/Line #	Check	Description	Invoice Invoice Date	Invoice Date	End Month/ Amount	Year to Date/ Period	Budget/ Vendor	Available Appropriation	%
7000 LIBRARY									
411600 LIBRARY									
110 PERMANENT EMP SALARIES									
JV	6437141	Payroll	05/01/2026	/ /	47,925.90	5/26			
JV	6459131	Payroll	05/15/2026	/ /	47,519.68	5/26			
JV	6501 93	Payroll	05/29/2026	/ /	47,788.31	5/26			
		Object Total:			143,233.89	468,502.34	1,315,880.00	847,377.66	36%
114 PART TIME SALARIES									
JV	6437142	Payroll	05/01/2026	/ /	3,711.44	5/26			
JV	6459132	Payroll	05/15/2026	/ /	3,566.17	5/26			
JV	6501 94	Payroll	05/29/2026	/ /	3,354.75	5/26			
		Object Total:			10,632.36	34,558.01	134,448.00	99,889.99	26%
220 SOCIAL SECURITY									
JV	6437143	Payroll	05/01/2026	/ /	3,723.52	5/26			
JV	6459133	Payroll	05/15/2026	/ /	3,725.48	5/26			
JV	6501 95	Payroll	05/29/2026	/ /	3,912.43	5/26			
		Object Total:			11,361.43	36,885.93	110,686.00	73,800.07	33%
230 RETIREMENT									
JV	6437144	Payroll	05/01/2026	/ /	7,883.29	5/26			
JV	6459134	Payroll	05/15/2026	/ /	7,671.66	5/26			
JV	6501 96	Payroll	05/29/2026	/ /	7,714.79	5/26			
		Object Total:			23,269.74	75,125.48	212,865.00	137,739.52	35%
240 WORKFORCE SAFETY INSURANCE									
		Object Total:			0.00	676.95	3,124.00	2,447.05	22%
245 CORPORATE EDUCATION (DO NOT USE)									
		Object Total:			0.00	0.00	0.00	0.00	%
250 UNEMPLOYMENT									
		Object Total:			0.00	0.00	500.00	500.00	%
312 ATTORNEY									
		Object Total:			0.00	0.00	5,150.00	5,150.00	%
320 HEALTH INSURANCE									
JV	6437145	Payroll	05/01/2026	/ /	11,050.24	5/26			
JV	6459135	Payroll	05/15/2026	/ /	8,602.10	5/26			
		Object Total:			19,652.34	71,914.55	195,241.00	123,326.45	37%
321 PROPERTY INSURANCE									
		Object Total:			0.00	1,468.42	0.00	-1,468.42	%
333 BUILDING RENTAL (DO NOT USE)									
		Object Total:			0.00	0.00	0.00	0.00	%
340 EMPLOYEE DEVELOPMENT									
CC	2005 1	SHERATON MINNEAPOLIS	999999	04/03/26	733.77	5/26	3162 VISA LIBRARY #2		
CC	2005 2	MARRIOTT MINNEAPOLIS	999999	04/03/26	891.30	5/26	3162 VISA LIBRARY #2		
CC	2005 4	BP OF SAINT MICHAEL	999999	04/03/26	38.47	5/26	3162 VISA LIBRARY #2		
CC	2007 12	THAI ORCHID	999999	04/23/26	150.76	5/26	3161 VISA LIBRARY #1		
CL	132179 1	118569 CLIFTONSTRENGTHS		04/30/26	7,815.00	5/26	525 VILLAGE FAMILY SERVICE		

Funds 7000-7000, Accounts 411600-411600, AND ACCOUNT=411600

Fund/Account/ Doc/Line #	Check	Description	Invoice Invoice Date	End Month/ Amount	Year to Date/ Period	Budget/ Vendor	Available Appropriation	%
7000 LIBRARY								
411600 LIBRARY								
		WORKSHOP						
			Object Total:	9,629.30	16,220.60	12,950.00	-3,270.60	125%
356 TELEPHONE								
CL 132295 31	-93231	april 2026 - library	04/08/26	188.56	5/26	3668 VERIZON WIRELESS		
			Object Total:	188.56	754.27	3,044.00	2,289.73	25%
360 PRINTING & MAILING PROJECTS								
			/ /					
			Object Total:	0.00	4,120.50	13,000.00	8,879.50	32%
387 MEDICAL/VACCINES								
			/ /					
			Object Total:	0.00	0.00	500.00	500.00	%
389 LEASE/RENTAL								
CL 131992 2	-93554	May 2026 Lease - Satellite Lib	05/01/26	2,777.43	5/26	5229 AMB INVESTMENTS, LLC		
			Object Total:	2,777.43	67,493.57	199,211.00	131,717.43	34%
399 RECRUITMENT/EMPLOYMENT TESTING								
			/ /					
			Object Total:	0.00	0.00	3,000.00	3,000.00	%
410 OFFICE SUPPLIES								
CC 2007 4		OFFICE SUPPLIES	3490 04/10/26	61.32	5/26	3161 VISA LIBRARY #1		
CC 2007 5		CREDIT	3490 04/09/26	-6.47	5/26	3161 VISA LIBRARY #1		
CC 2007 9		DRY ERASE MARKERS	3490 04/19/26	10.79	5/26	3161 VISA LIBRARY #1		
CC 2007 11		HAND SANITIZER	3490 04/21/26	48.92	5/26	3161 VISA LIBRARY #1		
CC 2007 14		WATER MACHINE LEASE	999999 04/30/26	100.00	5/26	3161 VISA LIBRARY #1		
CL 132177 1	-93315	TISSUES;PLATES;PAPER;BO WLS	05/08/26	138.21	5/26	351 BUSINESS ESSENTIALS		
CL 132462 1	-93134	TISSUES;PAPER PLATES;BOWLS	05/11/26	153.43	5/26	351 BUSINESS ESSENTIALS		
			Object Total:	506.20	1,463.78	15,750.00	14,286.22	9%
418 PROFESSIONAL SERVICES								
			/ /					
			Object Total:	0.00	0.00	3,000.00	3,000.00	%
420 OPERATION & MAINTENANCE								
			/ /					
			Object Total:	0.00	0.00	0.00	0.00	%
424 GAS AND OIL								
JV 6458 12		April fuel usage allocation	/ /	28.97	5/26			
JV 6542 12		May fuel usage allocation	/ /		5/26			
			Object Total:	28.97	83.23	2,000.00	1,916.77	4%
427 VEHICLES MAINTENANCE								
			/ /					
			Object Total:	0.00	0.00	1,200.00	1,200.00	%

Funds 7000-7000, Accounts 411600-411600, AND ACCOUNT=411600

Fund/Account/ Doc/Line # Check	Description	Invoice Invoice Date	End Month/ Amount	Year to Date/ Period	Budget/ Vendor	Available Appropriation	%
7000 LIBRARY							
411600 LIBRARY							
428 SERVICE AGREEMENTS-CONTRACTS							
CL 132178 1 -93314	LEASE FOR PRINTERS	04/27/26	754.15	5/26 5349	MARCO TECHNOLOGIES, LLC		
	Object Total:		754.15	6,130.52	22,008.00	15,877.48	28%
490 MISC		/ /					
	Object Total:		0.00	54.21	500.00	445.79	11%
497 TECHNOLOGY		/ /					
	Object Total:		0.00	12,348.86	37,379.00	25,030.14	33%
500 SUPPLIES		/ /					
	Object Total:		0.00	0.00	850.00	850.00	%
640 FURNITURE & EQUIPMENT (DO NOT USE)		/ /					
	Object Total:		0.00	0.00	0.00	0.00	%
641 FURN & EQUIP-NON DEPRECIATED <\$5000		/ /					
	Object Total:		0.00	1,551.00	11,520.00	9,969.00	13%
644 POSTAL METER RENT		/ /					
	Object Total:		0.00	0.00	2,772.00	2,772.00	%
648 PROFESSIONAL PUBLICATIONS		/ /					
	Object Total:		0.00	0.00	535.00	535.00	%
649 PROGRAMMING							
CC 2006 2	GAMING GEEK	999999 04/20/26	5.10	5/26 4576	VISA LIBRARY #3		
CC 2006 3	ONEBOOKSHELF	999999 04/20/26	85.13	5/26 4576	VISA LIBRARY #3		
CC 2006 6	INTERNATIONAL TRANS FEE	999999 04/20/26	0.05	5/26 4576	VISA LIBRARY #3		
CC 2007 7	AS PROGRAM SUPPLIES	3490 04/17/26	12.99	5/26 3161	VISA LIBRARY #1		
CC 2007 8	AS & YOUTH PROGRAM SUPPLIES	3490 04/19/26	400.66	5/26 3161	VISA LIBRARY #1		
CC 2007 10	AS & YOUTH PROGRAM SUPPLIES	3490 04/20/26	15.99	5/26 3161	VISA LIBRARY #1		
CC 2007 13	AS PROGRAM SUPPLIES	3490 04/29/26	90.10	5/26 3161	VISA LIBRARY #1		
CC 2007 15	ERGONOMIC MOUSE	3490 05/01/26	101.99	5/26 3161	VISA LIBRARY #1		
CL 132176 1 -93267	AS PROGRAM SUPPLIES	05/09/26	58.41	5/26 3490	AMAZON CAPITAL SERVICES		
	Object Total:		770.42	1,581.01	16,000.00	14,418.99	10%
650 E RESOURCES		/ /					
	Object Total:		0.00	20,693.25	44,065.00	23,371.75	47%
653 CAPITAL IMPROVEMENTS		/ /					
	Object Total:		0.00	0.00	0.00	0.00	%

Funds 7000-7000, Accounts 411600-411600, AND ACCOUNT=411600

Fund/Account/ Doc/Line #	Check	Description	Invoice Invoice	Date	End Month/ Amount	Year to Date/ Period	Budget/ Vendor	Available Appropriation	%
7000 LIBRARY									
411600 LIBRARY									
661 POSTAGE/FREIGHT/SHIPPING									
Object Total:					0.00	0.00	0.00	0.00	%
662 BOOKS									
CC 2007 2		BOOKS	3490	04/07/26	335.70	5/26	3161 VISA LIBRARY #1		
CC 2007 3		BOOKS	3490	04/09/26	40.27	5/26	3161 VISA LIBRARY #1		
CC 2007 6		BOOKS	3490	04/15/26	36.18	5/26	3161 VISA LIBRARY #1		
CL 131970 1	-93444	BOOKS		04/15/26	109.00	5/26	4592 INGRAM LIBRARY SERVICES		
CL 131970 2	-93444	BOOKS		04/15/26	35.33	5/26	4592 INGRAM LIBRARY SERVICES		
CL 131970 3	-93444	BOOKS		04/15/26	31.14	5/26	4592 INGRAM LIBRARY SERVICES		
CL 131970 4	-93444	BOOKS		04/15/26	12.98	5/26	4592 INGRAM LIBRARY SERVICES		
CL 131970 5	-93444	BOOKS		04/15/26	39.05	5/26	4592 INGRAM LIBRARY SERVICES		
CL 131970 6	-93444	BOOKS		04/15/26	18.79	5/26	4592 INGRAM LIBRARY SERVICES		
CL 131970 7	-93444	BOOKS		04/15/26	35.32	5/26	4592 INGRAM LIBRARY SERVICES		
CL 131970 8	-93444	BOOKS		04/15/26	14.85	5/26	4592 INGRAM LIBRARY SERVICES		
CL 131970 9	-93444	BOOKS		04/15/26	14.23	5/26	4592 INGRAM LIBRARY SERVICES		
CL 131970 10	-93444	BOOKS		04/15/26	73.98	5/26	4592 INGRAM LIBRARY SERVICES		
CL 131970 11	-93444	BOOKS		04/15/26	55.44	5/26	4592 INGRAM LIBRARY SERVICES		
CL 131970 12	-93444	BOOKS		04/15/26	60.32	5/26	4592 INGRAM LIBRARY SERVICES		
CL 131970 13	-93444	BOOKS		04/15/26	11.60	5/26	4592 INGRAM LIBRARY SERVICES		
CL 131970 14	-93444	BOOKS		04/15/26	13.69	5/26	4592 INGRAM LIBRARY SERVICES		
CL 131970 15	-93444	BOOKS		04/15/26	54.69	5/26	4592 INGRAM LIBRARY SERVICES		
CL 131970 16	-93444	BOOKS		04/15/26	20.49	5/26	4592 INGRAM LIBRARY SERVICES		
CL 131970 17	-93444	BOOKS		04/17/26	36.24	5/26	4592 INGRAM LIBRARY SERVICES		
CL 131970 18	-93444	BOOKS		04/17/26	28.43	5/26	4592 INGRAM LIBRARY SERVICES		
CL 131970 19	-93444	BOOKS		04/17/26	13.90	5/26	4592 INGRAM LIBRARY SERVICES		
CL 131970 20	-93444	BOOKS		04/17/26	73.93	5/26	4592 INGRAM LIBRARY SERVICES		
CL 131970 21	-93444	BOOKS		04/17/26	21.23	5/26	4592 INGRAM LIBRARY SERVICES		
CL 131970 22	-93444	BOOKS		04/17/26	34.64	5/26	4592 INGRAM LIBRARY SERVICES		
CL 131970 23	-93444	BOOKS		04/20/26	55.91	5/26	4592 INGRAM LIBRARY SERVICES		
CL 131970 24	-93444	BOOKS		04/20/26	26.40	5/26	4592 INGRAM LIBRARY SERVICES		
CL 131970 25	-93444	BOOKS		04/20/26	14.98	5/26	4592 INGRAM LIBRARY SERVICES		
CL 131970 26	-93444	BOOKS		04/20/26	39.34	5/26	4592 INGRAM LIBRARY SERVICES		
CL 131970 27	-93444	BOOKS		04/20/26	13.60	5/26	4592 INGRAM LIBRARY SERVICES		
CL 131970 28	-93444	BOOKS		04/20/26	31.66	5/26	4592 INGRAM LIBRARY SERVICES		
CL 131970 29	-93444	BOOKS		04/20/26	28.10	5/26	4592 INGRAM LIBRARY SERVICES		
CL 131970 30	-93444	BOOKS		04/20/26	87.56	5/26	4592 INGRAM LIBRARY SERVICES		
CL 131970 31	-93444	BOOKS		04/20/26	25.87	5/26	4592 INGRAM LIBRARY SERVICES		
CL 131970 32	-93444	BOOKS		04/20/26	18.41	5/26	4592 INGRAM LIBRARY SERVICES		
CL 131970 33	-93444	BOOKS		04/20/26	23.54	5/26	4592 INGRAM LIBRARY SERVICES		
CL 131970 34	-93444	BOOKS		04/21/26	30.05	5/26	4592 INGRAM LIBRARY SERVICES		
CL 131970 35	-93444	BOOKS		04/21/26	24.98	5/26	4592 INGRAM LIBRARY SERVICES		
CL 131970 36	-93444	BOOKS		04/22/26	20.71	5/26	4592 INGRAM LIBRARY SERVICES		
CL 131970 37	-93444	BOOKS		04/22/26	62.40	5/26	4592 INGRAM LIBRARY SERVICES		
CL 131970 38	-93444	BOOKS		04/22/26	13.96	5/26	4592 INGRAM LIBRARY SERVICES		
CL 131970 39	-93444	BOOKS		04/22/26	81.22	5/26	4592 INGRAM LIBRARY SERVICES		
CL 131970 40	-93444	BOOKS		04/22/26	14.05	5/26	4592 INGRAM LIBRARY SERVICES		
CL 131970 41	-93444	BOOKS		04/22/26	21.30	5/26	4592 INGRAM LIBRARY SERVICES		

Funds 7000-7000, Accounts 411600-411600, AND ACCOUNT=411600

Fund/Account/ Doc/Line #	Check	Description	Invoice	Invoice Date	End Month/ Amount	Year to Date/ Period	Budget/ Vendor	Available Appropriation	%
7000 LIBRARY									
411600 LIBRARY									
CL 131970 42	-93444	BOOKS		04/22/26	19.80	5/26	4592 INGRAM LIBRARY SERVICES		
CL 131970 43	-93444	BOOKS		04/22/26	25.68	5/26	4592 INGRAM LIBRARY SERVICES		
CL 131970 44	-93444	BOOKS		04/23/26	21.68	5/26	4592 INGRAM LIBRARY SERVICES		
CL 131970 45	-93444	BOOKS		04/23/26	14.30	5/26	4592 INGRAM LIBRARY SERVICES		
CL 131970 46	-93444	BOOKS		04/23/26	29.84	5/26	4592 INGRAM LIBRARY SERVICES		
CL 131970 47	-93444	BOOKS		04/23/26	14.78	5/26	4592 INGRAM LIBRARY SERVICES		
CL 131970 48	-93444	BOOKS		04/23/26	14.19	5/26	4592 INGRAM LIBRARY SERVICES		
CL 131970 49	-93444	BOOKS		04/23/26	23.60	5/26	4592 INGRAM LIBRARY SERVICES		
CL 131970 50	-93444	BOOKS		04/23/26	16.86	5/26	4592 INGRAM LIBRARY SERVICES		
CL 131970 51	-93444	BOOKS		04/23/26	18.45	5/26	4592 INGRAM LIBRARY SERVICES		
CL 131970 52	-93444	BOOKS		04/24/26	17.21	5/26	4592 INGRAM LIBRARY SERVICES		
CL 131970 53	-93444	BOOKS		04/24/26	14.15	5/26	4592 INGRAM LIBRARY SERVICES		
CL 131970 54	-93444	BOOKS		04/24/26	15.34	5/26	4592 INGRAM LIBRARY SERVICES		
CL 131970 55	-93444	BOOKS		04/24/26	20.23	5/26	4592 INGRAM LIBRARY SERVICES		
CL 131970 56	-93444	BOOKS		04/24/26	40.39	5/26	4592 INGRAM LIBRARY SERVICES		
CL 131970 57	-93444	BOOKS		04/24/26	22.07	5/26	4592 INGRAM LIBRARY SERVICES		
CL 131970 58	-93444	BOOKS		04/24/26	36.26	5/26	4592 INGRAM LIBRARY SERVICES		
CL 131970 59	-93444	BOOKS		04/24/26	14.68	5/26	4592 INGRAM LIBRARY SERVICES		
CL 131970 60	-93444	BOOKS		04/24/26	14.74	5/26	4592 INGRAM LIBRARY SERVICES		
CL 131970 61	-93444	BOOKS		04/24/26	25.03	5/26	4592 INGRAM LIBRARY SERVICES		
CL 131970 62	-93444	BOOKS		04/24/26	12.72	5/26	4592 INGRAM LIBRARY SERVICES		
CL 131970 63	-93444	BOOKS		04/24/26	25.62	5/26	4592 INGRAM LIBRARY SERVICES		
CL 131970 64	-93444	BOOKS		04/24/26	14.77	5/26	4592 INGRAM LIBRARY SERVICES		
CL 131970 65	-93444	BOOKS		04/24/26	34.76	5/26	4592 INGRAM LIBRARY SERVICES		
CL 131970 66	-93444	BOOKS		04/24/26	12.21	5/26	4592 INGRAM LIBRARY SERVICES		
CL 131970 67	-93444	BOOKS		04/24/26	8.90	5/26	4592 INGRAM LIBRARY SERVICES		
CL 131970 68	-93444	BOOKS		04/24/26	12.98	5/26	4592 INGRAM LIBRARY SERVICES		
CL 131970 69	-93444	BOOKS		04/27/26	46.43	5/26	4592 INGRAM LIBRARY SERVICES		
CL 131970 70	-93444	BOOKS		04/27/26	11.36	5/26	4592 INGRAM LIBRARY SERVICES		
CL 131970 71	-93444	BOOKS		04/27/26	13.67	5/26	4592 INGRAM LIBRARY SERVICES		
CL 131970 72	-93444	BOOKS		04/27/26	39.89	5/26	4592 INGRAM LIBRARY SERVICES		
CL 131970 73	-93444	BOOKS		04/27/26	62.88	5/26	4592 INGRAM LIBRARY SERVICES		
CL 131970 74	-93444	BOOKS		04/27/26	16.93	5/26	4592 INGRAM LIBRARY SERVICES		
CL 131970 75	-93444	BOOKS		04/27/26	14.73	5/26	4592 INGRAM LIBRARY SERVICES		
CL 131970 76	-93444	BOOKS		04/27/26	32.03	5/26	4592 INGRAM LIBRARY SERVICES		
CL 131970 77	-93444	BOOKS		04/27/26	20.58	5/26	4592 INGRAM LIBRARY SERVICES		
CL 131970 78	-93444	BOOKS		04/29/26	14.03	5/26	4592 INGRAM LIBRARY SERVICES		
CL 131970 79	-93444	BOOKS		04/29/26	15.72	5/26	4592 INGRAM LIBRARY SERVICES		
CL 131970 80	-93444	BOOKS		04/29/26	16.85	5/26	4592 INGRAM LIBRARY SERVICES		
CL 131970 81	-93444	BOOKS		04/29/26	36.30	5/26	4592 INGRAM LIBRARY SERVICES		
CL 131970 82	-93444	BOOKS		04/29/26	18.99	5/26	4592 INGRAM LIBRARY SERVICES		
CL 131970 83	-93444	BOOKS		04/29/26	49.57	5/26	4592 INGRAM LIBRARY SERVICES		
CL 131970 84	-93444	BOOKS		04/29/26	71.75	5/26	4592 INGRAM LIBRARY SERVICES		
CL 131970 85	-93444	BOOKS		04/29/26	26.55	5/26	4592 INGRAM LIBRARY SERVICES		
CL 131970 86	-93444	BOOKS		04/29/26	14.23	5/26	4592 INGRAM LIBRARY SERVICES		
CL 131970 87	-93444	BOOKS		04/29/26	32.54	5/26	4592 INGRAM LIBRARY SERVICES		
CL 131970 88	-93444	BOOKS		04/29/26	71.51	5/26	4592 INGRAM LIBRARY SERVICES		
CL 131970 89	-93444	BOOKS		04/29/26	36.39	5/26	4592 INGRAM LIBRARY SERVICES		

Funds 7000-7000, Accounts 411600-411600, AND ACCOUNT=411600

Fund/Account/ Doc/Line #	Check	Description	Invoice	Invoice Date	End Month/ Amount	Year to Date/ Period	Budget/ Vendor	Available Appropriation	%
7000 LIBRARY									
411600 LIBRARY									
CL 131970	90	-93444 BOOKS		04/29/26	19.09	5/26	4592 INGRAM LIBRARY SERVICES		
CL 131970	91	-93444 BOOKS		04/29/26	15.92	5/26	4592 INGRAM LIBRARY SERVICES		
CL 131970	92	-93444 BOOKS		04/29/26	33.24	5/26	4592 INGRAM LIBRARY SERVICES		
CL 131970	93	-93444 BOOKS		04/29/26	34.77	5/26	4592 INGRAM LIBRARY SERVICES		
CL 131970	94	-93444 BOOKS		/ /		5/26	4592 INGRAM LIBRARY SERVICES		
CL 132208	1	-93303 BOOKS		04/30/26	25.73	5/26	4592 INGRAM LIBRARY SERVICES		
CL 132208	2	-93303 BOOKS		04/30/26	48.00	5/26	4592 INGRAM LIBRARY SERVICES		
CL 132208	3	-93303 BOOKS		04/30/26	19.84	5/26	4592 INGRAM LIBRARY SERVICES		
CL 132208	4	-93303 BOOKS		04/30/26	22.50	5/26	4592 INGRAM LIBRARY SERVICES		
CL 132208	5	-93303 BOOKS		04/30/26	573.34	5/26	4592 INGRAM LIBRARY SERVICES		
CL 132208	6	-93303 BOOKS		04/30/26	16.28	5/26	4592 INGRAM LIBRARY SERVICES		
CL 132208	7	-93303 BOOKS		04/30/26	286.38	5/26	4592 INGRAM LIBRARY SERVICES		
CL 132208	8	-93303 BOOKS		05/01/26	35.43	5/26	4592 INGRAM LIBRARY SERVICES		
CL 132208	9	-93303 BOOKS		05/01/26	22.69	5/26	4592 INGRAM LIBRARY SERVICES		
CL 132208	10	-93303 BOOKS		05/05/26	41.91	5/26	4592 INGRAM LIBRARY SERVICES		
CL 132208	11	-93303 BOOKS		05/07/26	12.66	5/26	4592 INGRAM LIBRARY SERVICES		
CL 132208	12	-93303 BOOKS		05/07/26	13.71	5/26	4592 INGRAM LIBRARY SERVICES		
CL 132208	13	-93303 BOOKS		05/07/26	44.89	5/26	4592 INGRAM LIBRARY SERVICES		
CL 132208	14	-93303 BOOKS		05/07/26	25.81	5/26	4592 INGRAM LIBRARY SERVICES		
CL 132208	15	-93303 BOOKS		05/07/26	12.58	5/26	4592 INGRAM LIBRARY SERVICES		
CL 132208	16	-93303 BOOKS		05/07/26	87.68	5/26	4592 INGRAM LIBRARY SERVICES		
CL 132208	17	-93303 BOOKS		05/07/26	147.34	5/26	4592 INGRAM LIBRARY SERVICES		
CL 132208	18	-93303 BOOKS		05/07/26	306.08	5/26	4592 INGRAM LIBRARY SERVICES		
CL 132208	19	-93303 BOOKS		05/07/26	91.93	5/26	4592 INGRAM LIBRARY SERVICES		
CL 132208	20	-93303 BOOKS		05/07/26	168.62	5/26	4592 INGRAM LIBRARY SERVICES		
CL 132208	21	-93303 BOOKS		05/07/26	12.55	5/26	4592 INGRAM LIBRARY SERVICES		
CL 132208	22	-93303 BOOKS		05/07/26	262.02	5/26	4592 INGRAM LIBRARY SERVICES		
CL 132208	23	-93303 BOOKS		05/07/26	19.47	5/26	4592 INGRAM LIBRARY SERVICES		
CL 132208	24	-93303 BOOKS		05/07/26	17.97	5/26	4592 INGRAM LIBRARY SERVICES		
CL 132208	25	-93303 BOOKS		05/07/26	25.42	5/26	4592 INGRAM LIBRARY SERVICES		
CL 132208	26	-93303 BOOKS		05/08/26	20.07	5/26	4592 INGRAM LIBRARY SERVICES		
CL 132208	27	-93303 BOOKS		05/08/26	12.67	5/26	4592 INGRAM LIBRARY SERVICES		
CL 132208	28	-93303 BOOKS		05/08/26	14.14	5/26	4592 INGRAM LIBRARY SERVICES		
CL 132208	29	-93303 BOOKS		05/08/26	131.07	5/26	4592 INGRAM LIBRARY SERVICES		
CL 132208	30	-93303 BOOKS		05/08/26	525.45	5/26	4592 INGRAM LIBRARY SERVICES		
CL 132208	31	-93303 BOOKS		05/08/26	40.67	5/26	4592 INGRAM LIBRARY SERVICES		
CL 132208	32	-93303 BOOKS		05/08/26	44.17	5/26	4592 INGRAM LIBRARY SERVICES		
CL 132208	33	-93303 BOOKS		05/08/26	27.17	5/26	4592 INGRAM LIBRARY SERVICES		
CL 132208	34	-93303 BOOKS		05/08/26	110.01	5/26	4592 INGRAM LIBRARY SERVICES		
CL 132208	35	-93303 BOOKS		05/08/26	68.81	5/26	4592 INGRAM LIBRARY SERVICES		
CL 132208	36	-93303 BOOK CREDIT		04/09/26	-1.99	5/26	4592 INGRAM LIBRARY SERVICES		
CL 132214	1	-93299 BOOKS		05/13/26	488.67	5/26	1808 CHERRY LAKE PUBLISHING		
CL 132464	1	-93132 BOOKS		05/18/26	1,001.92	5/26	5553 FLUTTERBEE EDUCATION GROUP		
CL 132466	1	-93131 BOOKS		05/12/26	25.93	5/26	4592 INGRAM LIBRARY SERVICES		
CL 132466	2	-93131 BOOKS		05/12/26	22.11	5/26	4592 INGRAM LIBRARY SERVICES		
CL 132466	3	-93131 BOOKS		05/12/26	21.68	5/26	4592 INGRAM LIBRARY SERVICES		
CL 132466	4	-93131 BOOKS		05/12/26	19.29	5/26	4592 INGRAM LIBRARY SERVICES		
CL 132466	5	-93131 BOOKS		05/12/26	22.77	5/26	4592 INGRAM LIBRARY SERVICES		

Funds 7000-7000, Accounts 411600-411600, AND ACCOUNT=411600

Fund/Account/ Doc/Line #	Check	Description	Invoice Invoice	Date	End Month/ Amount	Year to Date/ Period	Budget/ Vendor	Available Appropriation	%
7000 LIBRARY									
411600 LIBRARY									
CL 132466	6	-93131 BOOKS		05/12/26	30.71	5/26	4592 INGRAM LIBRARY SERVICES		
CL 132466	7	-93131 BOOKS		05/12/26	21.72	5/26	4592 INGRAM LIBRARY SERVICES		
CL 132466	8	-93131 BOOKS		05/12/26	35.53	5/26	4592 INGRAM LIBRARY SERVICES		
CL 132466	9	-93131 BOOKS		05/12/26	65.19	5/26	4592 INGRAM LIBRARY SERVICES		
CL 132466	10	-93131 BOOKS		05/12/26	50.74	5/26	4592 INGRAM LIBRARY SERVICES		
CL 132466	11	-93131 BOOKS		05/12/26	23.31	5/26	4592 INGRAM LIBRARY SERVICES		
CL 132466	12	-93131 BOOKS		05/12/26	132.75	5/26	4592 INGRAM LIBRARY SERVICES		
CL 132466	13	-93131 BOOKS		05/12/26	11.71	5/26	4592 INGRAM LIBRARY SERVICES		
CL 132466	14	-93131 BOOKS		05/13/26	22.82	5/26	4592 INGRAM LIBRARY SERVICES		
CL 132466	15	-93131 BOOKS		05/13/26	37.47	5/26	4592 INGRAM LIBRARY SERVICES		
CL 132466	16	-93131 BOOKS		05/13/26	22.73	5/26	4592 INGRAM LIBRARY SERVICES		
CL 132466	17	-93131 BOOKS		05/13/26	27.14	5/26	4592 INGRAM LIBRARY SERVICES		
CL 132466	18	-93131 BOOKS		05/13/26	19.87	5/26	4592 INGRAM LIBRARY SERVICES		
CL 132466	19	-93131 BOOKS		05/13/26	19.02	5/26	4592 INGRAM LIBRARY SERVICES		
CL 132466	20	-93131 BOOKS		05/13/26	19.77	5/26	4592 INGRAM LIBRARY SERVICES		
CL 132466	21	-93131 BOOKS		05/13/26	15.24	5/26	4592 INGRAM LIBRARY SERVICES		
CL 132466	22	-93131 BOOKS		05/13/26	22.52	5/26	4592 INGRAM LIBRARY SERVICES		
CL 132466	23	-93131 BOOKS		05/13/26	21.59	5/26	4592 INGRAM LIBRARY SERVICES		
CL 132466	24	-93131 BOOKS		05/13/26	21.92	5/26	4592 INGRAM LIBRARY SERVICES		
CL 132466	25	-93131 BOOKS		05/14/26	33.99	5/26	4592 INGRAM LIBRARY SERVICES		
CL 132466	26	-93131 BOOKS		05/14/26	14.45	5/26	4592 INGRAM LIBRARY SERVICES		
CL 132466	27	-93131 BOOKS		05/14/26	19.48	5/26	4592 INGRAM LIBRARY SERVICES		
CL 132466	28	-93131 BOOKS		05/14/26	14.98	5/26	4592 INGRAM LIBRARY SERVICES		
CL 132466	29	-93131 BOOKS		05/14/26	45.74	5/26	4592 INGRAM LIBRARY SERVICES		
CL 132466	30	-93131 BOOKS		05/14/26	17.16	5/26	4592 INGRAM LIBRARY SERVICES		
CL 132466	31	-93131 BOOKS		05/14/26	20.63	5/26	4592 INGRAM LIBRARY SERVICES		
Object Total:					8,886.27	33,256.43	112,324.00	79,067.57	30%
663 MAGAZINES									
Object Total:					0.00	4,572.07	4,850.00	277.93	94%
664 AUDIO VIDEO									
CL 132206	1	-93304 DVD		04/28/26	63.24	5/26	1854 MIDWEST TAPE		
CL 132206	2	-93304 DVD		05/06/26	49.44	5/26	1854 MIDWEST TAPE		
CL 132206	3	-93304 DVD		05/06/26	163.29	5/26	1854 MIDWEST TAPE		
CL 132206	4	-93304 DVD		05/06/26	23.97	5/26	1854 MIDWEST TAPE		
CL 132206	5	-93304 DVD		05/06/26	42.28	5/26	1854 MIDWEST TAPE		
CL 132206	6	-93304 DVD		05/06/26	26.52	5/26	1854 MIDWEST TAPE		
CL 132455	1	-93138 DVD		05/13/26	134.10	5/26	1854 MIDWEST TAPE		
CL 132455	2	-93138 DVD		05/13/26	63.77	5/26	1854 MIDWEST TAPE		
CL 132455	3	-93138 DVD		05/13/26	45.69	5/26	1854 MIDWEST TAPE		
CL 132455	4	-93138 DVD		05/13/26	20.22	5/26	1854 MIDWEST TAPE		
CL 132455	5	-93138 DVD		05/20/26	119.85	5/26	1854 MIDWEST TAPE		
CL 132455	6	-93138 DVD		05/20/26	185.48	5/26	1854 MIDWEST TAPE		
CL 132455	7	-93138 DVD		05/20/26	23.97	5/26	1854 MIDWEST TAPE		
Object Total:					961.82	6,912.71	16,250.00	9,337.29	43%

Funds 7000-7000, Accounts 411600-411600, AND ACCOUNT=411600

Fund/Account/ Doc/Line # Check	Description	Invoice Invoice Date	End Month/ Amount	Year to Date/ Period	Budget/ Vendor	Available Appropriation	%
7000 LIBRARY							
411600 LIBRARY							
667 MEMBERSHIPS							
CC 2005 5	MEG MEMBERSHIP	1252 04/09/26	60.00	5/26	3162 VISA LIBRARY #2		
CC 2006 1	HEATHER MEMBERSHIP	25 04/17/26	215.00	5/26	4576 VISA LIBRARY #3		
CC 2006 4	LEXI MEMBERSHIPS	25 04/20/26	215.00	5/26	4576 VISA LIBRARY #3		
CC 2007 1	HEATHER MEMBERSHIP	1252 04/03/26	60.00	5/26	3161 VISA LIBRARY #1		
	Object Total:		550.00		2,144.00	4,320.00	2,176.00 50%
668 PRINTING (DO NOT USE)		/ /					
	Object Total:		0.00		0.00	0.00	0.00 %
669 INSURANCE		/ /					
	Object Total:		0.00		0.00	6,056.00	6,056.00 %
672 EMERGENCY MEDICAL SUPPLIES		/ /					
	Object Total:		0.00		108.72	0.00	-108.72 %
680 Library of Things		/ /					
	Object Total:		0.00		129.98	4,500.00	4,370.02 3%
689 PROMOTIONAL ACTIVITIES							
CC 2006 5	FACEBOOK	999999 04/30/26	72.97	5/26	4576 VISA LIBRARY #3		
	Object Total:		72.97		327.18	13,680.00	13,352.82 2%
710 PRINCIPAL		/ /					
	Object Total:		0.00		0.00	0.00	0.00 %
720 INTEREST		/ /					
	Object Total:		0.00		0.00	0.00	0.00 %
724 CONSULTING/TESTING FEES (DO NOT USE)		/ /					
	Object Total:		0.00		0.00	0.00	0.00 %
740 SERVICE CHARGES							
JV 6513 1	FIBT TSYS/TRANSFIRST May	/ /	138.00	5/26			
	Object Total:		138.00		699.95	1,750.00	1,050.05 40%
864 FURN & EQUIP DEPRECIATED >\$5,000		/ /					
	Object Total:		0.00		0.00	0.00	0.00 %
870 CAPITALIZED ASSETS - OVER \$5,000		/ /					
	Object Total:		0.00		0.00	0.00	0.00 %
880 COST ALLOCATIONS							
JV 6511 16	May 2026 Cost Allocation	/ /	4,454.42	5/26			
	Object Total:		4,454.42		22,272.10	53,450.00	31,177.90 42%

Funds 7000-7000, Accounts 411600-411600, AND ACCOUNT=411600

Fund/Account/ Doc/Line # Check	Description	Invoice Invoice Date	End Month/ Amount	Year to Date/ Period	Budget/ Vendor	Available Appropriation	%
7000 LIBRARY							
411600 LIBRARY							
890 TRANSFERS OUT		/ /					
	Object Total:		0.00	0.00	10,000.00	10,000.00	%
901 CATALOGING		/ /					
	Object Total:		0.00	0.00	3,210.00	3,210.00	%
994 ODIN		/ /					
	Object Total:		0.00	29,249.20	34,500.00	5,250.80	85%
	Account Total:		237,868.27	921,298.82	2,632,068.00	1,710,769.18	
	Fund Total:		237,868.27	921,298.82	2,632,068.00	1,710,769.18	

***Detail total may not match report total. The report total reflects the actual amount posting to the budget line. The detail includes all transactions that posted to the budget line during the period (including amounts that may have been closed).

Funds 7000-7000, Accounts 411600-411600, AND ACCOUNT=411600

Fund/Account/ Doc/Line #	Check	Description	Invoice Invoice Date	Invoice Date	End Month/ Amount	Year to Date/ Period	Budget/ Vendor	Available Appropriation	%		
7000 LI BRARY											
411600 LIBRARY											
110 PERMANENT EMP SALARIES											
JV 6522144		Payroll 06/12/2026	/	/	-1,153.75	6/26					
JV 6522145		Payroll 06/12/2026	/	/	49,194.73	6/26					
					Object Total:						
							48,040.98	516,543.32	1,315,880.00	799,336.68	39%
114 PART TIME SALARIES											
JV 6522146		Payroll 06/12/2026	/	/	3,086.36	6/26					
					Object Total:						
							3,086.36	37,644.37	134,448.00	96,803.63	28%
220 SOCIAL SECURITY											
JV 6522147		Payroll 06/12/2026	/	/	-88.26	6/26					
JV 6522148		Payroll 06/12/2026	/	/	3,816.98	6/26					
					Object Total:						
							3,728.72	40,614.65	110,686.00	70,071.35	37%
230 RETIREMENT											
JV 6522149		Payroll 06/12/2026	/	/	7,670.31	6/26					
					Object Total:						
							7,670.31	82,795.79	212,865.00	130,069.21	39%
240 WORKFORCE SAFETY INSURANCE											
					Object Total:						
							0.00	676.95	3,124.00	2,447.05	22%
245 CORPORATE EDUCATION (DO NOT USE)											
					Object Total:						
							0.00	0.00	0.00	0.00	%
250 UNEMPLOYMENT											
					Object Total:						
							0.00	0.00	500.00	500.00	%
312 ATTORNEY											
					Object Total:						
							0.00	0.00	5,150.00	5,150.00	%
320 HEALTH INSURANCE											
JV 6522150		Payroll 06/12/2026	/	/	8,602.32	6/26					
					Object Total:						
							8,602.32	80,516.87	195,241.00	114,724.13	41%
321 PROPERTY INSURANCE											
					Object Total:						
							0.00	1,468.42	0.00	-1,468.42	%
333 BUILDING RENTAL (DO NOT USE)											
					Object Total:						
							0.00	0.00	0.00	0.00	%
340 EMPLOYEE DEVELOPMENT											
CL 132617 1	-93042	MI LEAGE	05/20/26		13.08	6/26	5743	STEPHANI E VENJOHN			
CL 132899 1		MI LEAGE REIMBURSEMENT	04/30/26		14.52	6/26	5743	STEPHANI E VENJOHN			
CL 132899 2		MI LEAGE REIMBURSEMENT	06/19/26		13.08	6/26	5743	STEPHANI E VENJOHN			
CL 132900 1		CLIFTON STRENGTHS	06/08/26		600.00	6/26	525	VILLAGE FAMILY SERVICE			
					Object Total:						
							640.68	16,861.28	12,950.00	-3,911.28	130%
356 TELEPHONE											
CL 132857 31		may 2026 - library	05/08/26		188.56	6/26	3668	VERIZON WIRELESS			
					Object Total:						
							188.56	942.83	3,044.00	2,101.17	31%

Funds 7000-7000, Accounts 411600-411600, AND ACCOUNT=411600

Fund/Account/ Doc/Line # Check	Description	Invoice Invoice Date	Invoice Date	End Month/ Amount	Year to Date/ Period	Budget/ Vendor	Available Appropriation	%
7000 LI BRARY								
411600 LIBRARY								
360 PRINTING & MAILING PROJECTS								
CL 132898 1	MAILING ENVELOPES		06/05/26	635.95	6/26 2885	SHORTPRINTER		
			Object Total:	635.95	4,756.45	13,000.00	8,243.55	37%
387 MEDICAL/VACCINES			/ /					
			Object Total:	0.00	0.00	500.00	500.00	%
389 LEASE/RENTAL								
CL 132522 2	-93111 June 2026 Lease - Satellite Li		06/01/26	2,777.43	6/26 5229	AMB INVESTMENTS, LLC		
CL 132614 1	-93045 JUNE RENT		05/27/26	10,643.55	6/26 549	WF PUB SCHOOLS DIST #6		
			Object Total:	13,420.98	80,914.55	199,211.00	118,296.45	41%
399 RECRUITMENT/EMPLOYMENT TESTING			/ /					
			Object Total:	0.00	0.00	3,000.00	3,000.00	%
410 OFFICE SUPPLIES								
CC 2032 3	HAND & DISH SOAP	3490	05/19/26	16.66	6/26 3161	VISA LIBRARY #1		
CC 2032 4	CIRCULATION SUPPLIES	3490	05/19/26	88.04	6/26 3161	VISA LIBRARY #1		
CC 2032 15	PUREWATER TECHNOLOGY	999999	05/27/26	100.00	6/26 3161	VISA LIBRARY #1		
CC 2034 1	BARCODES INC	999999	05/27/26	88.36	6/26 4576	VISA LIBRARY #3		
CL 132618 1	118718 ADULT LIBRARY CARDS		05/21/26	2,442.47	6/26 2211	VANGUARD ID SYSTEMS		
CL 132618 2	118718 KID LIBRARY CARDS		05/21/26	120.00	6/26 2211	VANGUARD ID SYSTEMS		
CL 132724 1	-92983 PAPER TOWELS		06/05/26	54.42	6/26 351	BUSINESS ESSENTIALS		
CL 132724 2	-92983 PAPER		06/08/26	368.36	6/26 351	BUSINESS ESSENTIALS		
CL 132726 1	118658 DAILY RECORD CHECKING CARDS		05/29/26	16.57	6/26 77	DEMCO INC		
CL 132726 2	118658 COLOR-CODED PAPER TAPE		05/29/26	68.65	6/26 77	DEMCO INC		
CL 133077 2	CARD STOCK		06/30/26	125.60	6/26 3490	AMAZON CAPITAL SERVICES		
			Object Total:	3,489.13	4,952.91	15,750.00	10,797.09	31%
418 PROFESSIONAL SERVICES			/ /					
			Object Total:	0.00	0.00	3,000.00	3,000.00	%
420 OPERATION & MAINTENANCE			/ /					
			Object Total:	0.00	0.00	0.00	0.00	%
424 GAS AND OIL			/ /					
			Object Total:	0.00	83.23	2,000.00	1,916.77	4%
427 VEHICLES MAINTENANCE			/ /					
			Object Total:	0.00	0.00	1,200.00	1,200.00	%
428 SERVICE AGREEMENTS-CONTRACTS								
CL 132615 1	-93044 LEASE FOR PRINTERS		05/28/26	754.15	6/26 5349	MARCO TECHNOLOGIES, LLC		
CL 132727 1	-92981 POSTAGE CUBE LEASE		06/04/26	231.00	6/26 384	PITNEY BOWES GLOBAL		
			Object Total:	985.15	7,115.67	22,008.00	14,892.33	32%

Funds 7000-7000, Accounts 411600-411600, AND ACCOUNT=411600

Fund/Account/ Doc/Line # Check	Description	Invoice Invoice Date	Invoice Date	End Month/ Amount	Year to Date/ Period	Budget/ Vendor	Available Appropriation	%
7000 LI BRARY 411600 LI BRARY 490 MI SC			/ /					
		Object Total:		0.00	54.21	500.00	445.79	11%
497 TECHNOLOGY								
CL 132613 1 -93046	ANNUAL MAINTENANCE/SUBSCRIPTION	9/26-8/27	06/01/26	827.02	6/26	2089 ENVISIONWARE, INC		
CL 132902 1	LAPTOP		06/15/26	4,509.16	6/26	4767 LENOVO (UNITED STATES) INC.		
CL 132902 2	LAPTOP		06/15/26	6,098.44	6/26	4767 LENOVO (UNITED STATES) INC.		
CL 132902 3	LAPTOP		06/15/26	2,008.76	6/26	4767 LENOVO (UNITED STATES) INC.		
		Object Total:		13,443.38	25,792.24	37,379.00	11,586.76	69%
500 SUPPLIES			/ /					
		Object Total:		0.00	0.00	850.00	850.00	%
640 FURNITURE & EQUIPMENT (DO NOT USE)			/ /					
		Object Total:		0.00	0.00	0.00	0.00	%
641 FURN & EQUIP-NON DEPRECIATED <\$5000			/ /					
		Object Total:		0.00	1,551.00	11,520.00	9,969.00	13%
644 POSTAL METER RENT			/ /					
		Object Total:		0.00	0.00	2,772.00	2,772.00	%
648 PROFESSIONAL PUBLICATIONS			/ /					
		Object Total:		0.00	0.00	535.00	535.00	%
649 PROGRAMMING								
CC 2032 1	ADULT SERVICES SUPPLIES	3490	05/07/26	136.77	6/26	3161 VISA LIBRARY #1		
CC 2032 2	PAPER CUPS - AS	3490	05/19/26	19.99	6/26	3161 VISA LIBRARY #1		
CC 2032 5	ADULT SERVICES SUPPLIES	3490	05/19/26	17.53	6/26	3161 VISA LIBRARY #1		
CC 2032 6	YOUTH SERVICES SUPPLIES	3490	05/19/26	810.66	6/26	3161 VISA LIBRARY #1		
CC 2032 7	YOUTH SERVICES SUPPLIES	3490	05/19/26	31.98	6/26	3161 VISA LIBRARY #1		
CC 2032 8	YS - SBP EARLY LIT PRI ZES	3490	05/19/26	9.99	6/26	3161 VISA LIBRARY #1		
CC 2032 9	YS - SBP EARLY LIT PRI ZES	3490	05/19/26	167.54	6/26	3161 VISA LIBRARY #1		
CC 2032 11	YS - SBP EARLY LIT PRI ZES	3490	05/19/26	17.46	6/26	3161 VISA LIBRARY #1		
CC 2032 12	YS - SBP EARLY LIT PRI ZES	3490	05/19/26	20.89	6/26	3161 VISA LIBRARY #1		
CC 2032 13	REFUND	3490	05/26/26	-20.89	6/26	3161 VISA LIBRARY #1		
CC 2032 14	KICK-OFF PARTY SUPPLIES	4105	05/27/26	139.12	6/26	3161 VISA LIBRARY #1		
CC 2032 16	YS SUPPLY-STAPLERS	3490	05/19/26	14.46	6/26	3161 VISA LIBRARY #1		
CC 2032 18	ADULT SERVICES - DICE TRAY	3490	05/29/26	17.99	6/26	3161 VISA LIBRARY #1		
CL 132723 1 -92950	ADULT SERVICES - COFFEE CUPS		06/09/26	16.15	6/26	3490 AMAZON CAPITAL SERVICES		
CL 132901 1	DISPOSABLE COFFEE CUPS		06/22/26	101.47	6/26	3490 AMAZON CAPITAL SERVICES		
CL 132901 2	SUGAR/SWEETNER/TY		06/23/26	28.15	6/26	3490 AMAZON CAPITAL SERVICES		

Funds 7000-7000, Accounts 411600-411600, AND ACCOUNT=411600

Fund/Account/ Doc/Line #	Check	Description	Invoice Invoice Date	End Month/ Amount	Year to Date/ Period	Budget/ Vendor	Available Appropriation	%
7000 LI BRARY								
411600 LIBRARY								
CL 133077	1	STICKERS COFFEE CREAMER - AS SUPPLIES	06/24/26	34.99	6/26	3490 AMAZON CAPITAL	SERVICES	
Object Total:				1,564.25	3,145.26	16,000.00	12,854.74	20%
650 E RESOURCES								
CL 132616	1	-93043 EBOOK	05/26/26	505.97	6/26	2126 OVERDRIVE, INC		
CL 132616	2	-93043 AUDIOBOOK	05/26/26	984.88	6/26	2126 OVERDRIVE, INC		
CL 132896	1	EBOOK	06/11/26	543.94	6/26	2126 OVERDRIVE, INC		
CL 132896	2	AUDIOBOOKS	06/11/26	1,393.60	6/26	2126 OVERDRIVE, INC		
Object Total:				3,428.39	24,121.64	44,065.00	19,943.36	55%
653 CAPITAL IMPROVEMENTS								
Object Total:				0.00	0.00	0.00	0.00	%
661 POSTAGE/FREIGHT/SHIPPING								
Object Total:				0.00	0.00	0.00	0.00	%
662 BOOKS								
CL 132612	1	118644 BOOKS	06/04/26	1,449.35	6/26	3160 APPLE BOOKS		
CL 132648	1	-93023 BOOKS	05/19/26	20.31	6/26	4592 INGRAM LIBRARY	SERVICES	
CL 132648	2	-93023 BOOKS	05/19/26	15.67	6/26	4592 INGRAM LIBRARY	SERVICES	
CL 132648	3	-93023 BOOKS	05/19/26	13.11	6/26	4592 INGRAM LIBRARY	SERVICES	
CL 132648	4	-93023 BOOKS	05/19/26	13.01	6/26	4592 INGRAM LIBRARY	SERVICES	
CL 132648	5	-93023 BOOKS	05/19/26	93.88	6/26	4592 INGRAM LIBRARY	SERVICES	
CL 132648	6	-93023 BOOKS	05/19/26	19.29	6/26	4592 INGRAM LIBRARY	SERVICES	
CL 132648	7	-93023 BOOKS	05/19/26	23.26	6/26	4592 INGRAM LIBRARY	SERVICES	
CL 132648	8	-93023 BOOKS	05/19/26	25.24	6/26	4592 INGRAM LIBRARY	SERVICES	
CL 132648	9	-93023 BOOKS	05/19/26	28.83	6/26	4592 INGRAM LIBRARY	SERVICES	
CL 132648	10	-93023 BOOKS	05/19/26	8.16	6/26	4592 INGRAM LIBRARY	SERVICES	
CL 132648	11	-93023 BOOKS	05/19/26	22.21	6/26	4592 INGRAM LIBRARY	SERVICES	
CL 132648	12	-93023 BOOKS	05/19/26	51.88	6/26	4592 INGRAM LIBRARY	SERVICES	
CL 132648	13	-93023 BOOKS	05/19/26	88.82	6/26	4592 INGRAM LIBRARY	SERVICES	
CL 132648	14	-93023 BOOKS	05/19/26	10.94	6/26	4592 INGRAM LIBRARY	SERVICES	
CL 132648	15	-93023 BOOKS	05/19/26	26.45	6/26	4592 INGRAM LIBRARY	SERVICES	
CL 132648	16	-93023 BOOKS	05/19/26	15.13	6/26	4592 INGRAM LIBRARY	SERVICES	
CL 132648	17	-93023 BOOKS	05/19/26	130.23	6/26	4592 INGRAM LIBRARY	SERVICES	
CL 132648	18	-93023 BOOKS	05/19/26	19.56	6/26	4592 INGRAM LIBRARY	SERVICES	
CL 132648	19	-93023 BOOKS	05/19/26	55.95	6/26	4592 INGRAM LIBRARY	SERVICES	
CL 132648	20	-93023 BOOKS	05/19/26	27.82	6/26	4592 INGRAM LIBRARY	SERVICES	
CL 132648	21	-93023 BOOKS	05/19/26	102.67	6/26	4592 INGRAM LIBRARY	SERVICES	
CL 132648	22	-93023 BOOKS	05/19/26	23.79	6/26	4592 INGRAM LIBRARY	SERVICES	
CL 132648	23	-93023 BOOKS	05/19/26	46.45	6/26	4592 INGRAM LIBRARY	SERVICES	
CL 132648	24	-93023 BOOKS	05/21/26	39.37	6/26	4592 INGRAM LIBRARY	SERVICES	
CL 132648	25	-93023 BOOKS	05/21/26	39.33	6/26	4592 INGRAM LIBRARY	SERVICES	
CL 132648	26	-93023 BOOKS	05/21/26	18.20	6/26	4592 INGRAM LIBRARY	SERVICES	
CL 132648	27	-93023 BOOKS	05/21/26	21.03	6/26	4592 INGRAM LIBRARY	SERVICES	
CL 132648	28	-93023 BOOKS	05/21/26	42.79	6/26	4592 INGRAM LIBRARY	SERVICES	
CL 132648	29	-93023 BOOKS	05/21/26	28.78	6/26	4592 INGRAM LIBRARY	SERVICES	
CL 132648	30	-93023 BOOKS	05/22/26	36.02	6/26	4592 INGRAM LIBRARY	SERVICES	

Funds 7000-7000, Accounts 411600-411600, AND ACCOUNT=411600

Fund/Account/ Doc/Line #	Check	Description	Invoice Invoice Date	End Month/ Amount	Year to Date/ Period	Budget/ Vendor	Available Appropriation	%
7000 LI BRARY								
411600 LI BRARY								
CL 132648 31	-93023	BOOKS	05/22/26	27.59	6/26	4592 INGRAM LI BRARY	SERVI CES	
CL 132648 32	-93023	BOOKS	05/22/26	62.51	6/26	4592 INGRAM LI BRARY	SERVI CES	
CL 132648 33	-93023	BOOKS	05/22/26	22.12	6/26	4592 INGRAM LI BRARY	SERVI CES	
CL 132648 34	-93023	BOOKS	05/22/26	28.34	6/26	4592 INGRAM LI BRARY	SERVI CES	
CL 132648 35	-93023	BOOKS	05/22/26	28.73	6/26	4592 INGRAM LI BRARY	SERVI CES	
CL 132648 36	-93023	BOOKS	05/22/26	50.07	6/26	4592 INGRAM LI BRARY	SERVI CES	
CL 132648 37	-93023	BOOKS	05/22/26	12.21	6/26	4592 INGRAM LI BRARY	SERVI CES	
CL 132648 38	-93023	BOOKS	05/22/26	83.62	6/26	4592 INGRAM LI BRARY	SERVI CES	
CL 132648 39	-93023	BOOKS	05/26/26	13.91	6/26	4592 INGRAM LI BRARY	SERVI CES	
CL 132648 40	-93023	BOOKS	05/26/26	14.50	6/26	4592 INGRAM LI BRARY	SERVI CES	
CL 132648 41	-93023	BOOKS	05/26/26	11.80	6/26	4592 INGRAM LI BRARY	SERVI CES	
CL 132648 42	-93023	BOOKS	05/26/26	62.78	6/26	4592 INGRAM LI BRARY	SERVI CES	
CL 132648 43	-93023	BOOKS	05/26/26	125.12	6/26	4592 INGRAM LI BRARY	SERVI CES	
CL 132648 44	-93023	BOOKS	05/26/26	48.07	6/26	4592 INGRAM LI BRARY	SERVI CES	
CL 132648 45	-93023	BOOKS	05/26/26	189.77	6/26	4592 INGRAM LI BRARY	SERVI CES	
CL 132648 46	-93023	BOOKS	05/26/26	12.37	6/26	4592 INGRAM LI BRARY	SERVI CES	
CL 132648 47	-93023	BOOKS	05/26/26	18.72	6/26	4592 INGRAM LI BRARY	SERVI CES	
CL 132648 48	-93023	BOOKS	05/27/26	81.83	6/26	4592 INGRAM LI BRARY	SERVI CES	
CL 132648 49	-93023	BOOKS	05/27/26	118.55	6/26	4592 INGRAM LI BRARY	SERVI CES	
CL 132648 50	-93023	BOOKS	05/27/26	62.94	6/26	4592 INGRAM LI BRARY	SERVI CES	
CL 132648 51	-93023	BOOKS	05/28/26	14.10	6/26	4592 INGRAM LI BRARY	SERVI CES	
CL 132648 52	-93023	BOOKS	05/28/26	60.92	6/26	4592 INGRAM LI BRARY	SERVI CES	
CL 132648 53	-93023	BOOKS	05/28/26	12.68	6/26	4592 INGRAM LI BRARY	SERVI CES	
CL 132648 54	-93023	BOOKS	05/28/26	21.78	6/26	4592 INGRAM LI BRARY	SERVI CES	
CL 132648 55	-93023	BOOKS	05/28/26	177.26	6/26	4592 INGRAM LI BRARY	SERVI CES	
CL 132648 56	-93023	BOOKS	05/28/26	251.13	6/26	4592 INGRAM LI BRARY	SERVI CES	
CL 132648 57	-93023	BOOKS	05/28/26	75.54	6/26	4592 INGRAM LI BRARY	SERVI CES	
CL 132648 58	-93023	BOOKS	05/29/26	17.42	6/26	4592 INGRAM LI BRARY	SERVI CES	
CL 132648 59	-93023	BOOKS	05/29/26	30.59	6/26	4592 INGRAM LI BRARY	SERVI CES	
CL 132648 60	-93023	BOOKS	05/29/26	30.73	6/26	4592 INGRAM LI BRARY	SERVI CES	
CL 132648 61	-93023	BOOKS	05/29/26	17.18	6/26	4592 INGRAM LI BRARY	SERVI CES	
CL 132648 62	-93023	BOOKS	06/03/26	15.07	6/26	4592 INGRAM LI BRARY	SERVI CES	
CL 132648 63	-93023	BOOKS	06/03/26	13.72	6/26	4592 INGRAM LI BRARY	SERVI CES	
CL 132648 64	-93023	BOOKS	06/03/26	15.37	6/26	4592 INGRAM LI BRARY	SERVI CES	
CL 132648 65	-93023	BOOKS	06/03/26	89.45	6/26	4592 INGRAM LI BRARY	SERVI CES	
CL 132648 66	-93023	BOOKS	06/03/26	17.09	6/26	4592 INGRAM LI BRARY	SERVI CES	
CL 132648 67	-93023	BOOKS	06/04/26	16.52	6/26	4592 INGRAM LI BRARY	SERVI CES	
CL 132648 68	-93023	BOOKS	06/04/26	20.16	6/26	4592 INGRAM LI BRARY	SERVI CES	
CL 132648 69	-93023	BOOKS	06/04/26	18.34	6/26	4592 INGRAM LI BRARY	SERVI CES	
CL 132648 70	-93023	BOOKS	06/04/26	19.82	6/26	4592 INGRAM LI BRARY	SERVI CES	
CL 132648 71	-93023	BOOKS	06/04/26	64.28	6/26	4592 INGRAM LI BRARY	SERVI CES	
CL 132648 72	-93023	BOOKS	06/04/26	33.11	6/26	4592 INGRAM LI BRARY	SERVI CES	
CL 132648 73	-93023	BOOKS	06/04/26	174.19	6/26	4592 INGRAM LI BRARY	SERVI CES	
CL 132648 74	-93023	BOOKS	06/04/26	31.78	6/26	4592 INGRAM LI BRARY	SERVI CES	
CL 132648 75	-93023	BOOKS	05/28/26	371.31	6/26	4592 INGRAM LI BRARY	SERVI CES	
CL 132648 76	-93023	BOOKS	06/02/26	26.00	6/26	4592 INGRAM LI BRARY	SERVI CES	
CL 132648 77	-93023	BOOKS	06/02/26	38.97	6/26	4592 INGRAM LI BRARY	SERVI CES	
CL 132648 78	-93023	BOOKS	06/02/26	30.31	6/26	4592 INGRAM LI BRARY	SERVI CES	

Funds 7000-7000, Accounts 411600-411600, AND ACCOUNT=411600

Fund/Account/ Doc/Line #	Check	Description	Invoice Invoice Date	End Month/ Amount	Year to Date/ Period	Budget/ Vendor	Available Appropriation	%
7000 LI BRARY								
411600 LI BRARY								
CL 132648 79	-93023	BOOKS	06/02/26	68.44	6/26	4592 INGRAM LI BRARY	SERVI CES	
CL 132648 80	-93023	BOOKS	06/09/26	24.45	6/26	4592 INGRAM LI BRARY	SERVI CES	
CL 132648 81	-93023	BOOKS	06/09/26	18.10	6/26	4592 INGRAM LI BRARY	SERVI CES	
CL 132648 82	-93023	BOOKS	06/09/26	17.77	6/26	4592 INGRAM LI BRARY	SERVI CES	
CL 132648 83	-93023	BOOKS	06/09/26	14.38	6/26	4592 INGRAM LI BRARY	SERVI CES	
CL 132648 84	-93023	BOOKS	06/09/26	14.26	6/26	4592 INGRAM LI BRARY	SERVI CES	
CL 132648 85	-93023	BOOKS	06/09/26	43.28	6/26	4592 INGRAM LI BRARY	SERVI CES	
CL 132648 86	-93023	BOOKS	06/09/26	27.57	6/26	4592 INGRAM LI BRARY	SERVI CES	
CL 132648 87	-93023	BOOKS	06/09/26	16.42	6/26	4592 INGRAM LI BRARY	SERVI CES	
CL 132648 88	-93023	BOOKS	06/09/26	54.25	6/26	4592 INGRAM LI BRARY	SERVI CES	
CL 132648 89	-93023	BOOKS	06/09/26	38.05	6/26	4592 INGRAM LI BRARY	SERVI CES	
CL 132648 90	-93023	BOOKS	06/09/26	7.72	6/26	4592 INGRAM LI BRARY	SERVI CES	
CL 132648 91	-93023	BOOKS	06/10/26	17.20	6/26	4592 INGRAM LI BRARY	SERVI CES	
CL 132648 92	-93023	BOOKS	06/10/26	16.77	6/26	4592 INGRAM LI BRARY	SERVI CES	
CL 132648 93	-93023	BOOKS	06/10/26	16.94	6/26	4592 INGRAM LI BRARY	SERVI CES	
CL 132648 94	-93023	BOOKS	06/10/26	14.45	6/26	4592 INGRAM LI BRARY	SERVI CES	
CL 132648 95	-93023	BOOKS	06/10/26	13.64	6/26	4592 INGRAM LI BRARY	SERVI CES	
CL 132648 96	-93023	BOOKS	06/10/26	15.60	6/26	4592 INGRAM LI BRARY	SERVI CES	
CL 132648 97	-93023	BOOKS	06/10/26	18.80	6/26	4592 INGRAM LI BRARY	SERVI CES	
CL 132648 98	-93023	BOOKS	06/10/26	44.70	6/26	4592 INGRAM LI BRARY	SERVI CES	
CL 132648 99	-93023	BOOKS	06/10/26	25.87	6/26	4592 INGRAM LI BRARY	SERVI CES	
CL 132648100	-93023	BOOKS	06/10/26	13.68	6/26	4592 INGRAM LI BRARY	SERVI CES	
CL 132648101	-93023	BOOKS	06/10/26	98.26	6/26	4592 INGRAM LI BRARY	SERVI CES	
CL 132725 1	-92982	BOOKS	06/10/26	22.45	6/26	1808 CHERRY LAKE PUBLI SHING		
CL 132905 1		BOOKS	06/05/26	15.34	6/26	4592 INGRAM LI BRARY	SERVI CES	
CL 132905 2		BOOKS	06/05/26	22.23	6/26	4592 INGRAM LI BRARY	SERVI CES	
CL 132905 3		BOOKS	06/05/26	15.75	6/26	4592 INGRAM LI BRARY	SERVI CES	
CL 132905 4		BOOKS	06/05/26	12.88	6/26	4592 INGRAM LI BRARY	SERVI CES	
CL 132905 5		BOOKS	06/05/26	13.25	6/26	4592 INGRAM LI BRARY	SERVI CES	
CL 132905 6		BOOKS	06/11/26	16.73	6/26	4592 INGRAM LI BRARY	SERVI CES	
CL 132905 7		BOOKS	06/11/26	33.65	6/26	4592 INGRAM LI BRARY	SERVI CES	
CL 132905 8		BOOKS	06/11/26	14.04	6/26	4592 INGRAM LI BRARY	SERVI CES	
CL 132905 9		BOOKS	06/11/26	44.92	6/26	4592 INGRAM LI BRARY	SERVI CES	
CL 132905 10		BOOKS	06/11/26	42.23	6/26	4592 INGRAM LI BRARY	SERVI CES	
CL 132905 11		BOOKS	06/11/26	27.36	6/26	4592 INGRAM LI BRARY	SERVI CES	
CL 132905 12		BOOKS	06/11/26	20.00	6/26	4592 INGRAM LI BRARY	SERVI CES	
CL 132905 13		BOOKS	06/11/26	13.19	6/26	4592 INGRAM LI BRARY	SERVI CES	
CL 132905 14		BOOKS	06/11/26	23.06	6/26	4592 INGRAM LI BRARY	SERVI CES	
CL 132905 15		BOOKS	06/11/26	12.45	6/26	4592 INGRAM LI BRARY	SERVI CES	
CL 132905 16		BOOKS	06/11/26	454.81	6/26	4592 INGRAM LI BRARY	SERVI CES	
CL 132905 17		BOOKS	06/11/26	92.93	6/26	4592 INGRAM LI BRARY	SERVI CES	
CL 132905 18		BOOKS	06/11/26	444.74	6/26	4592 INGRAM LI BRARY	SERVI CES	
CL 132905 19		BOOKS	06/11/26	323.55	6/26	4592 INGRAM LI BRARY	SERVI CES	
CL 132905 20		BOOKS	06/11/26	603.36	6/26	4592 INGRAM LI BRARY	SERVI CES	
CL 132905 21		BOOKS	06/11/26	20.86	6/26	4592 INGRAM LI BRARY	SERVI CES	
CL 132905 22		BOOKS	06/11/26	15.77	6/26	4592 INGRAM LI BRARY	SERVI CES	
CL 132905 23		BOOKS	06/11/26	83.59	6/26	4592 INGRAM LI BRARY	SERVI CES	
CL 132905 24		BOOKS	06/12/26	14.41	6/26	4592 INGRAM LI BRARY	SERVI CES	

Funds 7000-7000, Accounts 411600-411600, AND ACCOUNT=411600

Fund/Account/ Doc/Line #	Check	Description	Invoice Invoice Date	End Month/ Amount	Year to Date/ Period	Budget/ Vendor	Available Appropriation	%
7000 LI BRARY								
411600 LI BRARY								
CL 132905 25		BOOKS	06/12/26	60.28	6/26	4592 INGRAM LI BRARY	SERVI CES	
CL 132905 26		BOOKS	06/12/26	71.96	6/26	4592 INGRAM LI BRARY	SERVI CES	
CL 132905 27		BOOKS	06/12/26	16.38	6/26	4592 INGRAM LI BRARY	SERVI CES	
CL 132905 28		BOOKS	06/12/26	23.03	6/26	4592 INGRAM LI BRARY	SERVI CES	
CL 132905 29		BOOKS	06/12/26	20.21	6/26	4592 INGRAM LI BRARY	SERVI CES	
CL 132905 30		BOOKS	06/12/26	29.38	6/26	4592 INGRAM LI BRARY	SERVI CES	
CL 132905 31		BOOKS	06/15/26	38.65	6/26	4592 INGRAM LI BRARY	SERVI CES	
CL 132905 32		BOOKS	06/15/26	22.13	6/26	4592 INGRAM LI BRARY	SERVI CES	
CL 132905 33		BOOKS	06/15/26	13.94	6/26	4592 INGRAM LI BRARY	SERVI CES	
CL 132905 34		BOOKS	06/15/26	13.13	6/26	4592 INGRAM LI BRARY	SERVI CES	
CL 132905 35		BOOKS	06/15/26	854.62	6/26	4592 INGRAM LI BRARY	SERVI CES	
CL 132905 36		BOOKS	06/16/26	17.32	6/26	4592 INGRAM LI BRARY	SERVI CES	
CL 132905 37		BOOKS	06/16/26	15.65	6/26	4592 INGRAM LI BRARY	SERVI CES	
CL 132905 38		BOOKS	06/16/26	18.69	6/26	4592 INGRAM LI BRARY	SERVI CES	
CL 132905 39		BOOKS	06/16/26	22.47	6/26	4592 INGRAM LI BRARY	SERVI CES	
CL 132905 40		BOOKS	06/16/26	21.33	6/26	4592 INGRAM LI BRARY	SERVI CES	
CL 132905 41		BOOKS	09/16/26	48.06	6/26	4592 INGRAM LI BRARY	SERVI CES	
CL 132905 42		BOOKS	06/17/26	54.14	6/26	4592 INGRAM LI BRARY	SERVI CES	
CL 132905 43		BOOKS	06/17/26	68.36	6/26	4592 INGRAM LI BRARY	SERVI CES	
CL 132905 44		BOOKS	06/17/26	121.67	6/26	4592 INGRAM LI BRARY	SERVI CES	
CL 132905 45		BOOKS	06/17/26	82.27	6/26	4592 INGRAM LI BRARY	SERVI CES	
CL 132905 46		BOOKS	06/17/26	358.93	6/26	4592 INGRAM LI BRARY	SERVI CES	
CL 132905 47		BOOKS	06/17/26	142.02	6/26	4592 INGRAM LI BRARY	SERVI CES	
CL 132905 48		BOOKS	06/18/26	14.08	6/26	4592 INGRAM LI BRARY	SERVI CES	
CL 132905 49		BOOKS	06/18/26	16.60	6/26	4592 INGRAM LI BRARY	SERVI CES	
CL 132905 50		BOOKS	06/18/26	19.45	6/26	4592 INGRAM LI BRARY	SERVI CES	
CL 132905 51		BOOKS	06/18/26	33.65	6/26	4592 INGRAM LI BRARY	SERVI CES	
CL 132905 52		BOOKS	06/18/26	28.61	6/26	4592 INGRAM LI BRARY	SERVI CES	
CL 132905 53		BOOKS	06/18/26	59.53	6/26	4592 INGRAM LI BRARY	SERVI CES	
CL 132905 54		BOOKS	06/18/26	12.26	6/26	4592 INGRAM LI BRARY	SERVI CES	
CL 132905 55		BOOKS	06/18/26	20.68	6/26	4592 INGRAM LI BRARY	SERVI CES	
CL 132905 56		BOOKS	06/18/26	20.34	6/26	4592 INGRAM LI BRARY	SERVI CES	
CL 132905 57		BOOKS	06/18/26	13.87	6/26	4592 INGRAM LI BRARY	SERVI CES	
CL 132905 58		BOOKS	06/18/26	30.19	6/26	4592 INGRAM LI BRARY	SERVI CES	
CL 132905 59		BOOKS	06/18/26	40.46	6/26	4592 INGRAM LI BRARY	SERVI CES	
CL 132905 60		BOOKS	06/18/26	14.20	6/26	4592 INGRAM LI BRARY	SERVI CES	
CL 132905 61		BOOKS	06/18/26	38.59	6/26	4592 INGRAM LI BRARY	SERVI CES	
CL 132905 62		BOOKS	06/18/26	32.66	6/26	4592 INGRAM LI BRARY	SERVI CES	
CL 132905 63		BOOKS	06/18/26	13.62	6/26	4592 INGRAM LI BRARY	SERVI CES	
CL 132905 64		BOOKS	06/18/26	11.69	6/26	4592 INGRAM LI BRARY	SERVI CES	
CL 132905 65		BOOKS	06/18/26	13.28	6/26	4592 INGRAM LI BRARY	SERVI CES	
Object Total:				10,950.43	44,206.86	112,324.00	68,117.14	39%
663 MAGAZI NES			/ /					
Object Total:				0.00	4,572.07	4,850.00	277.93	94%

Funds 7000-7000, Accounts 411600-411600, AND ACCOUNT=411600

Fund/Account/ Doc/Line #	Check	Description	Invoice Invoice	Date	End Month/ Amount	Year to Date/ Period	Budget/ Vendor	Available Appropriation	%
7000 LI BRARY									
411600 LI BRARY									
664 AUDIO VIDEO									
CC 2032 10		DVD	3490	05/04/26	9.93	6/26	3161 VISA LIBRARY #1		
CC 2032 17		DVD	3490	05/28/26	17.66	6/26	3161 VISA LIBRARY #1		
CL 132646 1	-93024	DVD		05/27/26	75.71	6/26	1854 MI DWEST TAPE		
CL 132646 2	-93024	DVD		06/02/26	33.01	6/26	1854 MI DWEST TAPE		
CL 132646 3	-93024	DVD		06/02/26	30.72	6/26	1854 MI DWEST TAPE		
CL 132646 4	-93024	DVD		06/09/26	27.72	6/26	1854 MI DWEST TAPE		
CL 132646 5	-93024	DVD		06/09/26	65.32	6/26	1854 MI DWEST TAPE		
CL 132646 6	-93024	DVD		06/09/26	20.22	6/26	1854 MI DWEST TAPE		
CL 132646 7	-93024	DVD		06/09/26	225.48	6/26	1854 MI DWEST TAPE		
CL 132646 8	-93024	DVD		06/09/26	31.51	6/26	1854 MI DWEST TAPE		
CL 132646 9	-93024	DVD		06/09/26	20.22	6/26	1854 MI DWEST TAPE		
CL 132646 10	-93024	DVD		06/09/26	31.51	6/26	1854 MI DWEST TAPE		
CL 132646 11	-93024	DVD		06/09/26	67.42	6/26	1854 MI DWEST TAPE		
CL 132903 1		DVD		06/17/26	114.94	6/26	1854 MI DWEST TAPE		
CL 132903 2		DVD		06/17/26	53.27	6/26	1854 MI DWEST TAPE		
CL 132903 3		DVD		06/17/26	126.48	6/26	1854 MI DWEST TAPE		
CL 133079 1		DVD		06/24/26	65.16	6/26	1854 MI DWEST TAPE		
CL 133079 2		DVD		06/24/26	28.47	6/26	1854 MI DWEST TAPE		
CL 133079 3		DVD		06/24/26	31.51	6/26	1854 MI DWEST TAPE		
		Object Total:			1,076.26	7,988.97	16,250.00	8,261.03	49%
667 MEMBERSHI PS									
CC 2033 3		STEPH VENJOHN MEMBERSHI P	25	05/22/26	215.00	6/26	3162 VISA LIBRARY #2		
CC 2034 2		STEPH VENJOHN MEMBERSHI P	1252	05/09/26	60.00	6/26	4576 VISA LIBRARY #3		
		Object Total:			275.00	2,419.00	4,320.00	1,901.00	56%
668 PRINTING (DO NOT USE)									
		Object Total:		/ /	0.00	0.00	0.00	0.00	%
669 INSURANCE									
		Object Total:		/ /	0.00	0.00	6,056.00	6,056.00	%
672 EMERGENCY MEDICAL SUPPLIES									
CL 133078 1		MEDI CAL SUPPLI ES-FI RST AID KIT		06/26/26	107.24	6/26	756 NELCO FI RST AID		
		Object Total:			107.24	215.96	0.00	-215.96	%
680 Li brary of Thi ngs									
		Object Total:		/ /	0.00	129.98	4,500.00	4,370.02	3%
689 PROMOTI ONAL ACTI VI TI ES									
CC 2032 19		SUMMER MAGAZI NES	999999	06/01/26	552.76	6/26	3161 VISA LIBRARY #1		
CC 2032 20		LANYARDS -SB PRI ZE	3490	06/01/26	35.99	6/26	3161 VISA LI BRARY #1		
CC 2033 1		STAFF T-SHI RTS	4887	05/19/26	370.62	6/26	3162 VISA LI BRARY #2		
CC 2033 2		STAFF T-SHI RTS	4887	05/19/26	72.08	6/26	3162 VISA LI BRARY #2		
CC 2034 3		DIGI TAL ADVERTI SI NG	999999	05/31/26	104.56	6/26	4576 VISA LI BRARY #3		
CL 132895 1		SPRI NG 2026 LI BRARY DIGI TAL		05/31/26	300.00	6/26	104 FORUM COMMUNI CATI ONS		

Funds 7000-7000, Accounts 411600-411600, AND ACCOUNT=411600

Fund/Account/ Doc/Line # Check	Description	Invoice Invoice Date	End Month/ Amount	Year to Date/ Period	Budget/ Vendor	Available Appropriation	%
7000 LI BRARY 411600 LIBRARY CL 132895 2	SUMMER FUN 2026 MAGAZINE	05/31/26	799.00	6/26	104 FORUM COMMUNI CATIONS		
	Object Total:		2,235.01	2,562.19	13,680.00	11,117.81	19%
710 PRINCIPAL		/ /					
	Object Total:		0.00	0.00	0.00	0.00	%
720 INTEREST		/ /					
	Object Total:		0.00	0.00	0.00	0.00	%
724 CONSULTING/TESTING FEES (DO NOT USE)		/ /					
	Object Total:		0.00	0.00	0.00	0.00	%
740 SERVICE CHARGES		/ /					
	Object Total:		0.00	699.95	1,750.00	1,050.05	40%
864 FURN & EQUIP DEPRECIATED >\$5,000		/ /					
	Object Total:		0.00	0.00	0.00	0.00	%
870 CAPITALIZED ASSETS - OVER \$5,000		/ /					
	Object Total:		0.00	0.00	0.00	0.00	%
880 COST ALLOCATIONS JV 6510 16	April 2026 Cost Allocation	/ /	4,454.42	6/26			
	Object Total:		4,454.42	26,726.52	53,450.00	26,723.48	50%
890 TRANSFERS OUT		/ /					
	Object Total:		0.00	0.00	10,000.00	10,000.00	%
901 CATALOGING		/ /					
	Object Total:		0.00	0.00	3,210.00	3,210.00	%
994 ODIN		/ /					
	Object Total:		0.00	29,249.20	34,500.00	5,250.80	85%
	Account Total:		128,023.52	1,049,322.34	2,632,068.00	1,582,745.66	
	Fund Total:		128,023.52	1,049,322.34	2,632,068.00	1,582,745.66	

***Detail total may not match report total. The report total reflects the actual amount posting to the budget line. The detail includes all transactions that posted to the budget line during the period (including amounts that may have been closed).

Combined Funds

		----- Current Year -----				
Account Object	Description	Current Month	Current YTD	Budget	Variance	%
Revenue						
310001	PROPERTY TAXES	7,082.13	1,933,861.15	2,544,185.00	-610,323.85	76
310002	DISCOUNT PROPERTY TAXES			-106,856.00	106,856.00	
335600	STATE AID	44,134.69	44,134.69	44,626.00	-491.31	99
						80
	Total Revenue	51,216.82	1,977,995.84	2,481,955.00	-503,959.16	80
Expenses						
411600	LIBRARY					
110	PERMANENT EMP SALARIES	48,040.98	516,543.32	1,315,880.00	799,336.68	39
114	PART TIME SALARIES	3,086.36	37,644.37	134,448.00	96,803.63	28
220	SOCIAL SECURITY	3,728.72	40,614.65	110,686.00	70,071.35	37
230	RETIREMENT	7,670.31	82,795.79	212,865.00	130,069.21	39
240	WORKFORCE SAFETY INSURANCE		676.95	3,124.00	2,447.05	22
250	UNEMPLOYMENT			500.00	500.00	
312	ATTORNEY			5,150.00	5,150.00	
320	HEALTH INSURANCE	8,602.32	80,516.87	195,241.00	114,724.13	41
321	PROPERTY INSURANCE		1,468.42		-1,468.42	
340	EMPLOYEE DEVELOPMENT	640.68	16,861.28	12,950.00	-3,911.28	130
356	TELEPHONE	188.56	942.83	3,044.00	2,101.17	31
360	PRINTING & MAILING PROJECTS	635.95	4,756.45	13,000.00	8,243.55	37
387	MEDICAL/VACCINES			500.00	500.00	
389	LEASE/RENTAL	13,420.98	80,914.55	199,211.00	118,296.45	41
399	RECRUITMENT/EMPLOYMENT TESTING			3,000.00	3,000.00	
410	OFFICE SUPPLIES	3,489.13	4,952.91	15,750.00	10,797.09	31
418	PROFESSIONAL SERVICES			3,000.00	3,000.00	
424	GAS AND OIL		83.23	2,000.00	1,916.77	4
427	VEHICLES MAINTENANCE			1,200.00	1,200.00	
428	SERVICE AGREEMENTS-CONTRACTS	985.15	7,115.67	22,008.00	14,892.33	32
490	MISC		54.21	500.00	445.79	11
497	TECHNOLOGY	13,443.38	25,792.24	37,379.00	11,586.76	69
500	SUPPLIES			850.00	850.00	
641	FURN & EQUIP-NON DEPRECIATED <\$5000		1,551.00	11,520.00	9,969.00	13
644	POSTAL METER RENT			2,772.00	2,772.00	
648	PROFESSIONAL PUBLICATIONS			535.00	535.00	
649	PROGRAMMING	1,564.25	3,145.26	16,000.00	12,854.74	20
650	E RESOURCES	3,428.39	24,121.64	44,065.00	19,943.36	55
662	BOOKS	10,950.43	44,206.86	112,324.00	68,117.14	39
663	MAGAZINES		4,572.07	4,850.00	277.93	94
664	AUDIO VIDEO	1,076.26	7,988.97	16,250.00	8,261.03	49
667	MEMBERSHIPS	275.00	2,419.00	4,320.00	1,901.00	56
669	INSURANCE			6,056.00	6,056.00	
672	EMERGENCY MEDICAL SUPPLIES	107.24	215.96		-215.96	

Combined Funds

		----- Current Year -----				
Account Object	Description	Current Month	Current YTD	Budget	Variance	%
680	Library of Things		129.98	4,500.00	4,370.02	3
689	PROMOTIONAL ACTIVITIES	2,235.01	2,562.19	13,680.00	11,117.81	19
740	SERVICE CHARGES		699.95	1,750.00	1,050.05	40
880	COST ALLOCATIONS	4,454.42	26,726.52	53,450.00	26,723.48	50
890	TRANSFERS OUT			10,000.00	10,000.00	
901	CATALOGING			3,210.00	3,210.00	
994	ODIN		29,249.20	34,500.00	5,250.80	85
	Total Account	128,023.52	1,049,322.34	2,632,068.00	1,582,745.66	40
	Total Expenses	128,023.52	1,049,322.34	2,632,068.00	1,582,745.66	40
	Net Income from Operations	-76,806.70	928,673.50			
Other Revenue						
360000	MI SCELLANEOUS REVENUE	718.73	6,305.55	5,000.00	1,305.55	126
360100	SPONSORSHIPS		457.60	3,000.00	-2,542.40	15
361000	INTEREST ON INVESTMENTS		78,567.48	142,113.00	-63,545.52	55
372500	SALE OF EQUIPMENT	1,191.00	1,191.00		1,191.00	
375000	DONATIONS		500.00		500.00	58
	Total Other Revenue	1,909.73	87,021.63	150,113.00	-63,091.37	58
	Net Income	-74,896.97	1,015,695.13			

Note: Formula for % columns = revenue*100/total expense for Fund.

Item Title: Election of Officers and Appointment to Subcommittees

Requested Action/Staff Recommendation: Determine Board Officer roles and appoint Board members to subcommittees

Summary

Per the West Fargo Public Library Board of Directors bylaws, an election should be held to determine who serves each role on the Board each July. Additionally, sitting President Liann Hanson would like to discuss the creation of and appointment of Board members to subcommittees.

More Information

Article XIII of the WFPL Board of Directors bylaws states: "At the regular July meeting, one (1) Board member shall be elected President, one (1) Board member elected Vice President, and one (1) Board member elected Treasurer. A Secretary shall be appointed either from Board members or from Library staff. If a Secretary is not appointed, Library staff shall be responsible for the duties of the Secretary."

Per Article XIV: Duties are as follows:

President

1. Call meeting;
2. Assist Library Director with preparing meeting agenda;
3. Review materials before meeting;
4. Call meeting to order;
5. Preside over meeting;
6. Appoint committees with confirmation from the Board;
7. Review draft of meeting minutes;
8. Lead performance review of Library Director;
9. Other duties as described in the Library Policy Manual.

Vice President

1. Act in the absence of the President as described above.

Treasurer

1. Assist Library and City staff in budget preparation through participation in called meetings;
2. Advocate for Library funding needs.

Secretary

1. Maintain accurate minutes of all meetings of the Board;
2. Provide minutes for Board approval;
3. Assure that minutes are filed appropriately."

West Fargo Public Library Board

Liann Hanson, President
Vacant, Vice President
Tony Stukel, Treasurer
Commissioner Tyler Erickson & Sara Westall, Board Members

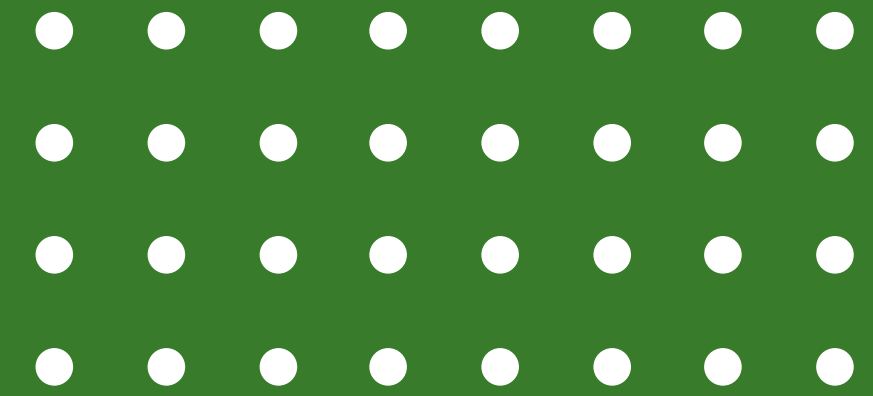


West Fargo Public Library ■ ■ ■
DIRECTOR'S REPORT

For July 9, 2026 Library Board Meeting
Presented by Jenna Kahly, Library Director



2026 Finances



Expenditures through June

Month to Date

\$128,203.52

Year to Date

\$1,049,322.34

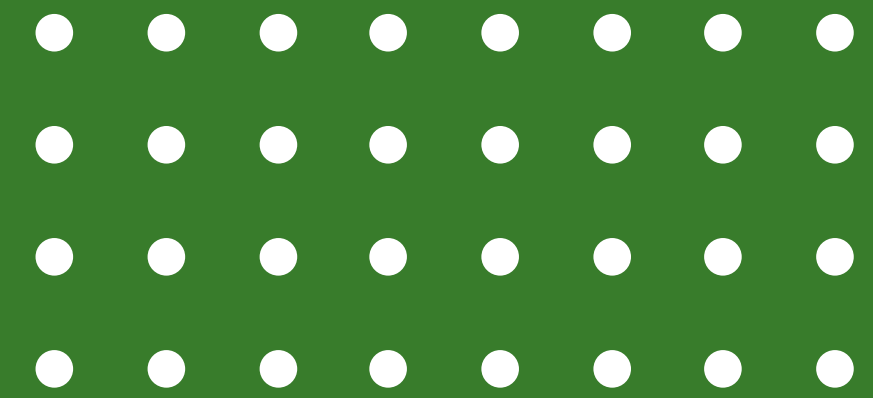
Available Appropriation

\$1,582,745.66





2026 Finances



Income

State Aid

\$44,134.69

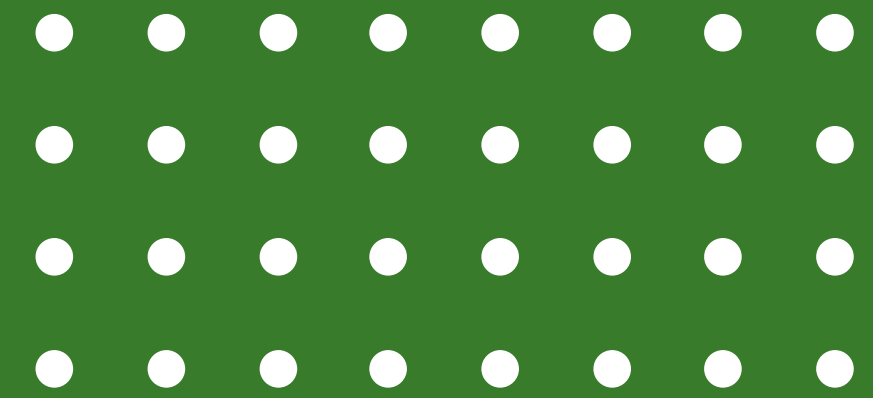
Auction of Old Blue Van*

\$1,191.00

**We need to replace this as a second vehicle is needed for about 215 miles/month in the winter and 245 miles/month in the summer. Cost estimate for a new AWD Chevy Equinox as recommended by PW was \$28,560.*



FY 2027 Budget Timeline



April

First draft of Preliminary Budget shared with Library Board

May

Approval of Preliminary Budget by Library Board, shared with City

June

First draft of City Preliminary Budget shared with Commission

July

City Preliminary Budget work continues

August

City Preliminary Budget must be approved on or before **Aug. 10** (NDCC 40-40-04)

September

Library Final Budget Draft presented to Board
City has Public Hearing on budget

October

City Final Budget due to County Auditor on or before **October 10**.
Library Budget finalized at Oct. meeting after our levy has been set by the Final City Budget

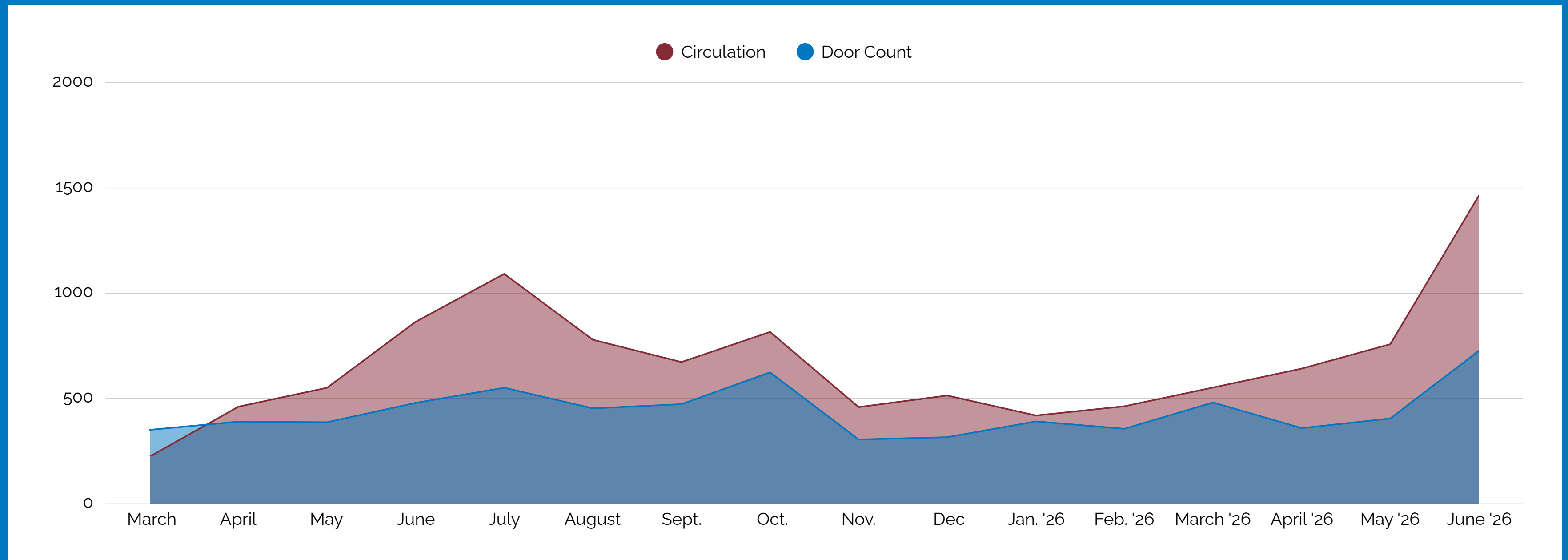
Satellite Library

June Satellite Usage

Physical Circulation - **1464**

Door Count - **727**

Highest circulation and visits at Satellite yet!

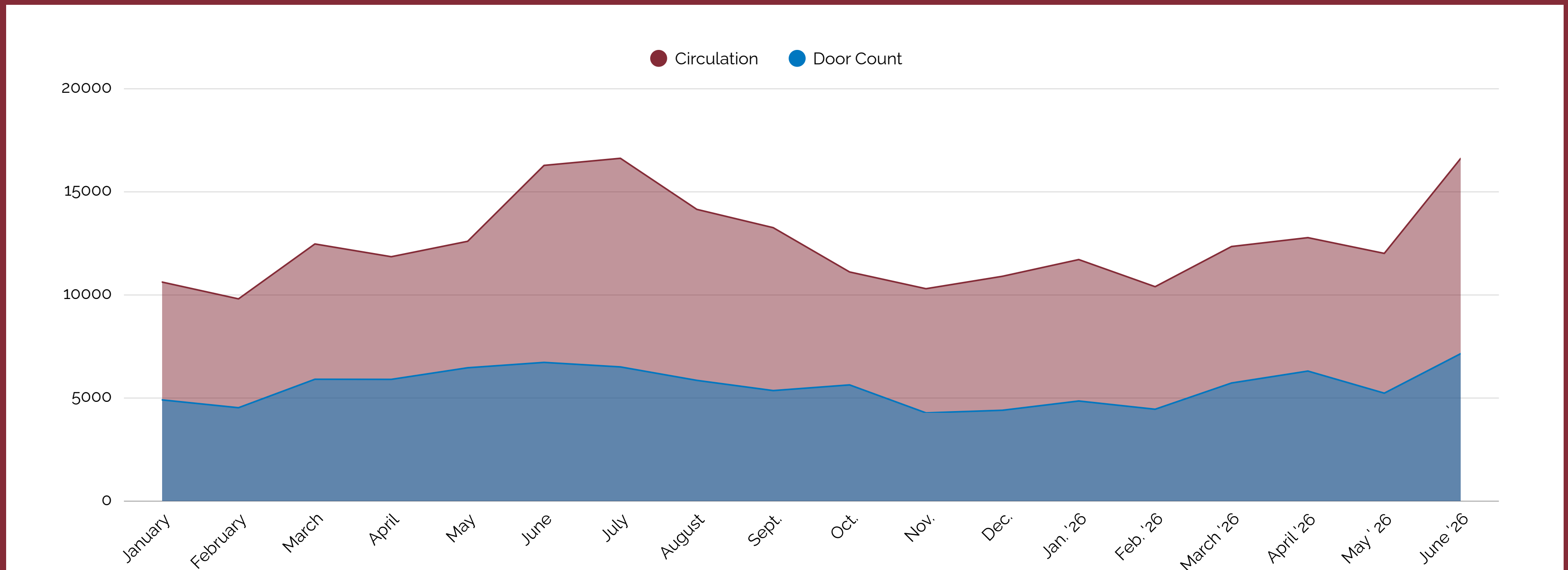
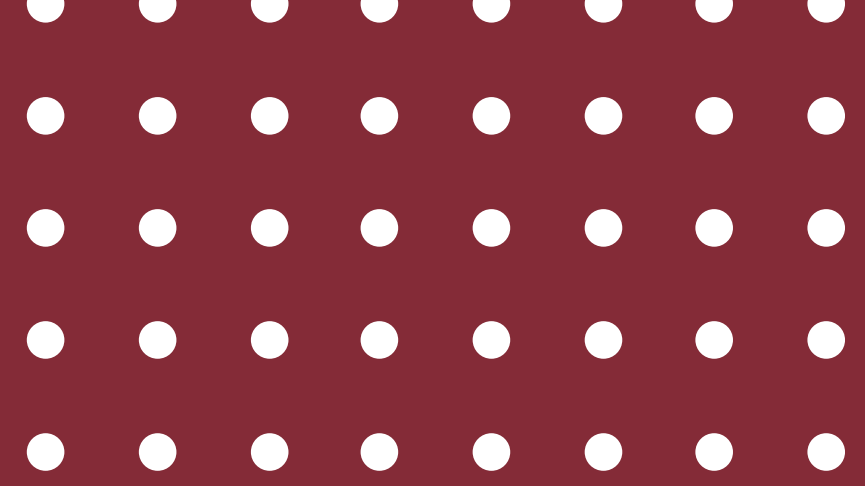


Main Library

June Main Library Usage

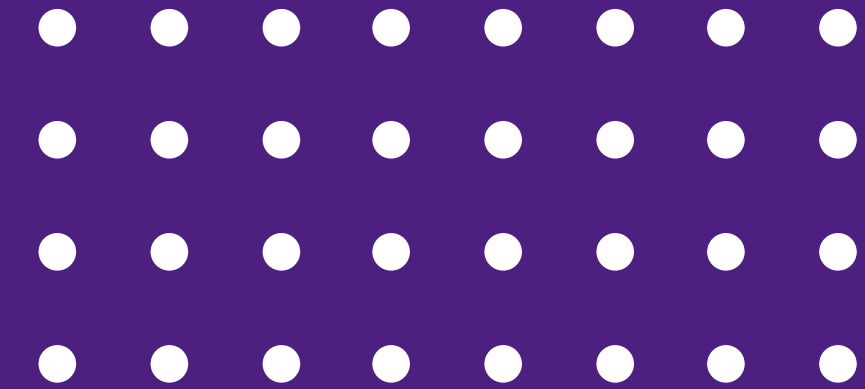
Physical Circulation - **16,623**

Door Count - **7,150** Highest door count in the last 6 years!

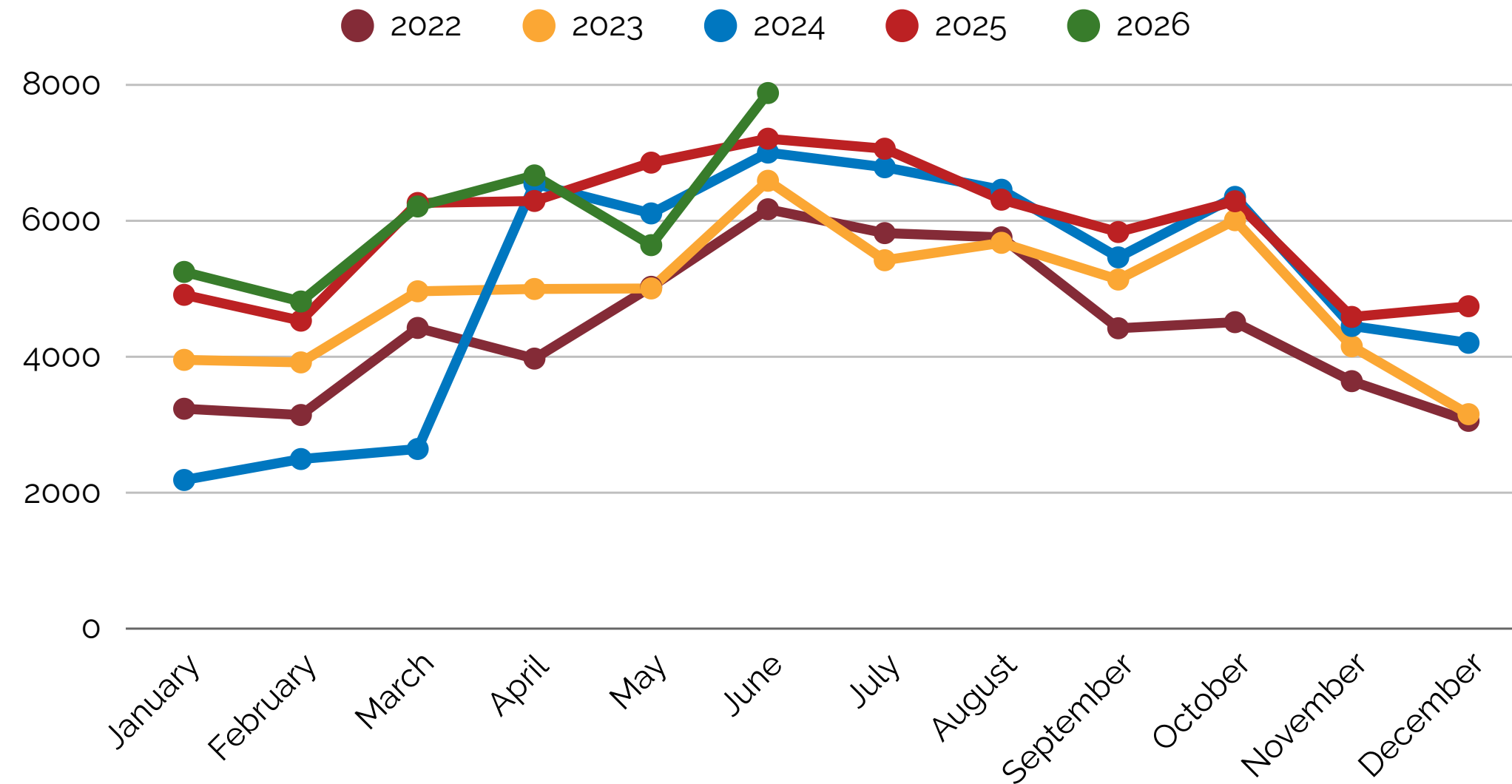




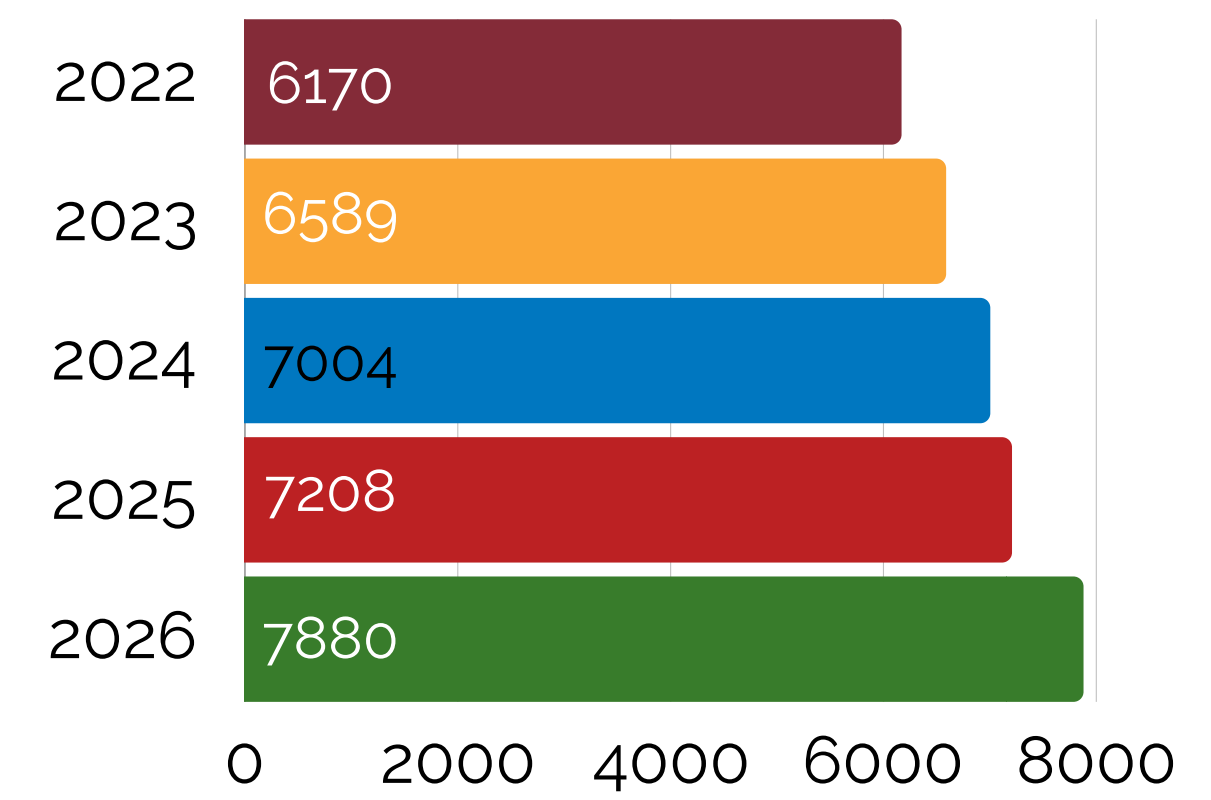
Door Count



Total Door Count

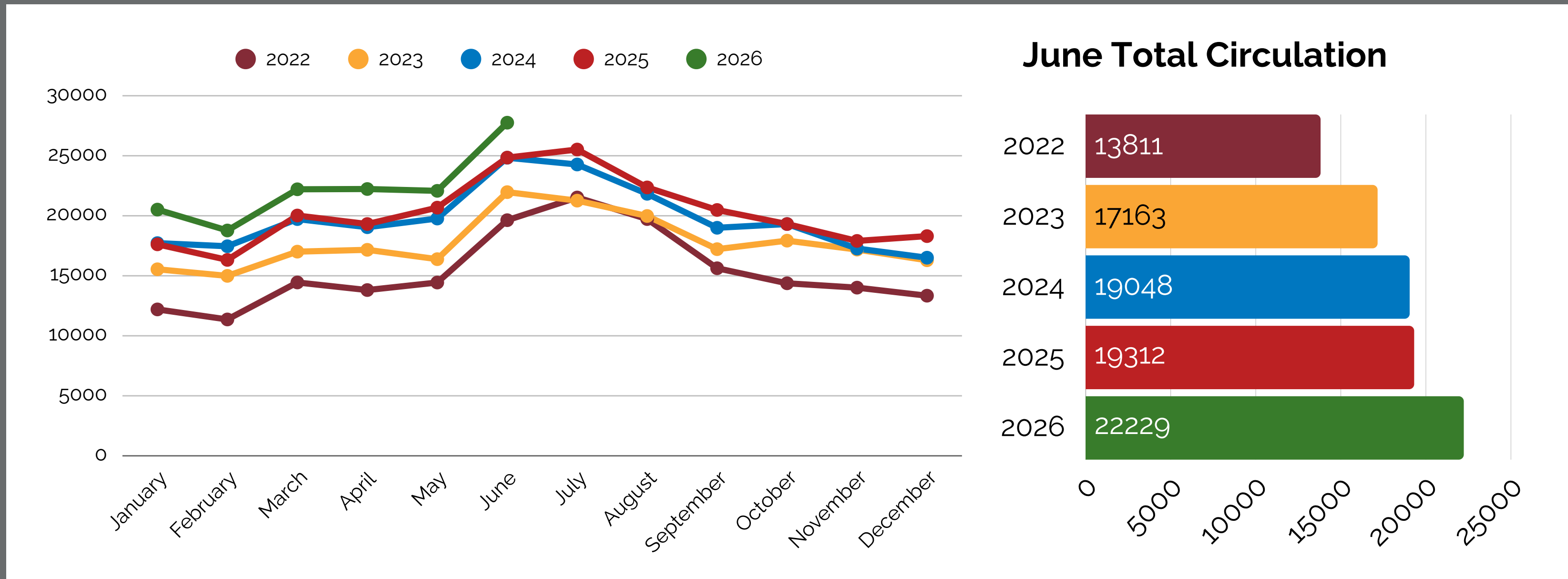
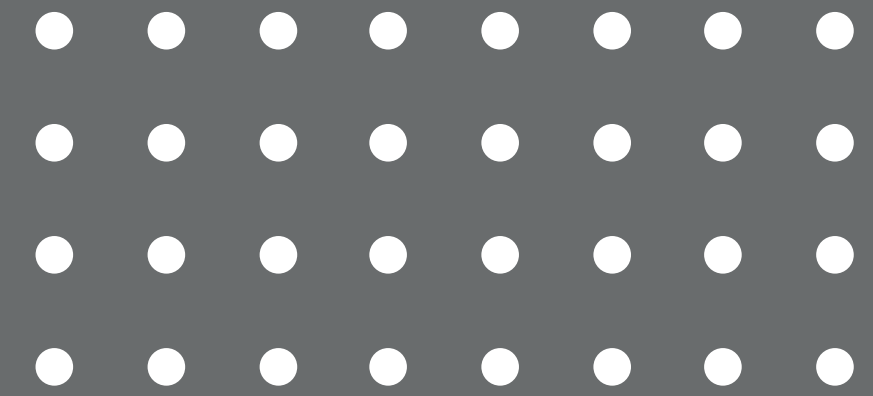


Monthly Visits: June



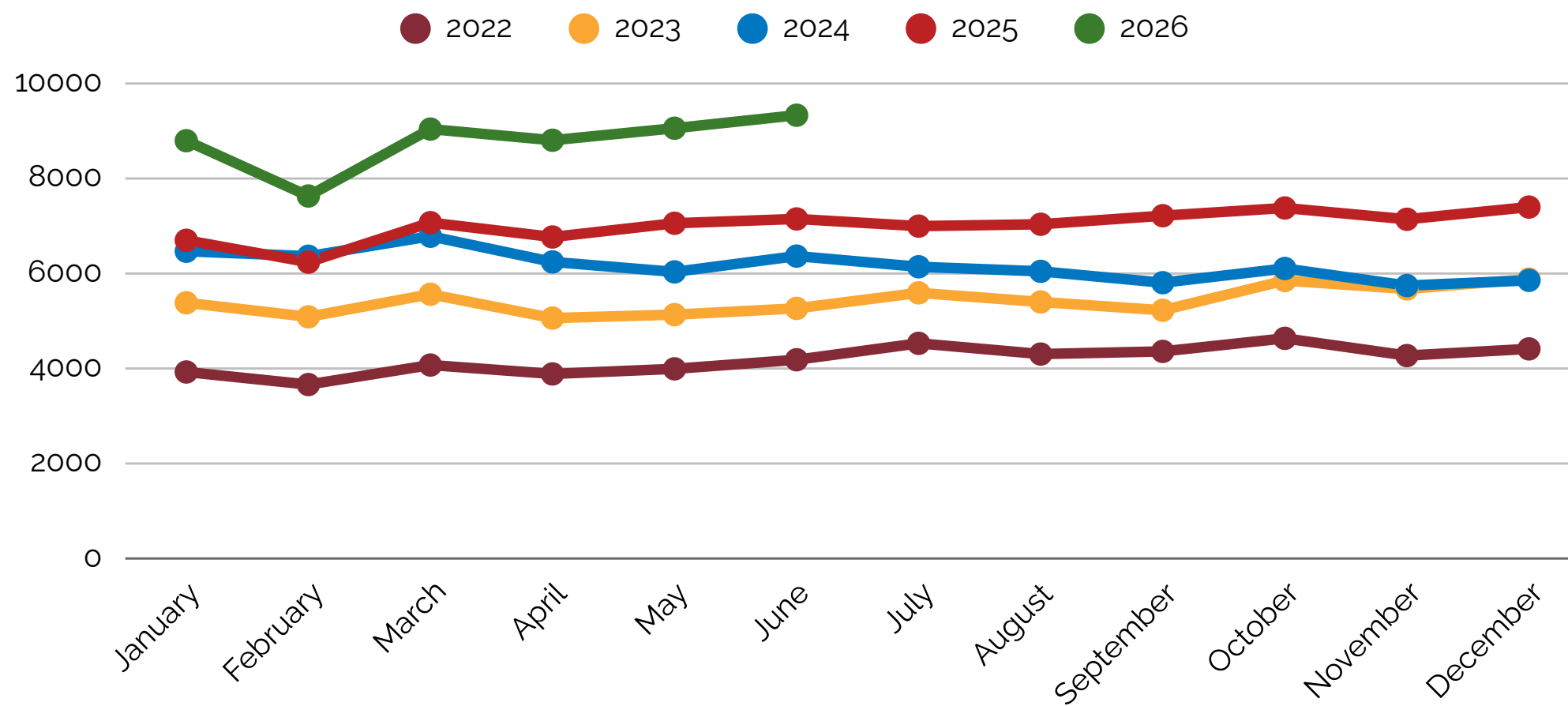
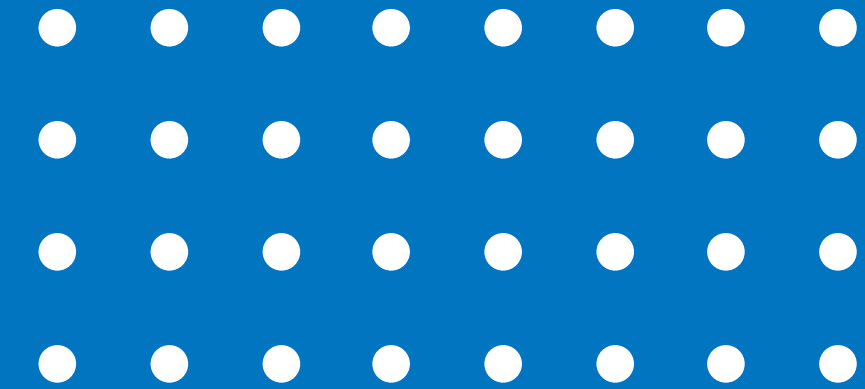


Total Circulation





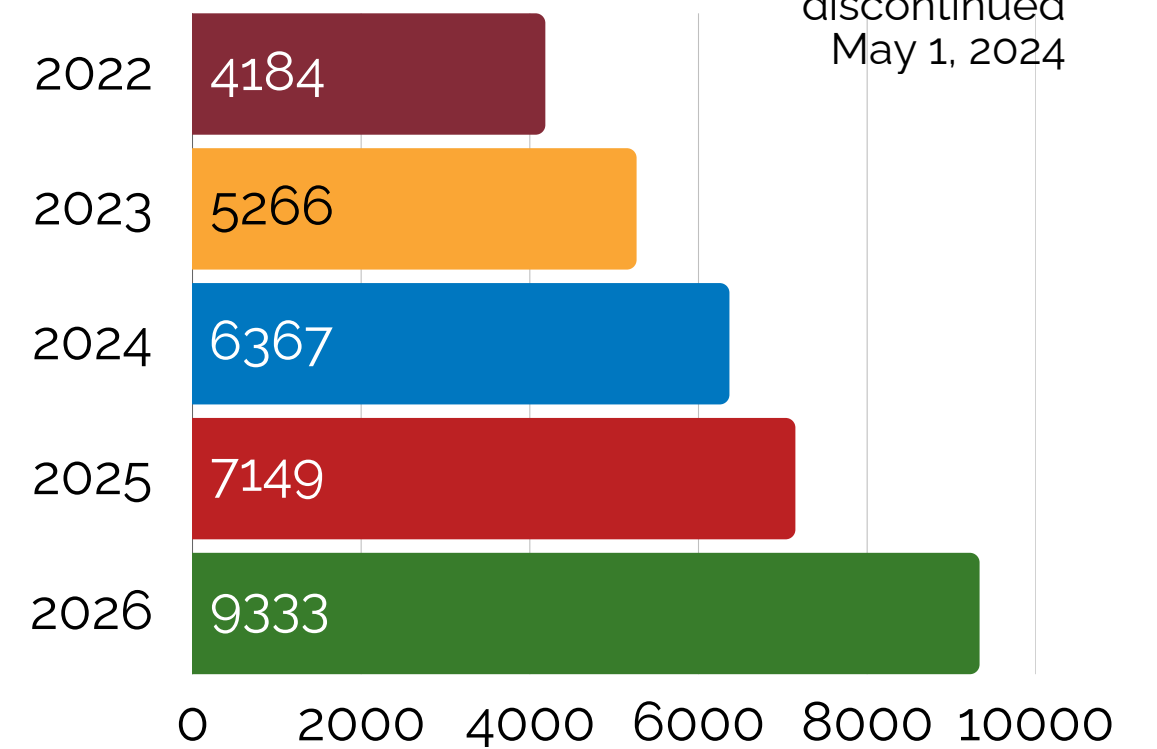
Electronic Circulation



June Digital Circulation

OverDrive/Libby & Hoopla*

*Hoopla was discontinued May 1, 2024



■ ■ ■ Adult Programs

Recent Updates

- Movies in the Commission Chambers continue to be successful. This month, showing family-friendly titles about dinosaurs.
- Golden Gatherings has been well-received, resulting in great conversations and benefiting attendees.
- Started a series of “Silent Reading Parties” in local parks. A Library on Wheels stop for adults.
- Team is hard at work planning fall events, including participation in One Book, One Community and adding more senior-focused wellness opportunities.

one book
one community
FARGO • MOORHEAD • WEST FARGO

2026 Selected Title

**Author Visit with
Ian S. Port
October 22 at 7 PM**

**THE
BIRTH
OF
LOUD**

**LEO FENDER, LES PAUL,
AND THE GUITAR-PIONEERING RIVALRY
THAT SHAPED ROCK 'N' ROLL**

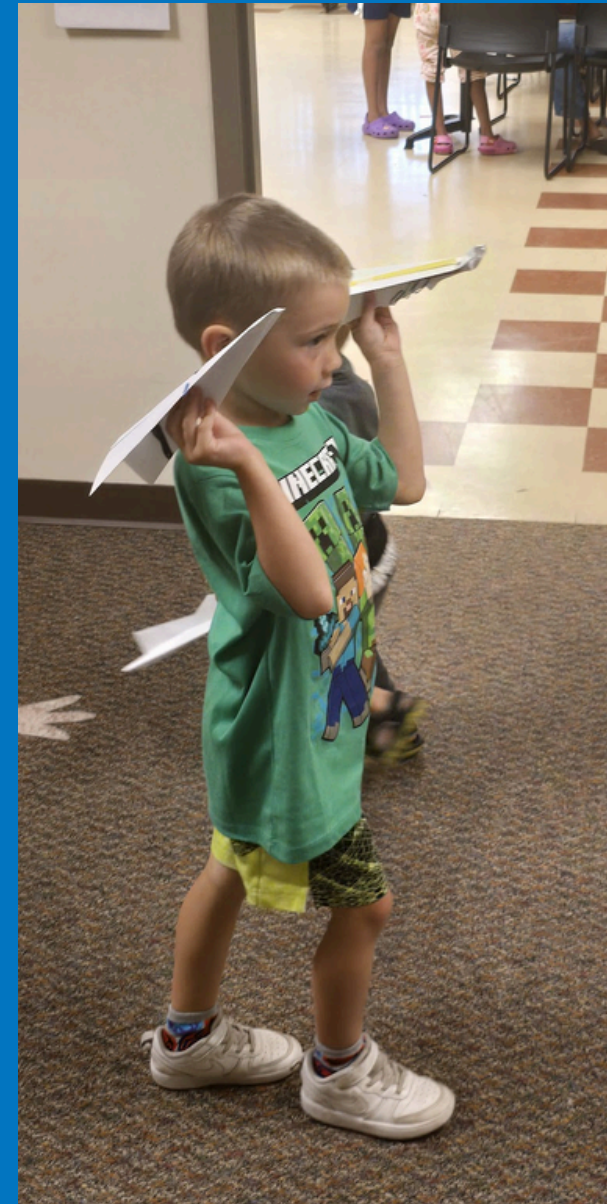
IAN S. PORT

**Related Events:
1book1community.org**

■ ■ ■ Youth & Family Programs

Recent Updates

- Over 1000 attendees at in-library youth and family programs in June! More than last year.
- The team has been very busy with weekly Summer Boost programming and Library on Wheels.
- Summer Kickoff Party was successful with nearly 300 attendees at the end of May.
- Storytimes continue to be incredibly popular, including second session of Teeter Tots.
- America's Birthday Party had nearly 200 people come out for Fourth of July festivities.



SUMMER READING CHALLENGE

Challenges available for all ages. Tracking starts June 1.

Read. Track. Earn Rewards.

UNEARTH
A STORY™

This summer's theme is exploring dinosaurs, paleontology, archeology and the wonders of our world through our challenge prizes and over 100 special events and programs at the library and beyond!



Sign up at westfargolibrary.org/beanstack



Tintes Park
131 6th Ave. E
5:30 - 7 p.m. Tuesday, July 21

Goldenwood Park
1330 5th St. NW
9 - 10:30 a.m. Monday, July 27

West Fargo Public Library
Main Location 215 3rd St. E
Satellite Branch 2515 6th St. E

Elmwood Park
500 13th Ave. W
5:30 - 7 p.m. Tuesday, Aug. 4

Maplewood Park
1504 17th Ave. E
5:30 - 7 p.m. Tuesday, Aug. 11

Rendezvous Park
1055 32nd Ave W
5:30 - 7 p.m. Tuesday, July 28
9 - 10:30 a.m. Monday, Aug. 10

River's Bend Park
2541 1st St. E
9 - 10:20 a.m. Monday, July 13

Dakota Park
5600 9th St. W
9 - 10:30 a.m. Monday, July 20
9 - 10:30 a.m. Monday, Aug. 3

Shadow Wood Park
3545 4th St. E
5:30 - 7 p.m. Tuesday, July 14



Other Reminders



WEST FARGO PUBLIC LIBRARY
SUMMER BOOST

WEST FARGO PUBLIC LIBRARY
on wheels

END-OF-SUMMER CELEBRATION

5 - 7 p.m. Thursday, Aug. 13
at the POW/MIA Plaza
(400 Sheyenne St.)

The poster features a large orange circle on a background of a summer festival. The text is white and yellow. Logos for 'WEST FARGO PUBLIC LIBRARY SUMMER BOOST' and 'WEST FARGO PUBLIC LIBRARY on wheels' are at the top. The main title 'END-OF-SUMMER CELEBRATION' is in large, bold letters. The date and location are at the bottom.



Library Card DESIGN CONTEST

WEST FARGO PUBLIC LIBRARY

YOUR DESIGN HERE

YOUR DESIGN HERE

For artists of all ages!
Submissions **due July 31** at a
WFPL location or online.



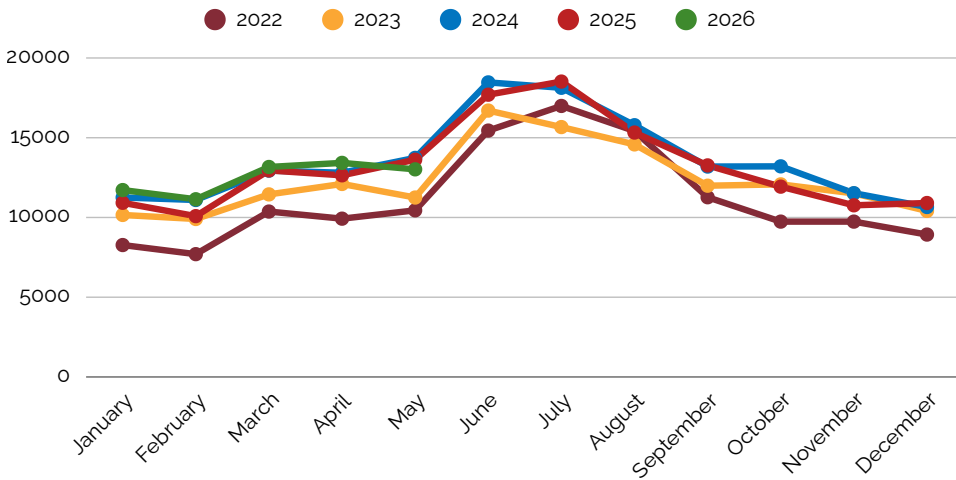
wfplinfo/designcontest

The poster has a blue background with a white and yellow design. The title 'Library Card DESIGN CONTEST' is in a mix of script and sans-serif fonts. Below it are three white rounded rectangles representing library cards. One card shows the library logo and name, while the other two say 'YOUR DESIGN HERE'. A QR code is in the bottom right, and the website 'wfplinfo/designcontest' is at the very bottom.

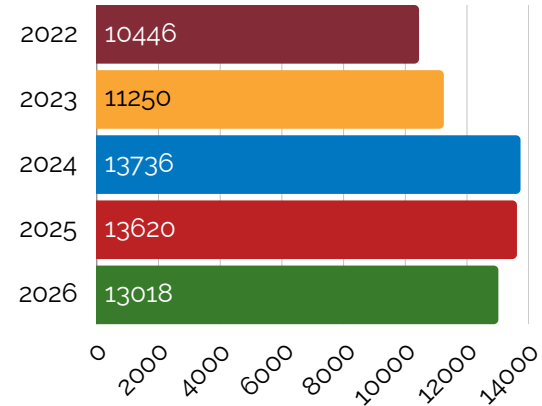
QUESTIONS?

Thank you for your time!

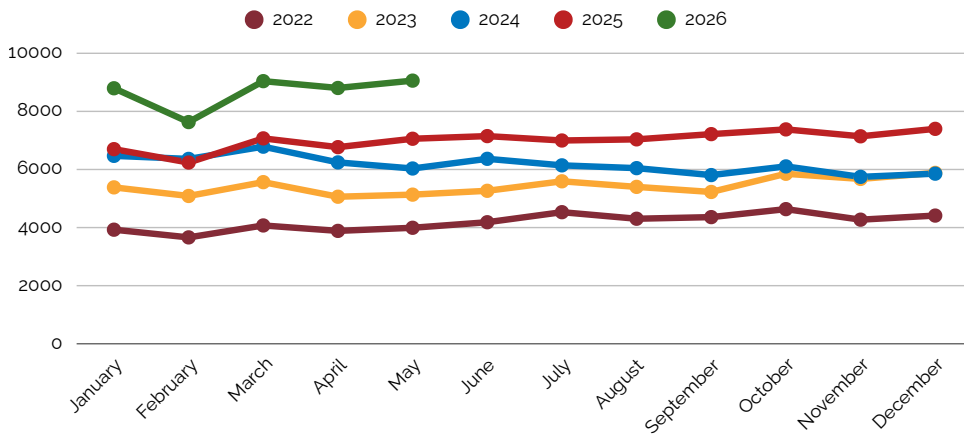
Physical Item Circulation - All Locations



May Physical Circulation

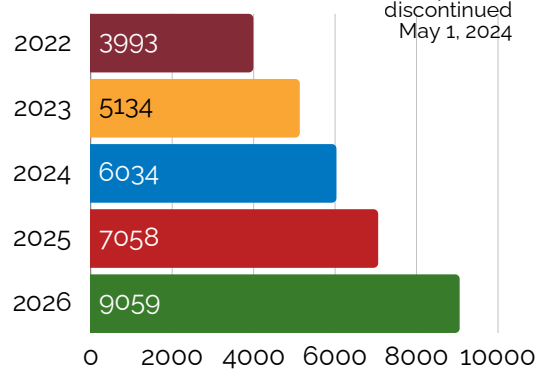


Electronic Materials Circulation

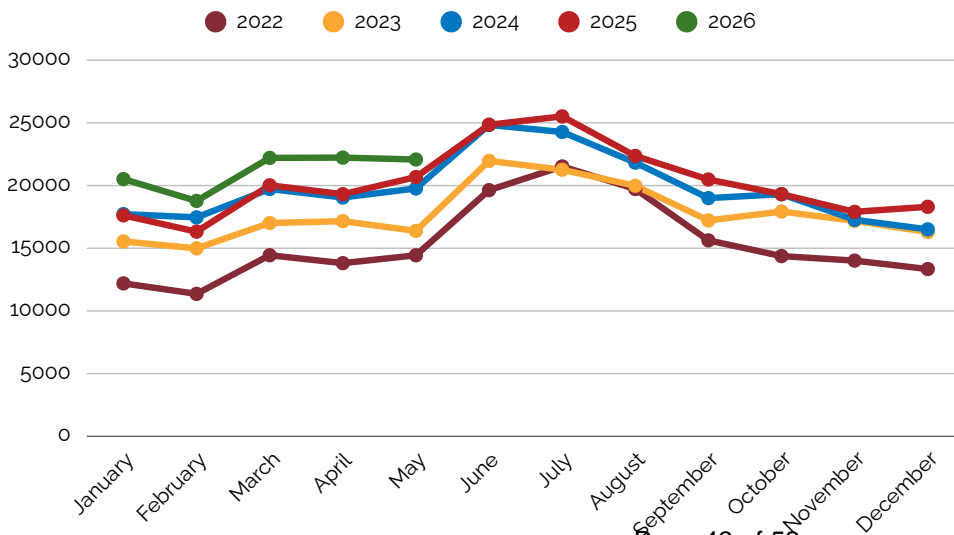


May Digital Circulation

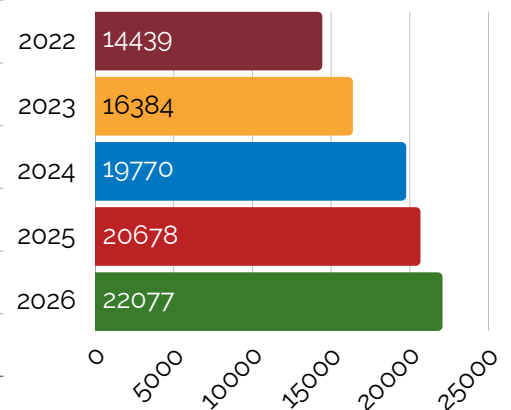
OverDrive/Libby & Hoopla*



Total Circulation

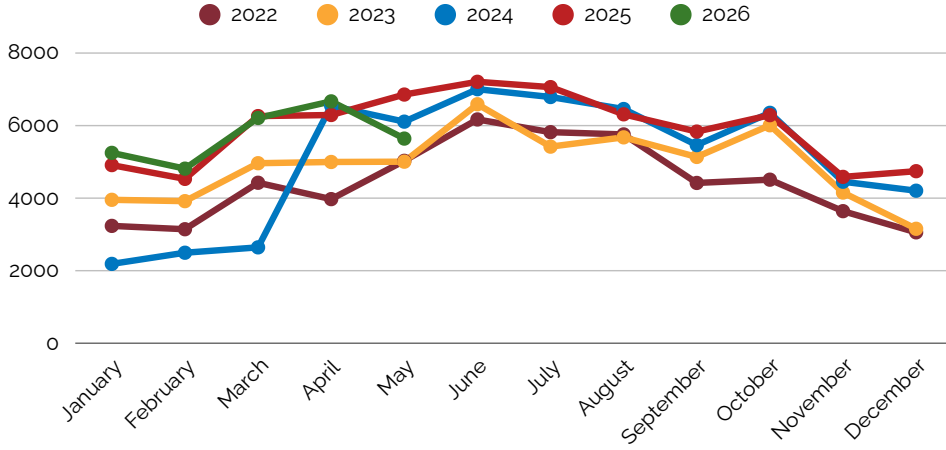


May Total Circulation

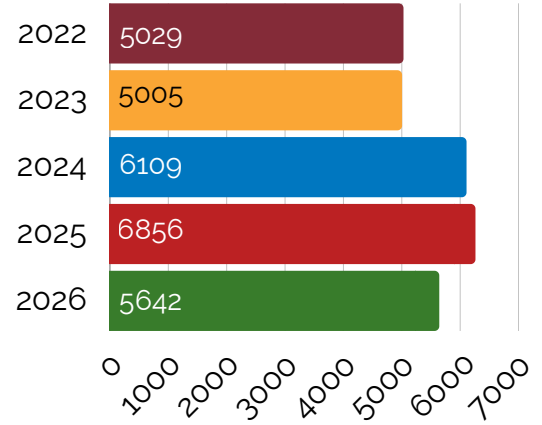


Door Count

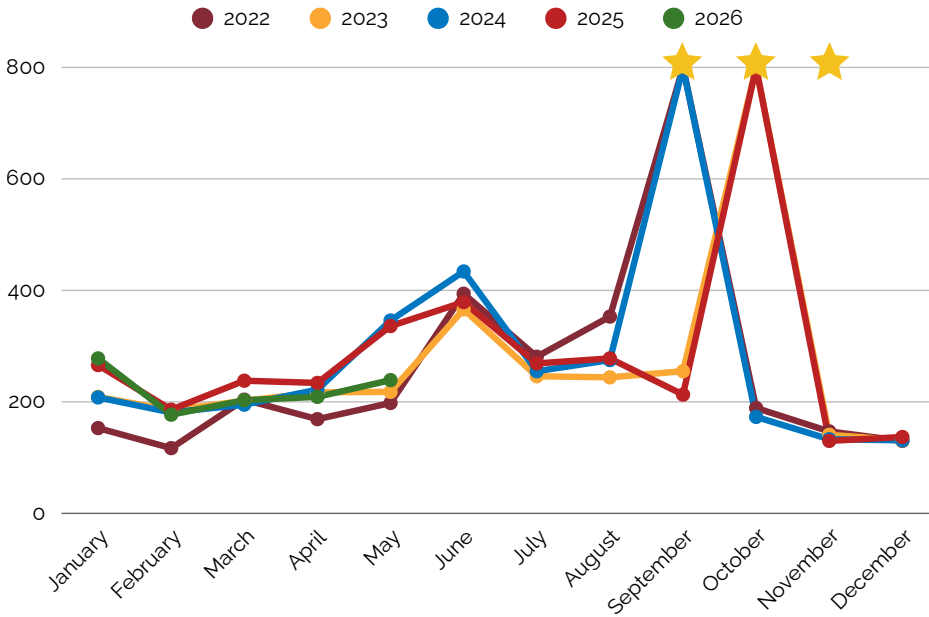
Total Door Count



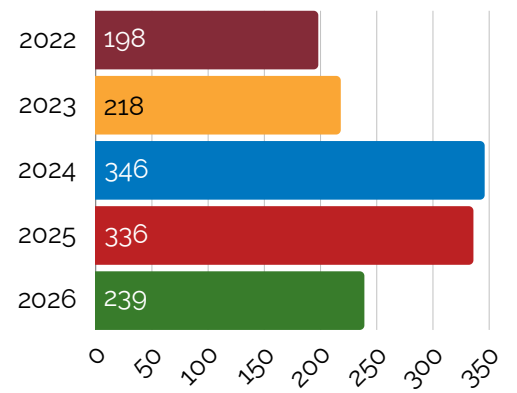
Monthly Visits: May



Library Card Signups



Monthly Library Card Signups: May

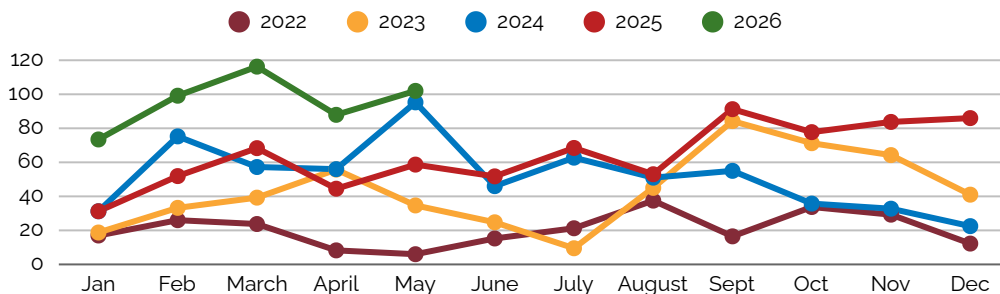


May Active Library Cards - 12,848

★ In Nov. 2021, the WFPL added over 5000 library cards through a partnership with West Fargo Public Schools. This partnership continues, with additions occurring in Sept. 2022, Oct. 2023, Sept. 2024, and Oct. 2025.

Meeting Room Usage

Meeting Room Hours Reserved



Total Meeting Room Use

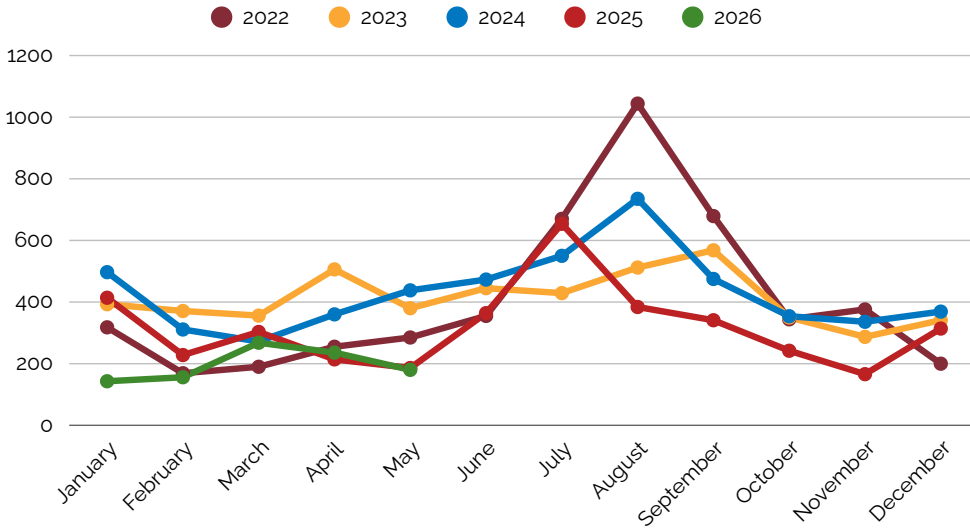
May Hours Reserved 102

Hours Reserved YTD 478

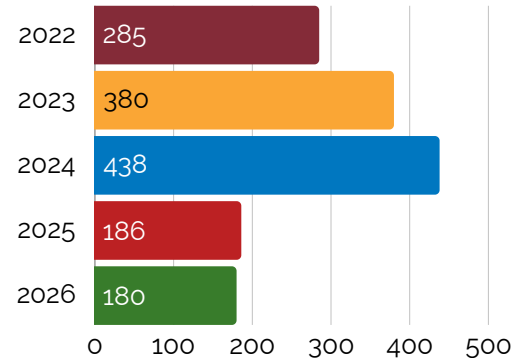
May Total Reservations 51

Reservations YTD 174

Offsite Book Drop Usage



Offsite Book Drop Usage



Discontinued use of Eagle Run book drop in March 2025.

Outreach Services

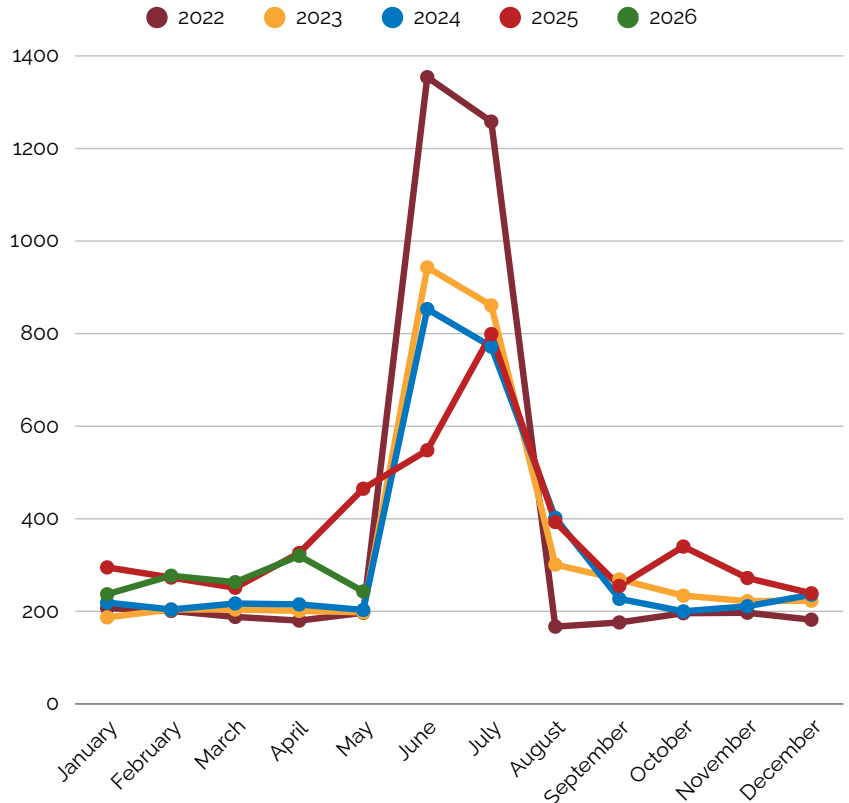
Monthly Outreach Circulation

Total Monthly Circulation*	2022	2023	2024	2025	2026
	197	198	203	465	243

*This number includes senior book deliveries, daycare book deliveries, and any books checked out from outreach pop-up libraries.

Outreach Deliveries and Item Circulation

Senior Living Locations Served	5
Senior Outreach Participants	19
Daycare Locations Served	5
Total Outreach Circulation	243

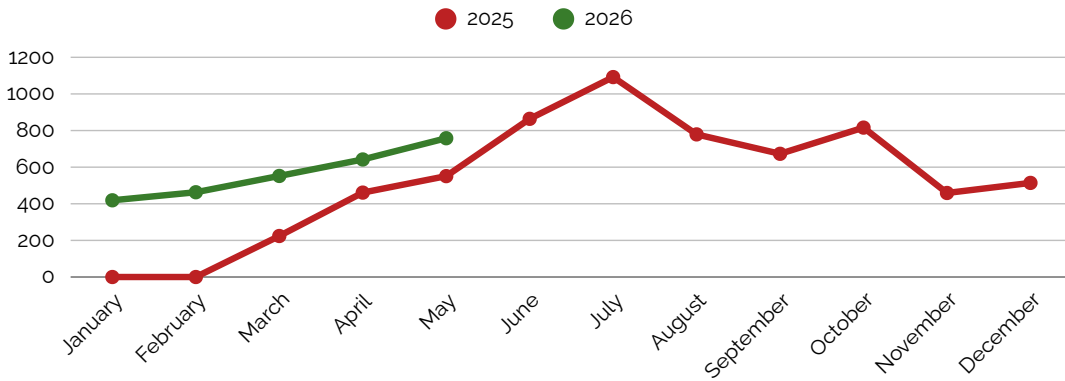


Outreach & Community Events Attendance

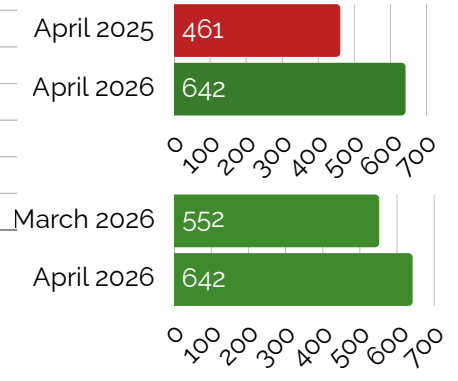
The West Fargo Public Library did not attend any community events in May.

Other Satellite Library Stats

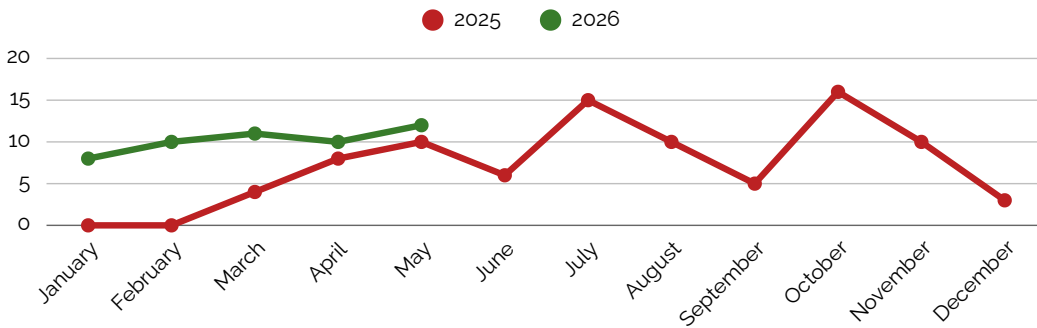
Physical Item Circulation at Satellite



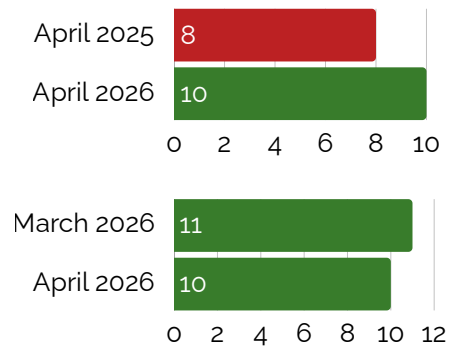
Monthly Satellite Circulation



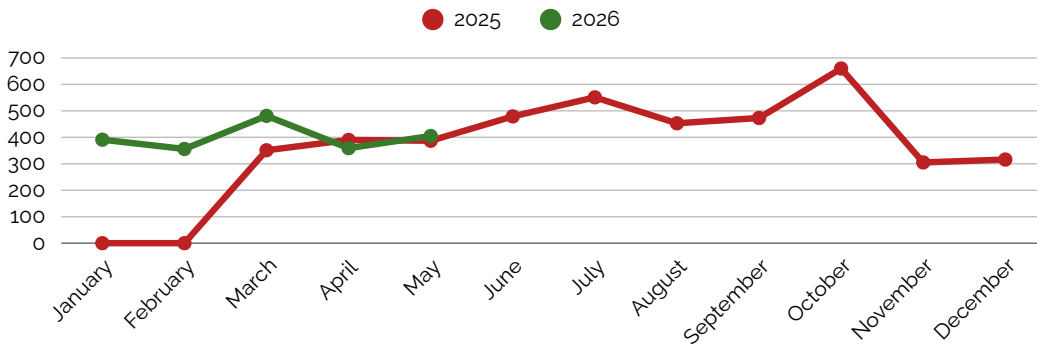
Library Card Signups at Satellite



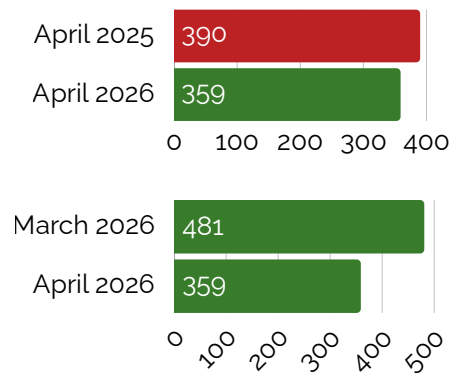
Satellite New Library Cards



Door Count at Satellite



Satellite Door Count



Programs

Program Attendance

Youth

Ready to Read Storytime	43
Baby Boost Storytime	89
Teeter Tots Storytime	93
Teen Events	1
STEM	17
Other Youth Events	25
Total Attendance	268

Adult

Book Clubs	44
Movie Screenings	104
Writing Circle	16
Other Clubs	7
Other Events	8
Total Attendance	179

All-Ages

Model Trains	233
Summer Kickoff Party	280
Total Attendance	513

Reference Services

Technology Tutoring	7
Notary Public	Paused
Total Attendance	7

Reading & Activity Challenges

Career Readiness Challenge (Ongoing)

Monthly New Registrations	6
YTD Registrations	14
Lifetime Registrations	92

1000 Books Before Kindergarten (Ongoing)

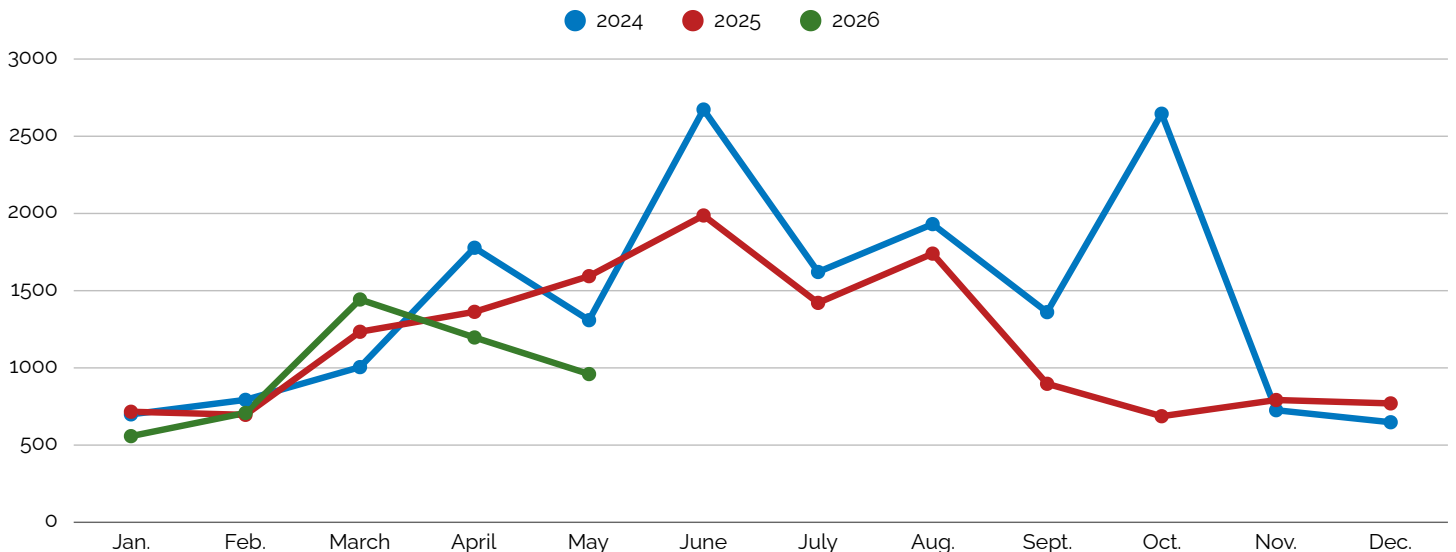
Monthly New Registrations	4
YTD Registrations	18
Lifetime Registrations	820

March Madness Reading Challenge (ended April 12)

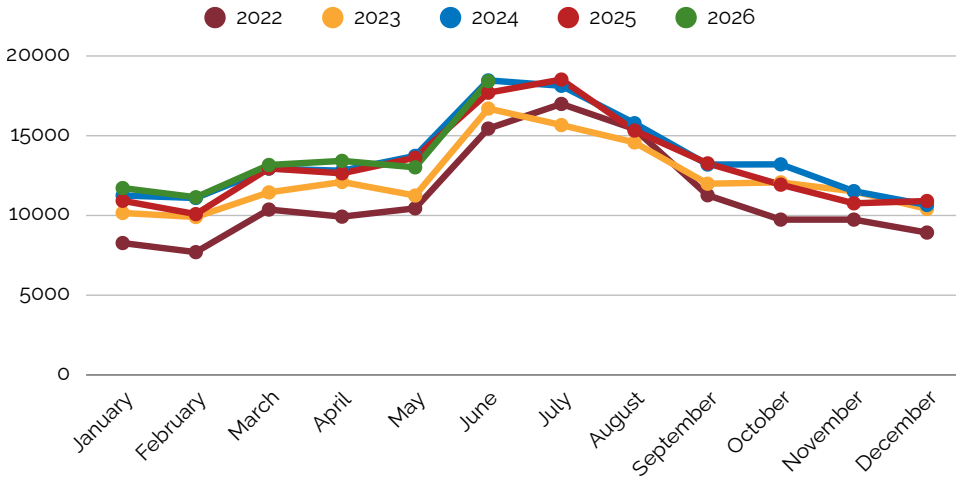
Total Registrations	252
Challenge Completions	117

Youth Services is still helping facilitate reading challenges for area middle schools in addition to our challenges.

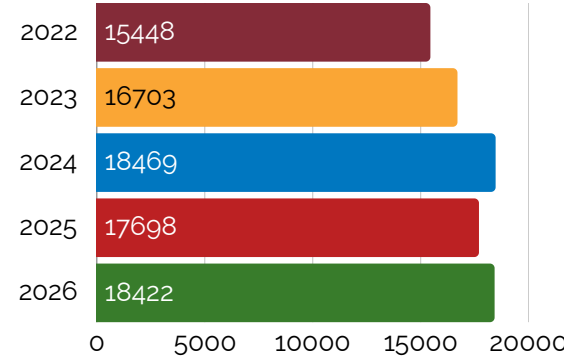
Total program attendees **960**
(in-library & outreach event attendance in May 2026.
This count does not include reference services.)



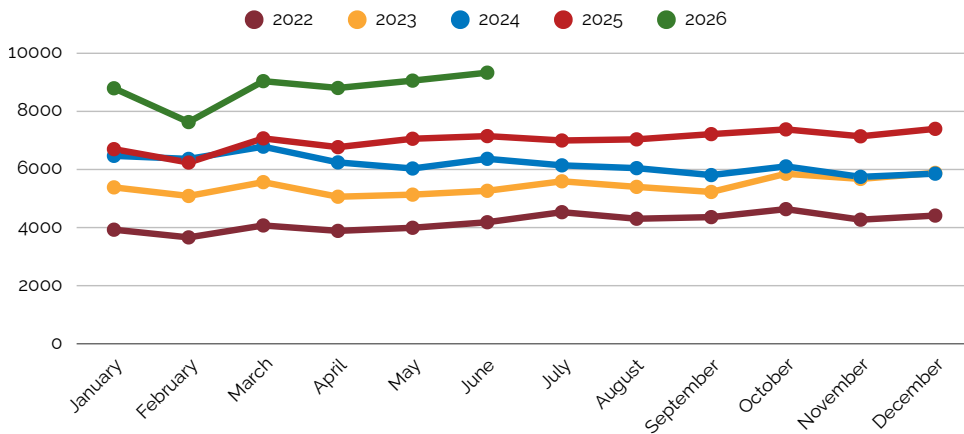
Physical Item Circulation - All Locations



June Physical Circulation

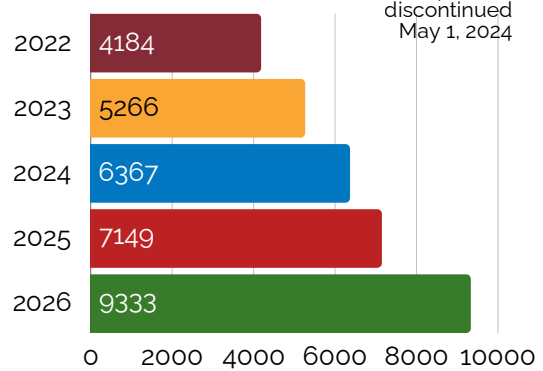


Electronic Materials Circulation

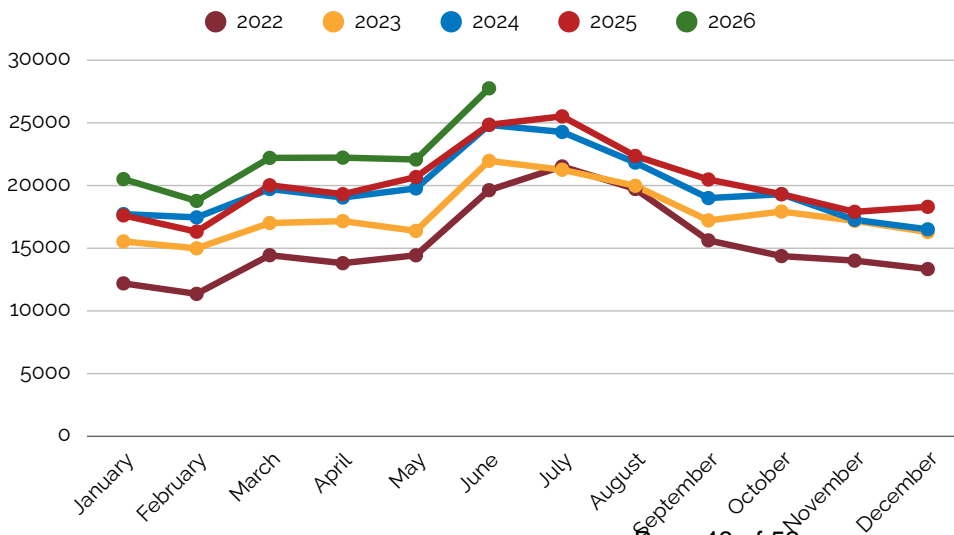


June Digital Circulation

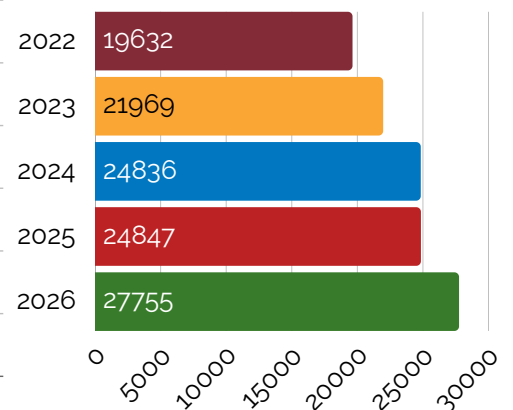
OverDrive/Libby & Hoopla*



Total Circulation

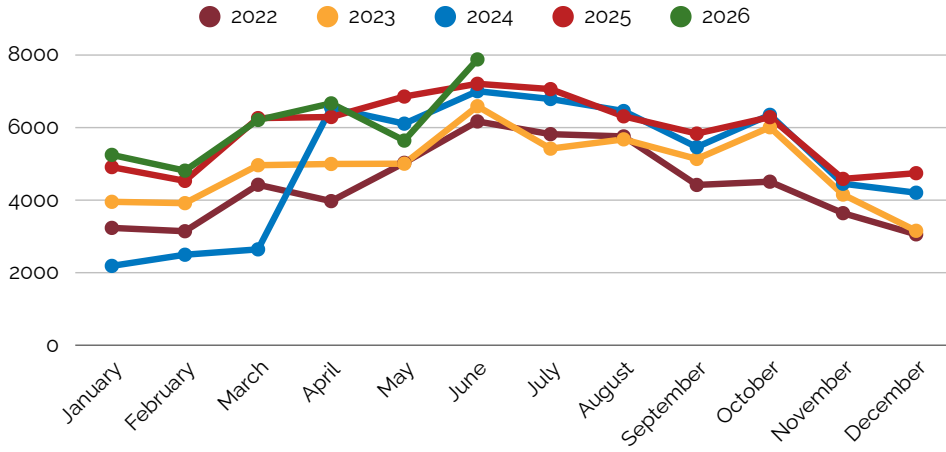


June Total Circulation

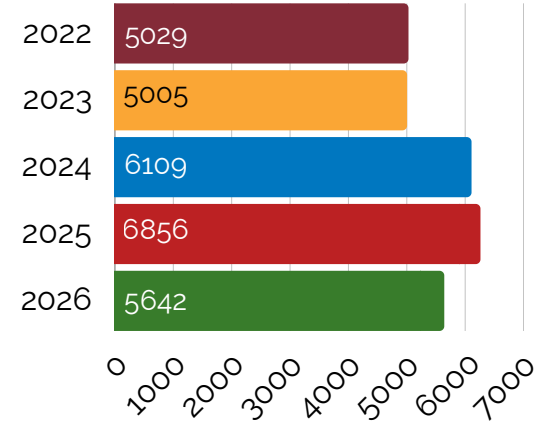


Door Count

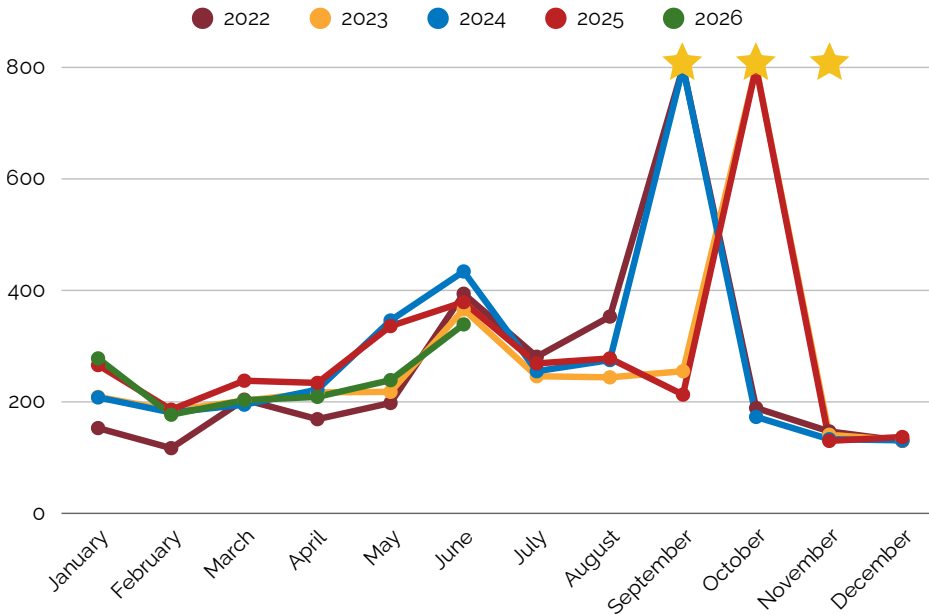
Total Door Count



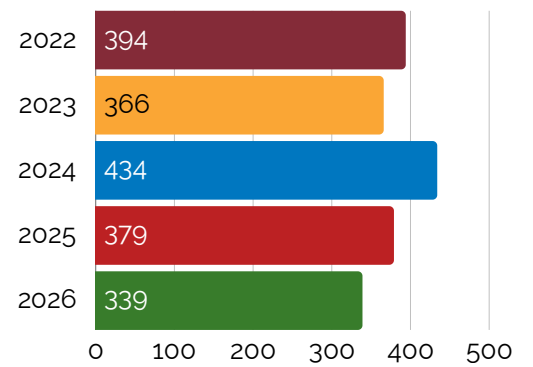
Monthly Visits: June



Library Card Signups



Monthly Library Card Signups: June



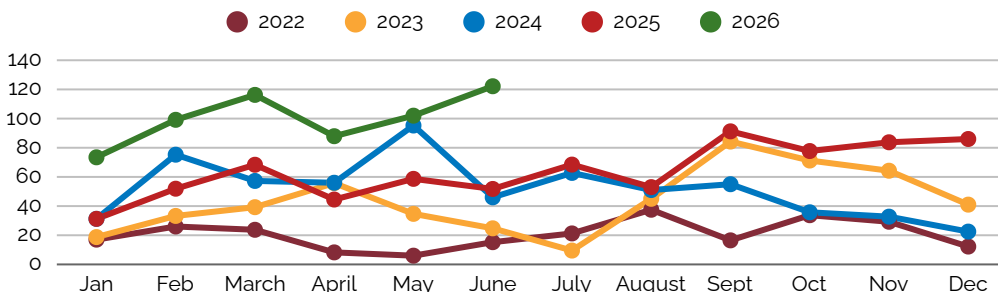
★ In Nov. 2021, the WFPL added over 5000 library cards through a partnership with West Fargo Public Schools. This partnership continues, with additions occurring in Sept. 2022, Oct. 2023, Sept. 2024, and Oct. 2025.

May Active

Library Cards - 12,970

Meeting Room Usage

Meeting Room Hours Reserved



Total Meeting Room Use

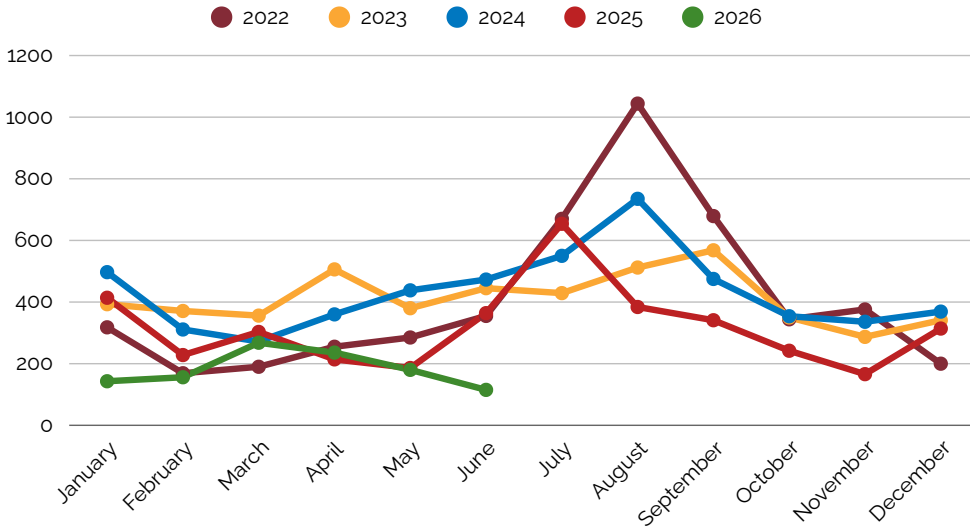
Month Hours Reserved 122

Hours Reserved YTD 591

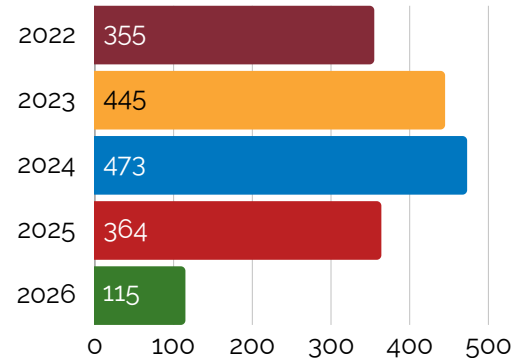
Month Total Reservations 59

Reservations YTD 284

Offsite Book Drop Usage



Offsite Book Drop Usage



Discontinued use of Eagle Run book drop in March 2025.

Outreach Services

Monthly Outreach Circulation

Total Monthly Circulation*	2022	2023	2024	2025	2026
	1354	943	853	548	335

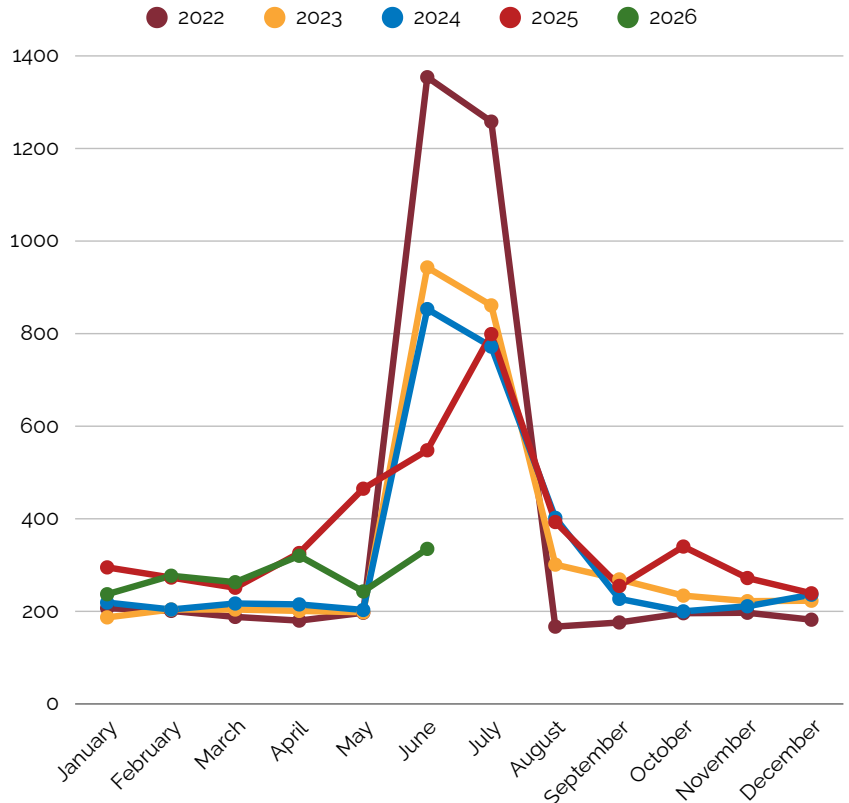
*This number includes senior book deliveries, daycare book deliveries, and any books checked out from outreach pop-up libraries.

Outreach Deliveries and Item Circulation

Senior Living Locations Served	5
Senior Outreach Participants	17
Daycare Locations Served	5
Total Outreach Circulation	335

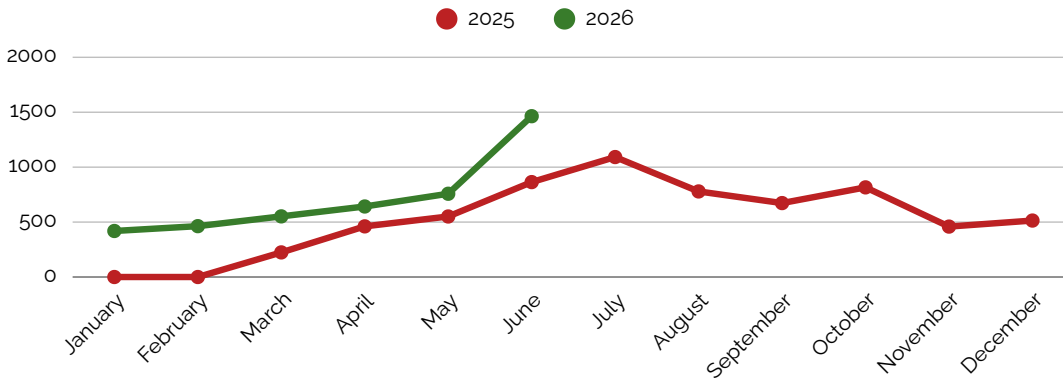
Outreach & Community Events Attendance

Library on Wheels stops	294
Senior Extravaganza	200
Total	494

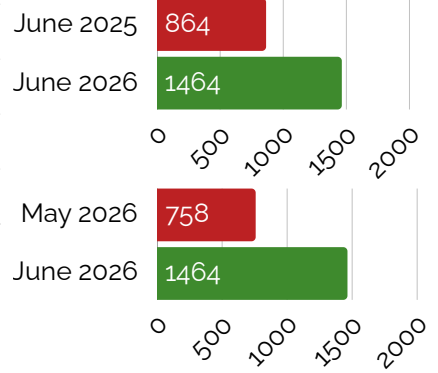


Other Satellite Library Stats

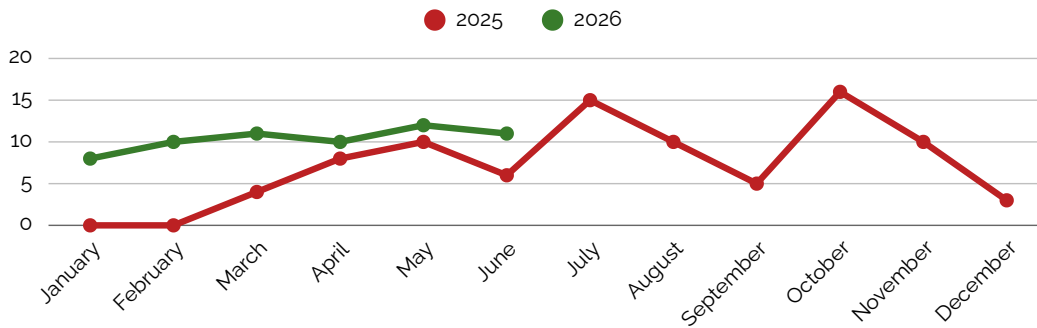
Physical Item Circulation at Satellite



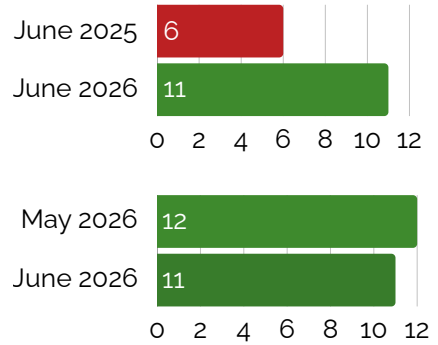
Monthly Satellite Circulation



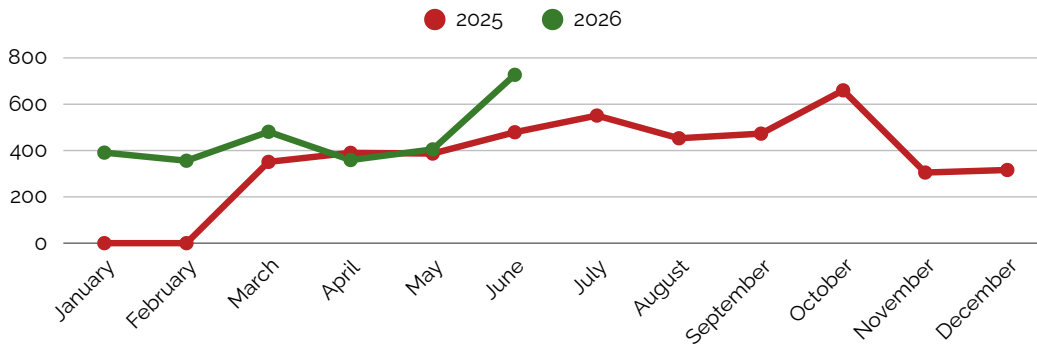
Library Card Signups at Satellite



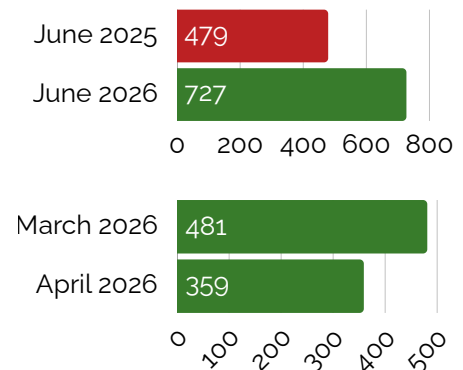
Satellite New Library Cards



Door Count at Satellite



Satellite Door Count



Programs

Program Attendance

Youth

Ready to Read Storytime	245
Baby Boost Storytime	161
Teeter Tots Storytime	250
Teen Events	25
STEM	128
Other Youth Events	191
Total Attendance	1000

Adult

Book Clubs	36
Movie Screenings	149
Writing Circle	14
Senior Events (55+)	12
Other Clubs	n/a
Other Events	23
Total Attendance	179

All-Ages

Popcorn Theatre	28
Performance	
Total Attendance	28
Reference Services	
Technology Tutoring	10
Notary Public	Paused
Total Attendance	10

Reading & Activity Challenges

Career Readiness Challenge (Ongoing)

Monthly New Registrations	6
YTD Registrations	14
Lifetime Registrations	92

1000 Books Before Kindergarten (Ongoing)

Monthly New Registrations	4
YTD Registrations	18
Lifetime Registrations	820

Summer Boost Reading Challenges

(runs June 1 - July 31)

Month New Registrations	302
Total Registrations YTD	740
Challenge Completions	52

Total program attendees
 (in-library & outreach event attendance in June 2026.
 This count does not include reference services.) **1701**

