



West Fargo Public Library Board of Directors
Regular Meeting Agenda
West Fargo City Hall Commission Chambers
2515 6th St E, West Fargo
Thursday, May 14, 2026 5:00 PM
Watch live on YouTube

Meeting Items

1. Call to Order
2. Roll Call
3. Approve Order of Agenda
4. Public Comment

Members of the public will be allowed 2 minutes and 30 seconds to address the Library Board. Board of Directors will not take any official action during this comment period. Please sign up no later than 12 p.m. the day of the Library Board Meeting you wish to attend.

[Library Board Meeting Public Comment](#)

Consent Agenda - Approve the Following:

1. Approval of Minutes – April 9, 2026
2. Approval of Financial Reports

Regular Agenda

Old Business

New Business

1. 2025 Annual Report (**ACTION**)
2. Preliminary Budget (**ACTION**)
3. Director's Report
4. Adjourn



West Fargo Public Library Board of Directors Meeting

West Fargo City Hall Commission Chambers

2515 6th St E, West Fargo, ND

5 p.m. April 9, 2026

[YouTube recording](#)

Board Members Present: Liann Hanson, Commissioner Roben Anderson, Tyler Erickson, Tony Stukel, Sara Westall

Board Member Absent: All Board members were present

Also Present: Library Director Jenna Kahly

I. Call to Order

Hanson called the meeting to order at 5 p.m.

II. Roll Call

III. Approve Order of the Agenda

Commissioner Anderson moved and Stukel seconded to approve the order of the agenda. No opposition. Motion carried.

IV. Public Comment

No members of the public signed up for comment.

V. Consent Agenda

Commissioner Anderson moved and Westall seconded to approve the consent agenda. No opposition. Motion carried.

- Approval of Minutes – March 12, 2026
- Approval of Financial Reports

Regular Agenda

Old Business

- No old business

New Business

VI. Approved Revised Circulation Policy (ACTION)

- Kahly presented the proposed changes to the Circulation Policy, specifically recommending the elimination of the existing \$1 replacement fee for lost or stolen library cards. This change aligns with one of the 2026 objectives outlined in the Strategic Plan. The removal of the replacement fee would positively impact on the quality of customer service and enhance access to the library for patrons. Hanson moved and Commissioner Anderson seconded to approve the revision of the Circulation Policy. No opposition. Motion carried.

VII. Q1 Strategic Plan Goals Update

- Kahly shared an update on progress made in the first quarter of 2026 toward the defined Strategic Plan goals. Some highlights included:
 - Working on Student Card program expansion to include all grades for the 2026 – 2027 school year
 - Ongoing public awareness campaigns and training to increase e-resource use, Satellite visits, and Library Card signups.
 - Catalog and label updates for World Language materials
 - Ongoing discussions with potential partners for a new library facility

VIII. Director's Report

Kahly provided updates about library operations in March. Highlights included:

- Financial information, like year-to-date expenditures at 18% and the revised timeline for the FY2027 budget process.
- Monthly usage statistics at both locations, including continued growth in physical and electronic circulation.
- Updates on current vacancies for a Youth Librarian and three Summer Interns. A new Library Assistant started April 1.
- Updates on recent youth programs, such as second-grade tours, and well-attended programs like storytime and Spring Break events.
- The March Madness Reading Challenge, which had a record of over 250 people participate.
- Updates on recent adult programs, such as the Seed Library, Monday Matinees, Dungeons and Dragons, and the return of Technology Tutoring.
- Highlights from the Public Library Association Conference in Minneapolis.
- News about a Library Vision Grant from the State Library which was awarded to the WFPL to cover expenses related to staff training for Clifton StrengthsFinder.

IX. Adjourn

Hanson moved to adjourn, Erickson seconded. No opposition. Motion carried at 5:30 p.m. The next meeting is May 14, 2026, at 5 p.m. at the West Fargo City Hall Commission Chambers.

CITY OF WEST FARGO, ND
 Revenue Budget vs. Actual
 For the Accounting Period: April 2026

Fund	Fund Description	Account	Account Description	Received		Estimated Revenue	Revenue to be Received
				Current Month	Received YTD		
7000	LIBRARY	310001	PROPERTY TAXES	48,681.82	1,912,437.22	2,544,185.00	631,747.78
7000	LIBRARY	310002	DISCOUNT PROPERTY TAXES	0.00	0.00	-106,856.00	-106,856.00
7000	LIBRARY	335600	STATE AID	0.00	0.00	44,626.00	44,626.00
7000	LIBRARY	360000	MISCELLANEOUS REVENUE	1,611.31	4,487.07	5,000.00	512.93
7000	LIBRARY	360100	SPONSORSHIPS	360.00	409.96	3,000.00	2,590.04
7000	LIBRARY	361000	INTEREST ON INVESTMENTS	0.00	37,692.81	142,113.00	104,420.19
7000	LIBRARY	363400	GRANTS	0.00	0.00	0.00	0.00
7000	LIBRARY	375000	DONATIONS	500.00	500.00	0.00	-500.00
7000	LIBRARY	383000	TRANSFER IN	0.00	0.00	0.00	0.00
				51,153.13	1,955,527.06	2,632,068.00	
					1,955,527.06	2,632,068.00	
					-	-	

Statement of Expenditure - Budget vs. Actual Report

For the Accounting Period: April 2026

Fund	Account	Object	Committed YTD	Current Appropriation	
7000 LIBRARY	411600 LIBRARY	110 PERMANENT EMP SALARIES	325,268.45	1,315,880.00	Payroll
7000 LIBRARY	411600 LIBRARY	114 PART TIME SALARIES	23,925.65	134,448.00	Payroll
7000 LIBRARY	411600 LIBRARY	220 SOCIAL SECURITY	25,524.50	110,686.00	Payroll
7000 LIBRARY	411600 LIBRARY	230 RETIREMENT	51,855.74	212,865.00	Payroll
7000 LIBRARY	411600 LIBRARY	240 WORKFORCE SAFETY INSURANCE	676.95	3,124.00	Payroll
7000 LIBRARY	411600 LIBRARY	250 UNEMPLOYMENT	0.00	500.00	Payroll
7000 LIBRARY	411600 LIBRARY	312 ATTORNEY	0.00	5,150.00	Professional
7000 LIBRARY	411600 LIBRARY	320 HEALTH INSURANCE	52,262.21	195,241.00	Payroll
7000 LIBRARY	411600 LIBRARY	340 EMPLOYEE DEVELOPMENT	6,591.30	12,950.00	Employee
7000 LIBRARY	411600 LIBRARY	356 TELEPHONE	565.71	3,044.00	Operations
7000 LIBRARY	411600 LIBRARY	360 PRINTING & MAILING PROJECTS	4,120.50	13,000.00	Promotions
7000 LIBRARY	411600 LIBRARY	387 MEDICAL/VACCINES	0.00	500.00	Employee
7000 LIBRARY	411600 LIBRARY	389 LEASE/RENTAL	64716.14	199211.00	Building
7000 LIBRARY	411600 LIBRARY	399 RECRUITMENT/EMPLOYMENT TESTING	0.00	3000.00	Employee
7000 LIBRARY	411600 LIBRARY	410 OFFICE SUPPLIES	957.58	15,750.00	Operations
7000 LIBRARY	411600 LIBRARY	418 PROFESSIONAL SERVICES	0.00	3,000.00	Professional
7000 LIBRARY	411600 LIBRARY	424 GAS AND OIL	54.26	2,000.00	vehicle
7000 LIBRARY	411600 LIBRARY	427 VEHICLES MAINTENANCE	0.00	1,200.00	vehicle
7000 LIBRARY	411600 LIBRARY	428 SERVICE AGREEMENTS-CONTRACTS	5,376.37	22,008.00	Operations
7000 LIBRARY	411600 LIBRARY	490 MISC	54.21	500.00	Operations
7000 LIBRARY	411600 LIBRARY	497 TECHNOLOGY	4,534.01	37,379.00	Operations
7000 LIBRARY	411600 LIBRARY	500 SUPPLIES	0.00	850.00	Operations
7000 LIBRARY	411600 LIBRARY	641 FURN & EQUIP-NON DEPRECIATED <\$5000	1,551.00	11,520.00	Operations
7000 LIBRARY	411600 LIBRARY	644 POSTAL METER RENT	0.00	2,772.00	Operations
7000 LIBRARY	411600 LIBRARY	648 PROFESSIONAL PUBLICATIONS	0.00	535.00	Employee
7000 LIBRARY	411600 LIBRARY	649 PROGRAMMING	810.59	16,000.00	Programming
7000 LIBRARY	411600 LIBRARY	650 E RESOURCES	17,708.13	44,065.00	Collections
7000 LIBRARY	411600 LIBRARY	662 BOOKS	24,370.16	112,324.00	Collections
7000 LIBRARY	411600 LIBRARY	663 MAGAZINES	4,572.07	4,850.00	Collections
7000 LIBRARY	411600 LIBRARY	664 AUDIO VIDEO	5,950.89	16,250.00	Collections
7000 LIBRARY	411600 LIBRARY	667 MEMBERSHIPS	1,549.00	4,320.00	Employee
7000 LIBRARY	411600 LIBRARY	669 INSURANCE	0.00	6,056.00	Building
7000 LIBRARY	411600 LIBRARY	672 EMERGENCY MEDICAL SUPPLIES	108.72	0.00	Operations
7000 LIBRARY	411600 LIBRARY	680 Library of Things	129.98	4,500.00	Collections
7000 LIBRARY	411600 LIBRARY	689 PROMOTIONAL ACTIVITIES	254.21	13,680.00	Promotions
7000 LIBRARY	411600 LIBRARY	740 SERVICE CHARGES	561.95	1,750.00	Operations
7000 LIBRARY	411600 LIBRARY	880 COST ALLOCATIONS	17,817.68	53,450.00	vehicle
7000 LIBRARY	411600 LIBRARY	890 TRANSFERS OUT	0.00	10,000.00	CIP
7000 LIBRARY	411600 LIBRARY	901 CATALOGING	0.00	3,210.00	Collections
7000 LIBRARY	411600 LIBRARY	994 ODIN	29249.20	34,500.00	Collections
			671,117.16	2,632,068.00	
			3,068,112.94	(128,101.03)	
			(2,396,995.78)	2,760,169.03	

Funds 7000-7000, Accounts 411600-411600, AND ACCOUNT=411600

Fund/Account/ Doc/Line #	Check	Description	Invoice Invoice Date	End Month/ Amount	Year to Date/ Period	Budget/ Vendor	Available Appropriation	%
7000 LIBRARY								
411600 LIBRARY								
110 PERMANENT EMP SALARIES								
JV 6355138		Payroll 03/06/2026	/ /	42,278.47	3/26			
JV 6377127		Payroll 03/20/2026	/ /	42,278.47	3/26			
		Object Total:		84,556.94	230,756.75	1,315,880.00	1,085,123.25	18%
114 PART TIME SALARIES								
JV 6355139		Payroll 03/06/2026	/ /	3,177.41	3/26			
JV 6377128		Payroll 03/20/2026	/ /	3,453.90	3/26			
		Object Total:		6,631.31	17,183.34	134,448.00	117,264.66	13%
220 SOCIAL SECURITY								
JV 6355140		Payroll 03/06/2026	/ /	3,316.99	3/26			
JV 6377129		Payroll 03/20/2026	/ /	3,338.16	3/26			
		Object Total:		6,655.15	18,099.45	110,686.00	92,586.55	16%
230 RETIREMENT								
JV 6355141		Payroll 03/06/2026	/ /	6,863.66	3/26			
JV 6377130		Payroll 03/20/2026	/ /	6,848.98	3/26			
		Object Total:		13,712.64	36,781.00	212,865.00	176,084.00	17%
240 WORKFORCE SAFETY INSURANCE								
CL 131177 23 -94022 Library		UB11M2L3W2 02/12/26		676.95	3/26	571 ND WORKFORCE SAFETY &		
		Object Total:		676.95	676.95	3,124.00	2,447.05	22%
245 CORPORATE EDUCATION (DO NOT USE)								
		Object Total:	/ /	0.00	0.00	0.00	0.00	%
250 UNEMPLOYMENT								
		Object Total:	/ /	0.00	0.00	500.00	500.00	%
312 ATTORNEY								
		Object Total:	/ /	0.00	0.00	5,150.00	5,150.00	%
320 HEALTH INSURANCE								
JV 6355142		Payroll 03/06/2026	/ /	6,989.79	3/26			
JV 6377131		Payroll 03/20/2026	/ /	6,989.58	3/26			
		Object Total:		13,979.37	37,505.72	195,241.00	157,735.28	19%
321 PROPERTY INSURANCE								
		Object Total:	/ /	0.00	0.00	0.00	0.00	%
333 BUILDING RENTAL (DO NOT USE)								
		Object Total:	/ /	0.00	0.00	0.00	0.00	%
340 EMPLOYEE DEVELOPMENT								
CC 1966 4		MARITZ AT&L ALA	999999 02/20/26	414.00	3/26	4576 VISA LIBRARY #3		
CC 1966 5		MARITZ AT&L ALA	999999 02/20/26	259.00	3/26	4576 VISA LIBRARY #3		
		Object Total:		673.00	2,586.06	12,950.00	10,363.94	20%
356 TELEPHONE								
CL 131184 31 -93945 Feb 2026 - library			02/08/26	188.59	3/26	3668 VERIZON WIRELESS		
		Object Total:		188.59	377.18	3,044.00	2,666.82	12%

Funds 7000-7000, Accounts 411600-411600, AND ACCOUNT=411600

Fund/Account/ Doc/Line #	Check	Description	Invoice Invoice	Date	End Month/ Amount	Year to Date/ Period	Budget/ Vendor	Available Appropriation	%
7000 LIBRARY									
411600 LIBRARY									
360 PRINTING & MAILING PROJECTS									
CC 1964	1	SHIPPING BOXES	3490	02/24/26	42.56	3/26	3161 VISA LIBRARY #1		
Object Total:					42.56		2,120.50	13,000.00	10,879.50 16%
387 MEDICAL/VACCINES									
Object Total:					0.00		0.00	500.00	500.00 %
389 LEASE/RENTAL									
CL 130885	2	-94173 Mar 2026 Lease - Satellite Lib		03/01/26	2,777.43	3/26	5229 AMB INVESTMENTS, LLC		
CL 131453	1	-93799 APRIL RENT		03/26/26	10,643.55	3/26	549 WF PUB SCHOOLS DIST #6		
Object Total:					13,420.98		50,906.49	199,211.00	148,304.51 26%
399 RECRUITMENT/EMPLOYMENT TESTING									
Object Total:					0.00		0.00	3,000.00	3,000.00 %
410 OFFICE SUPPLIES									
CC 1964	2	OFFICE SUPPLIES	3490	02/24/26	51.61	3/26	3161 VISA LIBRARY #1		
CC 1964	3	PUREWATER	999999	02/25/26	100.00	3/26	3161 VISA LIBRARY #1		
CL 131030	1	-94098 COPY PAPER/PAPER TOWELS		03/09/26	238.70	3/26	351 BUSINESS ESSENTIALS		
CL 131246	1	-93771 BATTERIES		03/10/26	12.33	3/26	3490 AMAZON CAPITAL SERVICES		
CL 131246	3	-93771 CREDIT(WALL MOUNTED REMOTE)		03/05/26	-26.58	3/26	3490 AMAZON CAPITAL SERVICES		
Object Total:					376.06		700.42	15,750.00	15,049.58 4%
418 PROFESSIONAL SERVICES									
Object Total:					0.00		0.00	3,000.00	3,000.00 %
420 OPERATION & MAINTENANCE									
Object Total:					0.00		0.00	0.00	0.00 %
424 GAS AND OIL									
JV 6354	12	Feb fuel usage allocation		/ /	27.45	3/26			
Object Total:					27.45		47.86	2,000.00	1,952.14 2%
427 VEHICLES MAINTENANCE									
Object Total:					0.00		0.00	1,200.00	1,200.00 %
428 SERVICE AGREEMENTS-CONTRACTS									
CL 130958	1	-94136 LEASE FOR LIBRARY PRINTERS		02/25/26	714.62	3/26	5349 MARCO TECHNOLOGIES, LLC		
CL 131088	1	-94066 LEASE FOR POSTAGE MACHINE		03/05/26	231.00	3/26	384 PITNEY BOWES GLOBAL		
Object Total:					945.62		4,607.20	22,008.00	17,400.80 21%
490 MISC									
CL 130959	1	118267 REPLACEMENT BOOK COST		02/17/26	7.20	3/26	5721 MCVILLE COMMUNITY LIBRARY		
RV 10413	1	Damaged Book Reimbursement	Electronic	/ /	-34.99	3/26			
Object Total:					-27.79		54.21	500.00	445.79 11%

Funds 7000-7000, Accounts 411600-411600, AND ACCOUNT=411600

Fund/Account/ Doc/Line #	Check	Description	Invoice	Invoice Date	End Month/ Amount	Year to Date/ Period	Budget/ Vendor	Available Appropriation	%
7000 LIBRARY									
411600 LIBRARY									
497 TECHNOLOGY									
CC 1965 1		GOOGLE ONE	999999	02/11/26	19.99	3/26	3162 VISA LIBRARY #2		
CL 130955 1	-94139	MOBILE PRNT RNWAL 6/26-5/27		03/01/26	633.94	3/26	2089 ENVISIONWARE, INC		
		Object Total:			653.93		4,024.78	37,379.00	33,354.22 11%
500 SUPPLIES									
		Object Total:		/ /	0.00		0.00	850.00	850.00 %
640 FURNITURE & EQUIPMENT (DO NOT USE)									
		Object Total:		/ /	0.00		0.00	0.00	0.00 %
641 FURN & EQUIP-NON DEPRECIATED <\$5000									
		Object Total:		/ /	0.00		0.00	11,520.00	11,520.00 %
644 POSTAL METER RENT									
		Object Total:		/ /	0.00		0.00	2,772.00	2,772.00 %
648 PROFESSIONAL PUBLICATIONS									
		Object Total:		/ /	0.00		0.00	535.00	535.00 %
649 PROGRAMMING									
CC 1966 2		PROGRAMMING SUPPLIES	3701	02/05/26	12.97	3/26	4576 VISA LIBRARY #3		
CL 131246 2	-93771	YOUTH PROGRAMMING SUPPLIES		03/13/26	195.64	3/26	3490 AMAZON CAPITAL SERVICES		
		Object Total:			208.61		780.61	16,000.00	15,219.39 5%
650 E RESOURCES									
CL 130956 1	-94138	EBOOK		02/26/26	1,329.47	3/26	2126 OVERDRIVE, INC		
CL 130956 2	-94138	AUDIOBOOK		02/26/26	1,208.58	3/26	2126 OVERDRIVE, INC		
CL 131451 1	-93801	EBOOKS		03/20/26	656.68	3/26	2126 OVERDRIVE, INC		
CL 131451 2	-93801	AUDIOBOOKS		03/20/26	1,399.35	3/26	2126 OVERDRIVE, INC		
		Object Total:			4,594.08		15,053.85	44,065.00	29,011.15 34%
653 CAPITAL IMPROVEMENTS									
		Object Total:		/ /	0.00		0.00	0.00	0.00 %
661 POSTAGE/FREIGHT/SHIPPING									
		Object Total:		/ /	0.00		0.00	0.00	0.00 %
662 BOOKS									
CL 130957 1	-94137	BOOKS		02/25/26	239.55	3/26	5464 KNOWBUDDY RESOURCES		
CL 130961 1	-94135	BOOKS		02/25/26	167.93	3/26	5465 WILLOW LANE EDUCATION		
CL 131011 1	-94108	BOOKS		02/24/26	9.34	3/26	4592 INGRAM LIBRARY SERVICES		
CL 131011 2	-94108	BOOKS		02/24/26	91.43	3/26	4592 INGRAM LIBRARY SERVICES		
CL 131011 3	-94108	BOOKS		02/24/26	239.84	3/26	4592 INGRAM LIBRARY SERVICES		
CL 131011 4	-94108	BOOKS		02/24/26	24.22	3/26	4592 INGRAM LIBRARY SERVICES		
CL 131011 5	-94108	BOOKS		02/24/26	40.34	3/26	4592 INGRAM LIBRARY SERVICES		
CL 131011 6	-94108	BOOKS		02/24/26	30.07	3/26	4592 INGRAM LIBRARY SERVICES		
CL 131011 7	-94108	BOOKS		02/24/26	16.06	3/26	4592 INGRAM LIBRARY SERVICES		
CL 131011 8	-94108	BOOKS		02/24/26	30.20	3/26	4592 INGRAM LIBRARY SERVICES		

Funds 7000-7000, Accounts 411600-411600, AND ACCOUNT=411600

Fund/Account/ Doc/Line #	Check	Description	Invoice	Invoice Date	End Month/ Amount	Year to Date/ Period	Budget/ Vendor	Available Appropriation	%
7000 LIBRARY									
411600 LIBRARY									
CL 131011	9	-94108 BOOKS		02/24/26	45.34	3/26	4592 INGRAM LIBRARY SERVICES		
CL 131011	10	-94108 BOOKS		02/24/26	20.81	3/26	4592 INGRAM LIBRARY SERVICES		
CL 131011	11	-94108 BOOKS		02/24/26	54.57	3/26	4592 INGRAM LIBRARY SERVICES		
CL 131011	12	-94108 BOOKS		02/24/26	20.43	3/26	4592 INGRAM LIBRARY SERVICES		
CL 131011	13	-94108 BOOKS		02/25/26	12.76	3/26	4592 INGRAM LIBRARY SERVICES		
CL 131011	14	-94108 BOOKS		02/25/26	12.48	3/26	4592 INGRAM LIBRARY SERVICES		
CL 131011	15	-94108 BOOKS		02/25/26	28.54	3/26	4592 INGRAM LIBRARY SERVICES		
CL 131011	16	-94108 BOOKS		02/25/26	29.30	3/26	4592 INGRAM LIBRARY SERVICES		
CL 131011	17	-94108 BOOKS		02/25/26	17.00	3/26	4592 INGRAM LIBRARY SERVICES		
CL 131011	18	-94108 BOOKS		02/25/26	16.21	3/26	4592 INGRAM LIBRARY SERVICES		
CL 131011	19	-94108 BOOKS		02/25/26	25.63	3/26	4592 INGRAM LIBRARY SERVICES		
CL 131011	20	-94108 BOOKS		02/25/26	58.56	3/26	4592 INGRAM LIBRARY SERVICES		
CL 131011	21	-94108 BOOKS		02/25/26	56.20	3/26	4592 INGRAM LIBRARY SERVICES		
CL 131011	22	-94108 BOOKS		02/27/26	35.80	3/26	4592 INGRAM LIBRARY SERVICES		
CL 131011	23	-94108 BOOKS		02/27/26	27.73	3/26	4592 INGRAM LIBRARY SERVICES		
CL 131011	24	-94108 BOOKS		02/27/26	73.88	3/26	4592 INGRAM LIBRARY SERVICES		
CL 131011	25	-94108 BOOKS		02/27/26	19.43	3/26	4592 INGRAM LIBRARY SERVICES		
CL 131011	26	-94108 BOOKS		02/27/26	46.93	3/26	4592 INGRAM LIBRARY SERVICES		
CL 131011	27	-94108 BOOKS		02/27/26	15.62	3/26	4592 INGRAM LIBRARY SERVICES		
CL 131011	28	-94108 BOOKS		02/27/26	18.92	3/26	4592 INGRAM LIBRARY SERVICES		
CL 131011	29	-94108 BOOKS		02/27/26	17.83	3/26	4592 INGRAM LIBRARY SERVICES		
CL 131011	30	-94108 BOOKS		02/27/26	15.67	3/26	4592 INGRAM LIBRARY SERVICES		
CL 131011	31	-94108 BOOKS		02/27/26	29.75	3/26	4592 INGRAM LIBRARY SERVICES		
CL 131011	32	-94108 BOOKS		02/27/26	20.49	3/26	4592 INGRAM LIBRARY SERVICES		
CL 131011	33	-94108 BOOKS		03/03/26	26.82	3/26	4592 INGRAM LIBRARY SERVICES		
CL 131011	34	-94108 BOOKS		03/03/26	13.54	3/26	4592 INGRAM LIBRARY SERVICES		
CL 131011	35	-94108 BOOKS		03/03/26	28.28	3/26	4592 INGRAM LIBRARY SERVICES		
CL 131011	36	-94108 BOOKS		03/03/26	61.57	3/26	4592 INGRAM LIBRARY SERVICES		
CL 131011	37	-94108 BOOKS		03/03/26	72.52	3/26	4592 INGRAM LIBRARY SERVICES		
CL 131011	38	-94108 BOOKS		03/03/26	35.11	3/26	4592 INGRAM LIBRARY SERVICES		
CL 131011	39	-94108 BOOKS		03/03/26	20.93	3/26	4592 INGRAM LIBRARY SERVICES		
CL 131011	40	-94108 BOOKS		03/03/26	33.22	3/26	4592 INGRAM LIBRARY SERVICES		
CL 131011	41	-94108 BOOKS		03/05/26	22.77	3/26	4592 INGRAM LIBRARY SERVICES		
CL 131011	42	-94108 BOOKS		03/06/26	25.79	3/26	4592 INGRAM LIBRARY SERVICES		
CL 131011	43	-94108 BOOKS		03/06/26	86.50	3/26	4592 INGRAM LIBRARY SERVICES		
CL 131011	44	-94108 BOOKS		03/06/26	157.68	3/26	4592 INGRAM LIBRARY SERVICES		
CL 131011	45	-94108 BOOKS		03/06/26	34.40	3/26	4592 INGRAM LIBRARY SERVICES		
CL 131011	46	-94108 BOOKS		03/06/26	101.63	3/26	4592 INGRAM LIBRARY SERVICES		
CL 131011	47	-94108 BOOKS		03/06/26	12.87	3/26	4592 INGRAM LIBRARY SERVICES		
CL 131011	48	-94108 BOOKS		03/06/26	18.10	3/26	4592 INGRAM LIBRARY SERVICES		
CL 131011	49	-94108 BOOKS		03/06/26	56.53	3/26	4592 INGRAM LIBRARY SERVICES		
CL 131011	50	-94108 BOOKS		03/06/26	7.39	3/26	4592 INGRAM LIBRARY SERVICES		
CL 131011	51	-94108 BOOKS		03/06/26	271.84	3/26	4592 INGRAM LIBRARY SERVICES		
CL 131011	52	-94108 BOOKS		03/06/26	359.95	3/26	4592 INGRAM LIBRARY SERVICES		
CL 131011	53	-94108 BOOKS		03/06/26	96.82	3/26	4592 INGRAM LIBRARY SERVICES		
CL 131011	54	-94108 BOOKS		03/06/26	200.79	3/26	4592 INGRAM LIBRARY SERVICES		
CL 131011	55	-94108 BOOKS		03/11/26	12.68	3/26	4592 INGRAM LIBRARY SERVICES		
CL 131011	56	-94108 BOOKS		03/11/26	12.98	3/26	4592 INGRAM LIBRARY SERVICES		

Funds 7000-7000, Accounts 411600-411600, AND ACCOUNT=411600

Fund/Account/ Doc/Line #	Check	Description	Invoice	Invoice Date	End Month/ Amount	Year to Date/ Period	Budget/ Vendor	Available Appropriation	%
7000		LIBRARY							
411600		LIBRARY							
CL 131011	57	-94108 BOOKS		03/11/26	14.76	3/26	4592 INGRAM LIBRARY SERVICES		
CL 131011	58	-94108 BOOKS		03/11/26	28.70	3/26	4592 INGRAM LIBRARY SERVICES		
CL 131011	59	-94108 BOOKS		03/11/26	13.40	3/26	4592 INGRAM LIBRARY SERVICES		
CL 131011	60	-94108 BOOKS		03/11/26	45.44	3/26	4592 INGRAM LIBRARY SERVICES		
CL 131250	1	-93924 BOOKS		03/12/26	1,205.02	3/26	3109 LIBRARY IDEAS, LLC		
CL 131250	2	-93924 BOOK CREDIT		01/29/26	-48.36	3/26	3109 LIBRARY IDEAS, LLC		
CL 131253	1	-93921 JR NF BOOKS		03/20/26	474.04	3/26	3953 SMART APPLE MEDIA		
CL 131256	1	-93918 BOOKS		03/12/26	25.66	3/26	4592 INGRAM LIBRARY SERVICES		
CL 131256	2	-93918 BOOKS		03/12/26	14.04	3/26	4592 INGRAM LIBRARY SERVICES		
CL 131256	3	-93918 BOOKS		03/12/26	23.04	3/26	4592 INGRAM LIBRARY SERVICES		
CL 131256	4	-93918 BOOKS		03/12/26	1,120.89	3/26	4592 INGRAM LIBRARY SERVICES		
CL 131256	5	-93918 BOOKS		03/12/26	490.64	3/26	4592 INGRAM LIBRARY SERVICES		
CL 131256	6	-93918 BOOKS		03/12/26	854.46	3/26	4592 INGRAM LIBRARY SERVICES		
CL 131256	7	-93918 BOOKS		03/12/26	13.19	3/26	4592 INGRAM LIBRARY SERVICES		
CL 131256	8	-93918 BOOKS		03/12/26	17.51	3/26	4592 INGRAM LIBRARY SERVICES		
CL 131256	9	-93918 BOOKS		03/12/26	21.47	3/26	4592 INGRAM LIBRARY SERVICES		
CL 131256	10	-93918 BOOKS		03/12/26	22.77	3/26	4592 INGRAM LIBRARY SERVICES		
CL 131256	11	-93918 BOOKS		03/12/26	32.29	3/26	4592 INGRAM LIBRARY SERVICES		
CL 131256	12	-93918 BOOKS		03/12/26	18.86	3/26	4592 INGRAM LIBRARY SERVICES		
CL 131256	13	-93918 BOOKS		03/12/26	13.66	3/26	4592 INGRAM LIBRARY SERVICES		
CL 131256	14	-93918 BOOKS		03/12/26	28.92	3/26	4592 INGRAM LIBRARY SERVICES		
CL 131256	15	-93918 BOOKS		03/12/26	60.76	3/26	4592 INGRAM LIBRARY SERVICES		
CL 131256	16	-93918 BOOKS		03/12/26	45.84	3/26	4592 INGRAM LIBRARY SERVICES		
CL 131256	17	-93918 BOOKS		03/16/26	25.25	3/26	4592 INGRAM LIBRARY SERVICES		
CL 131256	18	-93918 BOOKS		03/16/26	20.95	3/26	4592 INGRAM LIBRARY SERVICES		
CL 131256	19	-93918 BOOKS		03/16/26	36.13	3/26	4592 INGRAM LIBRARY SERVICES		
CL 131256	20	-93918 BOOKS		03/16/26	12.51	3/26	4592 INGRAM LIBRARY SERVICES		
CL 131256	21	-93918 BOOKS		03/16/26	18.83	3/26	4592 INGRAM LIBRARY SERVICES		
CL 131256	22	-93918 BOOKS		03/16/26	15.08	3/26	4592 INGRAM LIBRARY SERVICES		
CL 131256	23	-93918 BOOKS		03/16/26	10.58	3/26	4592 INGRAM LIBRARY SERVICES		
CL 131256	24	-93918 BOOKS		03/16/26	15.66	3/26	4592 INGRAM LIBRARY SERVICES		
CL 131256	25	-93918 BOOKS		03/16/26	17.69	3/26	4592 INGRAM LIBRARY SERVICES		
CL 131256	26	-93918 BOOKS		03/16/26	27.03	3/26	4592 INGRAM LIBRARY SERVICES		
CL 131256	27	-93918 BOOKS		03/17/26	15.16	3/26	4592 INGRAM LIBRARY SERVICES		
CL 131256	28	-93918 BOOKS		03/17/26	16.24	3/26	4592 INGRAM LIBRARY SERVICES		
CL 131256	29	-93918 BOOKS		03/17/26	21.41	3/26	4592 INGRAM LIBRARY SERVICES		
CL 131256	30	-93918 BOOKS		03/17/26	21.17	3/26	4592 INGRAM LIBRARY SERVICES		
CL 131256	31	-93918 BOOKS		03/17/26	24.58	3/26	4592 INGRAM LIBRARY SERVICES		
CL 131256	32	-93918 BOOKS		03/17/26	22.09	3/26	4592 INGRAM LIBRARY SERVICES		
CL 131256	33	-93918 BOOKS		03/17/26	23.63	3/26	4592 INGRAM LIBRARY SERVICES		
CL 131256	34	-93918 BOOKS		03/18/26	10.32	3/26	4592 INGRAM LIBRARY SERVICES		
CL 131256	35	-93918 BOOKS		03/18/26	13.50	3/26	4592 INGRAM LIBRARY SERVICES		
CL 131256	36	-93918 BOOKS		03/18/26	20.12	3/26	4592 INGRAM LIBRARY SERVICES		
CL 131256	37	-93918 BOOKS		03/18/26	21.55	3/26	4592 INGRAM LIBRARY SERVICES		
CL 131256	38	-93918 BOOKS		03/18/26	25.22	3/26	4592 INGRAM LIBRARY SERVICES		
CL 131256	39	-93918 BOOKS		03/18/26	80.34	3/26	4592 INGRAM LIBRARY SERVICES		
CL 131256	40	-93918 BOOKS		03/18/26	70.11	3/26	4592 INGRAM LIBRARY SERVICES		
CL 131256	41	-93918 BOOKS		03/18/26	30.57	3/26	4592 INGRAM LIBRARY SERVICES		

Funds 7000-7000, Accounts 411600-411600, AND ACCOUNT=411600

Fund/Account/ Doc/Line #	Check	Description	Invoice	Invoice Date	End Month/ Amount	Year to Date/ Period	Budget/ Vendor	Available Appropriation	%
7000 LIBRARY									
411600 LIBRARY									
CL 131256	42	-93918 BOOKS		03/18/26	14.48	3/26	4592 INGRAM LIBRARY SERVICES		
CL 131256	43	-93918 BOOKS		03/18/26	67.54	3/26	4592 INGRAM LIBRARY SERVICES		
CL 131256	44	-93918 BOOKS		03/18/26	26.45	3/26	4592 INGRAM LIBRARY SERVICES		
CL 131256	45	-93918 BOOKS		03/18/26	24.24	3/26	4592 INGRAM LIBRARY SERVICES		
CL 131256	46	-93918 BOOKS		03/18/26	14.50	3/26	4592 INGRAM LIBRARY SERVICES		
CL 131256	47	-93918 BOOKS		03/18/26	11.66	3/26	4592 INGRAM LIBRARY SERVICES		
CL 131256	48	-93918 BOOKS		03/18/26	47.57	3/26	4592 INGRAM LIBRARY SERVICES		
CL 131256	49	-93918 BOOKS		03/19/26	212.53	3/26	4592 INGRAM LIBRARY SERVICES		
CL 131256	50	-93918 BOOKS		03/19/26	164.13	3/26	4592 INGRAM LIBRARY SERVICES		
CL 131256	51	-93918 BOOKS		03/19/26	18.89	3/26	4592 INGRAM LIBRARY SERVICES		
CL 131256	52	-93918 BOOKS		03/19/26	34.93	3/26	4592 INGRAM LIBRARY SERVICES		
CL 131256	53	-93918 BOOKS		03/19/26	33.34	3/26	4592 INGRAM LIBRARY SERVICES		
CL 131256	54	-93918 BOOKS		03/20/26	111.72	3/26	4592 INGRAM LIBRARY SERVICES		
CL 131256	55	-93918 BOOKS		03/20/26	64.57	3/26	4592 INGRAM LIBRARY SERVICES		
CL 131256	56	-93918 BOOKS		03/20/26	13.87	3/26	4592 INGRAM LIBRARY SERVICES		
CL 131256	57	-93918 BOOKS		03/20/26	13.89	3/26	4592 INGRAM LIBRARY SERVICES		
CL 131256	58	-93918 BOOKS		03/20/26	26.56	3/26	4592 INGRAM LIBRARY SERVICES		
CL 131256	59	-93918 BOOKS		03/20/26	11.08	3/26	4592 INGRAM LIBRARY SERVICES		
CL 131256	60	-93918 BOOKS		03/20/26	29.01	3/26	4592 INGRAM LIBRARY SERVICES		
CL 131256	61	-93918 BOOKS		03/20/26	12.10	3/26	4592 INGRAM LIBRARY SERVICES		
CL 131256	62	-93918 BOOKS		03/20/26	38.03	3/26	4592 INGRAM LIBRARY SERVICES		
CL 131256	63	-93918 BOOKS		03/20/26	21.12	3/26	4592 INGRAM LIBRARY SERVICES		
CL 131256	64	-93918 BOOKS		03/20/26	18.12	3/26	4592 INGRAM LIBRARY SERVICES		
CL 131256	65	-93918 BOOKS		03/20/26	21.82	3/26	4592 INGRAM LIBRARY SERVICES		
CL 131256	66	-93918 BOOKS		03/20/26	6.83	3/26	4592 INGRAM LIBRARY SERVICES		
CL 131256	67	-93918 BOOKS		03/20/26	39.24	3/26	4592 INGRAM LIBRARY SERVICES		
CL 131256	68	-93918 BOOKS		03/20/26	16.18	3/26	4592 INGRAM LIBRARY SERVICES		
CL 131256	69	-93918 BOOKS		03/20/26	13.17	3/26	4592 INGRAM LIBRARY SERVICES		
CL 131256	70	-93918 BOOKS		03/20/26	46.29	3/26	4592 INGRAM LIBRARY SERVICES		
CL 131256	71	-93918 BOOKS		03/20/26	67.29	3/26	4592 INGRAM LIBRARY SERVICES		
CL 131449	1	-93803 BOOKS		03/24/26	300.84	3/26	5197 LAKEVIEW BOOKS		
CL 131458	1	-93795 BOOKS		03/24/26	19.73	3/26	4592 INGRAM LIBRARY SERVICES		
CL 131458	2	-93795 BOOKS		03/24/26	31.14	3/26	4592 INGRAM LIBRARY SERVICES		
CL 131458	3	-93795 BOOKS		03/24/26	14.87	3/26	4592 INGRAM LIBRARY SERVICES		
CL 131458	4	-93795 BOOKS		03/24/26	14.21	3/26	4592 INGRAM LIBRARY SERVICES		
CL 131458	5	-93795 BOOKS		03/24/26	236.66	3/26	4592 INGRAM LIBRARY SERVICES		
CL 131458	6	-93795 BOOKS		03/23/26	20.26	3/26	4592 INGRAM LIBRARY SERVICES		
CL 131458	7	-93795 BOOKS		03/23/26	20.95	3/26	4592 INGRAM LIBRARY SERVICES		
CL 131458	8	-93795 BOOKS		03/23/26	14.10	3/26	4592 INGRAM LIBRARY SERVICES		
CL 131458	9	-93795 BOOKS		03/23/26	16.67	3/26	4592 INGRAM LIBRARY SERVICES		
CL 131458	10	-93795 BOOKS		03/23/26	29.34	3/26	4592 INGRAM LIBRARY SERVICES		
CL 131458	11	-93795 BOOKS		03/23/26	20.34	3/26	4592 INGRAM LIBRARY SERVICES		
CL 131458	12	-93795 BOOKS		03/23/26	38.02	3/26	4592 INGRAM LIBRARY SERVICES		
CL 131458	13	-93795 BOOKS		03/23/26	33.41	3/26	4592 INGRAM LIBRARY SERVICES		
CL 131458	14	-93795 BOOKS		03/23/26	22.77	3/26	4592 INGRAM LIBRARY SERVICES		
CL 131458	15	-93795 BOOK CREDIT		03/26/26	-16.44	3/26	4592 INGRAM LIBRARY SERVICES		
Object Total:					10,590.31	20,656.77	112,324.00	91,667.23	18%

Funds 7000-7000, Accounts 411600-411600, AND ACCOUNT=411600

Fund/Account/ Doc/Line #	Check	Description	Invoice Invoice	Date	End Month/ Amount	Year to Date/ Period	Budget/ Vendor	Available Appropriation	%
7000 LIBRARY									
411600 LIBRARY									
663 MAGAZINES									
			/ /						
Object Total:					0.00	4,572.07	4,850.00	277.93	94%
664 AUDIO VIDEO									
CL 131031	1	-94097 DVD		03/04/26	21.72	3/26	1854 MIDWEST TAPE		
CL 131031	2	-94097 DVD		03/04/26	65.91	3/26	1854 MIDWEST TAPE		
CL 131031	3	-94097 DVD		03/04/26	168.85	3/26	1854 MIDWEST TAPE		
CL 131031	4	-94097 DVD		03/04/26	310.14	3/26	1854 MIDWEST TAPE		
CL 131031	5	-94097 DVD		02/24/26	41.97	3/26	1854 MIDWEST TAPE		
CL 131031	6	-94097 DVD		02/24/26	40.44	3/26	1854 MIDWEST TAPE		
CL 131031	7	-94097 DVD		02/24/26	320.61	3/26	1854 MIDWEST TAPE		
CL 131031	8	-94097 DVD		03/11/26	27.72	3/26	1854 MIDWEST TAPE		
CL 131031	9	-94097 DVD		03/11/26	47.94	3/26	1854 MIDWEST TAPE		
CL 131031	10	-94097 DVD		03/11/26	268.47	3/26	1854 MIDWEST TAPE		
CL 131031	11	-94097 DVD		03/11/26	122.73	3/26	1854 MIDWEST TAPE		
CL 131031	12	-94097 DVD		03/11/26	32.26	3/26	1854 MIDWEST TAPE		
CL 131254	1	-93920 DVD		03/17/26	27.72	3/26	1854 MIDWEST TAPE		
CL 131254	2	-93920 DVD		03/17/26	20.22	3/26	1854 MIDWEST TAPE		
CL 131254	3	-93920 DVD		03/17/26	77.16	3/26	1854 MIDWEST TAPE		
CL 131454	1	-93798 DVDS		03/24/26	83.94	3/26	1854 MIDWEST TAPE		
CL 131454	2	-93798 DVDS		03/24/26	28.51	3/26	1854 MIDWEST TAPE		
Object Total:					1,706.31	3,520.83	16,250.00	12,729.17	22%
667 MEMBERSHIPS									
CC 1966	1	BREE MEMBERSHIPS	25	02/05/26	297.00	3/26	4576 VISA LIBRARY #3		
CC 1966	3	ELLEN MEMBERSHIP	25	02/19/26	120.00	3/26	4576 VISA LIBRARY #3		
Object Total:					417.00	1,549.00	4,320.00	2,771.00	36%
668 PRINTING (DO NOT USE)									
			/ /						
Object Total:					0.00	0.00	0.00	0.00	%
669 INSURANCE									
			/ /						
Object Total:					0.00	0.00	6,056.00	6,056.00	%
672 EMERGENCY MEDICAL SUPPLIES									
CL 131252	1	-93922 MEDICAL SUPPLIES		03/16/26	65.68	3/26	756 NELCO FIRST AID		
Object Total:					65.68	108.72	0.00	-108.72	%
680 Library of Things									
CC 1965	2	MOBILE BEACON	999999	02/26/26	129.98	3/26	3162 VISA LIBRARY #2		
Object Total:					129.98	129.98	4,500.00	4,370.02	3%
689 PROMOTIONAL ACTIVITIES									
CC 1966	6	FACEBOOK	999999	02/28/26	56.99	3/26	4576 VISA LIBRARY #3		
Object Total:					56.99	150.68	13,680.00	13,529.32	1%
710 PRINCIPAL									
			/ /						
Object Total:					0.00	0.00	0.00	0.00	%

Funds 7000-7000, Accounts 411600-411600, AND ACCOUNT=411600

Fund/Account/ Doc/Line # Check	Description	Invoice Invoice Date	End Month/ Amount	Year to Date/ Period	Budget/ Vendor	Available Appropriation	%
7000 LIBRARY							
411600 LIBRARY							
720 INTEREST		/ /					
	Object Total:		0.00	0.00	0.00	0.00	%
724 CONSULTING/TESTING FEES (DO NOT USE)		/ /					
	Object Total:		0.00	0.00	0.00	0.00	%
740 SERVICE CHARGES							
JV 6394 1	FIBT TSYS/TRANSFIRST MAR	/ /	138.00	3/26			
	Object Total:		138.00	423.95	1,750.00	1,326.05	24%
864 FURN & EQUIP DEPRECIATED >\$5,000		/ /					
	Object Total:		0.00	0.00	0.00	0.00	%
870 CAPITALIZED ASSETS - OVER \$5,000		/ /					
	Object Total:		0.00	0.00	0.00	0.00	%
880 COST ALLOCATIONS							
JV 6352 16	March 2026 Cost Allocation	/ /	4,454.42	3/26			
	Object Total:		4,454.42	13,363.26	53,450.00	40,086.74	25%
890 TRANSFERS OUT		/ /					
	Object Total:		0.00	0.00	10,000.00	10,000.00	%
901 CATALOGING		/ /					
	Object Total:		0.00	0.00	3,210.00	3,210.00	%
994 ODIN		/ /					
	Object Total:		0.00	29,249.20	34,500.00	5,250.80	85%
	Account Total:		164,874.14	495,986.83	2,632,068.00	2,136,081.17	
	Fund Total:		164,874.14	495,986.83	2,632,068.00	2,136,081.17	

***Detail total may not match report total. The report total reflects the actual amount posting to the budget line. The detail includes all transactions that posted to the budget line during the period (including amounts that may have been closed).

Funds 7000-7000, Accounts 411600-411600, AND ACCOUNT=411600

Fund/Account/ Doc/Line # Check	Description	Invoice Invoice Date	Invoice Date	End Month/ Amount	Year to Date/ Period	Budget/ Vendor	Available Appropriation	%
7000 LI BRARY								
411600 LIBRARY								
110 PERMANENT EMP SALARIES								
JV 6395141	Payrol	04/03/2026	/ /	46,629.65	4/26			
JV 6419131	Payrol	04/17/2156	/ /	47,882.05	4/26			
Object Total:				94,511.70	325,268.45	1,315,880.00	990,611.55	25%
114 PART TIME SALARIES								
JV 6395142	Payrol	04/03/2026	/ /	3,152.40	4/26			
JV 6419132	Payrol	04/17/2157	/ /	3,589.91	4/26			
Object Total:				6,742.31	23,925.65	134,448.00	110,522.35	18%
220 SOCIAL SECURITY								
JV 6395143	Payrol	04/03/2026	/ /	3,647.93	4/26			
JV 6419133	Payrol	04/17/2158	/ /	3,777.12	4/26			
Object Total:				7,425.05	25,524.50	110,686.00	85,161.50	23%
230 RETIREMENT								
JV 6395144	Payrol	04/03/2026	/ /	7,337.91	4/26			
JV 6419134	Payrol	04/17/2159	/ /	7,736.83	4/26			
Object Total:				15,074.74	51,855.74	212,865.00	161,009.26	24%
240 WORKFORCE SAFETY INSURANCE								
Object Total:				0.00	676.95	3,124.00	2,447.05	22%
245 CORPORATE EDUCATION (DO NOT USE)								
Object Total:				0.00	0.00	0.00	0.00	%
250 UNEMPLOYMENT								
Object Total:				0.00	0.00	500.00	500.00	%
312 ATTORNEY								
Object Total:				0.00	0.00	5,150.00	5,150.00	%
320 HEALTH INSURANCE								
JV 6395145	Payrol	04/03/2026	/ /	7,006.48	4/26			
JV 6419135	Payrol	04/17/2160	/ /	7,750.01	4/26			
Object Total:				14,756.49	52,262.21	195,241.00	142,978.79	27%
321 PROPERTY INSURANCE								
Object Total:				0.00	0.00	0.00	0.00	%
333 BUILDING RENTAL (DO NOT USE)								
Object Total:				0.00	0.00	0.00	0.00	%
340 EMPLOYEE DEVELOPMENT								
CC 1989 2	STAFF GI	FTCARDS	3701	03/18/26	60.00	4/26	4576 VISA LIBRARY #3	
CC 1989 4	STAFF GI	FTCARDS	4097	03/18/26	60.00	4/26	4576 VISA LIBRARY #3	
CL 131606 1	118385	PLA TRAVEL		03/31/26	1,463.76	4/26	5636 BREE SCHMIDT	
		REIMBURSEMENT						
CL 131607 1	118413	PLA TRAVEL		04/07/26	994.74	4/26	2800 LAUREN NEPHEW	
		REIMBURSEMENT						
CL 131609 1	118410	PLA TRAVEL		03/31/26	203.00	4/26	5359 JENNA KAHLY	
		REIMBURSEMENT						
CL 131610 1	118396	PLA TRAVEL		04/06/26	229.00	4/26	3207 ELLEN ROSSOW	

Funds 7000-7000, Accounts 411600-411600, AND ACCOUNT=411600

Fund/Account/ Doc/Line #	Check	Description	Invoice Invoice Date	Invoice Date	End Month/ Amount	Year to Date/ Period	Budget/ Vendor	Available Appropriation	%			
7000 LI BRARY												
411600 LIBRARY												
CL 131968	1	118488	REIMBURSEMENT PLA TRAVEL REIMBURSEMENT	04/15/26	994.74	4/26	4156 SARAH DAVIS					
					Object Total:			4,005.24	6,591.30	12,950.00	6,358.70	51%
CL 131681	31	-93669	356 TELEPHONE march 2026 - library	03/08/26	188.53	4/26	3668 VERI ZON WI RELESS					
					Object Total:			188.53	565.71	3,044.00	2,478.29	19%
CL 131728	1	-93640	360 PRINTING & MAILING PROJECTS POSTAGE REFILL ACCT#43560960	04/17/26	2,000.00	4/26	1483 PITNEY BOWES BANK INC -					
					Object Total:			2,000.00	4,120.50	13,000.00	8,879.50	32%
387 MEDICAL/VACCINES												
					Object Total:			0.00	0.00	500.00	500.00	%
CC 1987	1		389 LEASE/RENTAL CREATIVE CLOUD PRO SUBSCRIP	03/05/26	388.67	4/26	3161 VISA LIBRARY #1					
CL 131439	2	-93957	Apr 2026 Lease - Satellite Lib	04/01/26	2,777.43	4/26	5229 AMB INVESTMENTS, LLC					
CL 131967	1	-93446	MAY RENT	04/17/26	10,643.55	4/26	549 WF PUB SCHOOLS DIST #6					
					Object Total:			13,809.65	64,716.14	199,211.00	134,494.86	32%
399 RECRUITMENT/EMPLOYMENT TESTING												
					Object Total:			0.00	0.00	3,000.00	3,000.00	%
410 OFFICE SUPPLIES												
CC 1987	2		BED BUG SUPPLIES	03/09/26	51.29	4/26	3161 VISA LIBRARY #1					
CC 1987	3		AA BATTERIES	03/12/26	19.95	4/26	3161 VISA LIBRARY #1					
CC 1987	4		REPLC BATTERY/FOLDERS	03/12/26	38.76	4/26	3161 VISA LIBRARY #1					
CC 1987	5		LEASE FOR WATER MACHINES	03/25/26	100.00	4/26	3161 VISA LIBRARY #1					
CL 131612	2	-93608	ERGO COMPUTER STAND	04/04/26	29.99	4/26	3490 AMAZON CAPITAL SERVICES					
CL 131614	1	-93701	FILE FOLDERS	04/01/26	17.17	4/26	351 BUSINESS ESSENTIALS					
					Object Total:			257.16	957.58	15,750.00	14,792.42	6%
418 PROFESSIONAL SERVICES												
					Object Total:			0.00	0.00	3,000.00	3,000.00	%
420 OPERATION & MAINTENANCE												
					Object Total:			0.00	0.00	0.00	0.00	%
424 GAS AND OIL												
JV 6422	12		Mar fuel usage allocation	/ /	6.40	4/26						
					Object Total:			6.40	54.26	2,000.00	1,945.74	3%

Funds 7000-7000, Accounts 411600-411600, AND ACCOUNT=411600

Fund/Account/ Doc/Line # Check	Description	Invoice Invoice Date	End Month/ Amount	Year to Date/ Period	Budget/ Vendor	Available Appropriation	%
7000 LI BRARY 411600 LIBRARY 427 VEHICLES MAINTENANCE		/ /					
		Object Total:	0.00	0.00	1,200.00	1,200.00	%
428 SERVICE AGREEMENTS-CONTRACTS CL 131613 1 -93702 PRINTER USAGE/LEASE		03/28/26	769.17	4/26 5349	MARCO TECHNOLOGIES, LLC		
		Object Total:	769.17	5,376.37	22,008.00	16,631.63	24%
490 MISC		/ /					
		Object Total:	0.00	54.21	500.00	445.79	11%
497 TECHNOLOGY CL 131612 1 -93608 ERGO KEYBOARD, MOUSE; HEADPHONES		04/04/26	509.23	4/26 3490	AMAZON CAPITAL SERVICES		
		Object Total:	509.23	4,534.01	37,379.00	32,844.99	12%
500 SUPPLIES		/ /					
		Object Total:	0.00	0.00	850.00	850.00	%
640 FURNITURE & EQUIPMENT (DO NOT USE)		/ /					
		Object Total:	0.00	0.00	0.00	0.00	%
641 FURN & EQUIP-NON DEPRECIATED <\$5000 CL 131920 1 -93430 Library furniture		04/28/26	1,551.00	4/26 5739	MCLAUGHLIN AUCTIONEERS		
		Object Total:	1,551.00	1,551.00	11,520.00	9,969.00	13%
644 POSTAL METER RENT		/ /					
		Object Total:	0.00	0.00	2,772.00	2,772.00	%
648 PROFESSIONAL PUBLICATIONS		/ /					
		Object Total:	0.00	0.00	535.00	535.00	%
649 PROGRAMMING CC 1988 1 SEED LIBRARY		4209 03/06/26	29.98	4/26 3162	VISA LIBRARY #2		
		Object Total:	29.98	810.59	16,000.00	15,189.41	5%
650 E RESOURCES CL 131966 1 -93447 EBOOK CL 131966 2 -93447 AUDIOBOOK CL 131966 3 -93447 CREDIT		04/21/26 04/21/26 04/21/26	1,103.30 1,653.78 -102.80	4/26 2126 4/26 2126 4/26 2126	OVERDRIVE, INC OVERDRIVE, INC OVERDRIVE, INC		
		Object Total:	2,654.28	17,708.13	44,065.00	26,356.87	40%
653 CAPITAL IMPROVEMENTS		/ /					
		Object Total:	0.00	0.00	0.00	0.00	%
661 POSTAGE/FREIGHT/SHIPPING		/ /					
		Object Total:	0.00	0.00	0.00	0.00	%

Funds 7000-7000, Accounts 411600-411600, AND ACCOUNT=411600

Fund/Account/ Doc/Line #	Check	Description	Invoice Invoice Date	End Month/ Amount	Year to Date/ Period	Budget/ Vendor	Available Appropriation	%
7000 LI BRARY								
411600 LI BRARY								
662 BOOKS								
CL 131731 1	-93637	BOOKS	03/04/26	22.77	4/26	4592 INGRAM LI BRARY	SERVI CES	
CL 131731 2	-93637	BOOKS	03/10/26	13.37	4/26	4592 INGRAM LI BRARY	SERVI CES	
CL 131731 3	-93637	BOOKS	03/10/26	30.22	4/26	4592 INGRAM LI BRARY	SERVI CES	
CL 131731 4	-93637	BOOKS	03/10/26	38.06	4/26	4592 INGRAM LI BRARY	SERVI CES	
CL 131731 5	-93637	BOOKS	03/10/26	65.15	4/26	4592 INGRAM LI BRARY	SERVI CES	
CL 131731 6	-93637	BOOKS	03/10/26	69.99	4/26	4592 INGRAM LI BRARY	SERVI CES	
CL 131731 7	-93637	BOOKS	03/10/26	17.80	4/26	4592 INGRAM LI BRARY	SERVI CES	
CL 131731 8	-93637	BOOKS	03/10/26	31.73	4/26	4592 INGRAM LI BRARY	SERVI CES	
CL 131731 9	-93637	BOOKS	03/10/26	33.10	4/26	4592 INGRAM LI BRARY	SERVI CES	
CL 131731 10	-93637	BOOKS	03/10/26	22.77	4/26	4592 INGRAM LI BRARY	SERVI CES	
CL 131731 11	-93637	BOOKS	03/26/26	13.50	4/26	4592 INGRAM LI BRARY	SERVI CES	
CL 131731 12	-93637	BOOKS	03/26/26	19.94	4/26	4592 INGRAM LI BRARY	SERVI CES	
CL 131731 13	-93637	BOOKS	03/26/26	23.18	4/26	4592 INGRAM LI BRARY	SERVI CES	
CL 131731 14	-93637	BOOKS	03/26/26	18.69	4/26	4592 INGRAM LI BRARY	SERVI CES	
CL 131731 15	-93637	BOOKS	03/26/26	12.69	4/26	4592 INGRAM LI BRARY	SERVI CES	
CL 131731 16	-93637	BOOKS	03/26/26	13.86	4/26	4592 INGRAM LI BRARY	SERVI CES	
CL 131731 17	-93637	BOOKS	03/26/26	48.34	4/26	4592 INGRAM LI BRARY	SERVI CES	
CL 131731 18	-93637	BOOKS	03/26/26	193.59	4/26	4592 INGRAM LI BRARY	SERVI CES	
CL 131731 19	-93637	BOOKS	03/26/26	21.66	4/26	4592 INGRAM LI BRARY	SERVI CES	
CL 131731 20	-93637	BOOKS	03/26/26	369.82	4/26	4592 INGRAM LI BRARY	SERVI CES	
CL 131731 21	-93637	BOOKS	03/27/26	37.12	4/26	4592 INGRAM LI BRARY	SERVI CES	
CL 131731 22	-93637	BOOKS	03/27/26	14.87	4/26	4592 INGRAM LI BRARY	SERVI CES	
CL 131731 23	-93637	BOOKS	03/27/26	13.41	4/26	4592 INGRAM LI BRARY	SERVI CES	
CL 131731 24	-93637	BOOKS	03/27/26	21.82	4/26	4592 INGRAM LI BRARY	SERVI CES	
CL 131731 25	-93637	BOOKS	03/27/26	13.54	4/26	4592 INGRAM LI BRARY	SERVI CES	
CL 131731 26	-93637	BOOKS	03/30/26	14.10	4/26	4592 INGRAM LI BRARY	SERVI CES	
CL 131731 27	-93637	BOOKS	03/30/26	55.89	4/26	4592 INGRAM LI BRARY	SERVI CES	
CL 131731 28	-93637	BOOKS	03/30/26	13.27	4/26	4592 INGRAM LI BRARY	SERVI CES	
CL 131731 29	-93637	BOOKS	03/30/26	528.01	4/26	4592 INGRAM LI BRARY	SERVI CES	
CL 131731 30	-93637	BOOKS	03/31/26	20.06	4/26	4592 INGRAM LI BRARY	SERVI CES	
CL 131731 31	-93637	BOOKS	03/31/26	13.46	4/26	4592 INGRAM LI BRARY	SERVI CES	
CL 131731 32	-93637	BOOKS	03/31/26	21.29	4/26	4592 INGRAM LI BRARY	SERVI CES	
CL 131731 33	-93637	BOOKS	03/31/26	1,153.53	4/26	4592 INGRAM LI BRARY	SERVI CES	
CL 131731 34	-93637	BOOKS	03/31/26	11.37	4/26	4592 INGRAM LI BRARY	SERVI CES	
CL 131731 35	-93637	BOOKS	03/31/26	52.40	4/26	4592 INGRAM LI BRARY	SERVI CES	
CL 131731 36	-93637	BOOKS	04/01/26	78.53	4/26	4592 INGRAM LI BRARY	SERVI CES	
CL 131731 37	-93637	BOOKS	04/01/26	16.60	4/26	4592 INGRAM LI BRARY	SERVI CES	
CL 131731 38	-93637	BOOKS	04/01/26	26.57	4/26	4592 INGRAM LI BRARY	SERVI CES	
CL 131731 39	-93637	BOOKS	04/01/26	21.71	4/26	4592 INGRAM LI BRARY	SERVI CES	
CL 131731 40	-93637	BOOKS	04/01/26	10.48	4/26	4592 INGRAM LI BRARY	SERVI CES	
CL 131731 41	-93637	BOOKS	04/01/26	22.62	4/26	4592 INGRAM LI BRARY	SERVI CES	
CL 131731 42	-93637	BOOKS	04/01/26	18.78	4/26	4592 INGRAM LI BRARY	SERVI CES	
CL 131731 43	-93637	BOOKS	04/01/26	18.56	4/26	4592 INGRAM LI BRARY	SERVI CES	
CL 131731 44	-93637	BOOKS	04/01/26	17.38	4/26	4592 INGRAM LI BRARY	SERVI CES	
CL 131731 45	-93637	BOOKS	04/02/26	17.16	4/26	4592 INGRAM LI BRARY	SERVI CES	
CL 131731 46	-93637	BOOKS	04/02/26	24.78	4/26	4592 INGRAM LI BRARY	SERVI CES	
CL 131731 47	-93637	BOOKS	04/03/26	16.37	4/26	4592 INGRAM LI BRARY	SERVI CES	

Funds 7000-7000, Accounts 411600-411600, AND ACCOUNT=411600

Fund/Account/ Doc/Line #	Check	Description	Invoice Invoice Date	End Month/ Amount	Year to Date/ Period	Budget/ Vendor	Available Appropriation	%
7000 LI BRARY								
411600 LIBRARY								
CL 131731 48	-93637	BOOKS	04/03/26	55.86	4/26	4592 INGRAM LI BRARY	SERVI CES	
CL 131731 49	-93637	BOOKS	04/03/26	19.58	4/26	4592 INGRAM LI BRARY	SERVI CES	
CL 131731 50	-93637	BOOKS	04/03/26	51.09	4/26	4592 INGRAM LI BRARY	SERVI CES	
CL 131731 51	-93637	BOOKS	04/03/26	13.34	4/26	4592 INGRAM LI BRARY	SERVI CES	
CL 131731 52	-93637	BOOKS	04/03/26	55.11	4/26	4592 INGRAM LI BRARY	SERVI CES	
CL 131731 53	-93637	BOOKS	04/03/26	19.99	4/26	4592 INGRAM LI BRARY	SERVI CES	
CL 131731 54	-93637	BOOKS	04/03/26	15.92	4/26	4592 INGRAM LI BRARY	SERVI CES	
CL 131731 55	-93637	BOOKS	04/03/26	268.22	4/26	4592 INGRAM LI BRARY	SERVI CES	
CL 131731 56	-93637	BOOKS	04/07/26	20.31	4/26	4592 INGRAM LI BRARY	SERVI CES	
CL 131731 57	-93637	BOOKS	04/07/25	17.31	4/26	4592 INGRAM LI BRARY	SERVI CES	
CL 131731 58	-93637	BOOKS	04/07/26	33.48	4/26	4592 INGRAM LI BRARY	SERVI CES	
CL 131731 59	-93637	BOOKS	04/07/26	38.86	4/26	4592 INGRAM LI BRARY	SERVI CES	
CL 131731 60	-93637	BOOKS	04/07/26	94.24	4/26	4592 INGRAM LI BRARY	SERVI CES	
CL 131731 61	-93637	BOOKS	04/07/26	18.94	4/26	4592 INGRAM LI BRARY	SERVI CES	
CL 131731 62	-93637	BOOKS	04/07/26	51.63	4/26	4592 INGRAM LI BRARY	SERVI CES	
CL 131731 63	-93637	BOOKS	04/07/26	15.95	4/26	4592 INGRAM LI BRARY	SERVI CES	
CL 131731 64	-93637	BOOKS	04/07/26	19.17	4/26	4592 INGRAM LI BRARY	SERVI CES	
CL 131731 65	-93637	BOOKS	04/07/26	22.40	4/26	4592 INGRAM LI BRARY	SERVI CES	
CL 131731 66	-93637	BOOKS	04/08/26	20.37	4/26	4592 INGRAM LI BRARY	SERVI CES	
CL 131731 67	-93637	BOOKS	04/08/26	64.48	4/26	4592 INGRAM LI BRARY	SERVI CES	
CL 131731 68	-93637	BOOKS	04/08/26	15.78	4/26	4592 INGRAM LI BRARY	SERVI CES	
CL 131731 69	-93637	BOOKS	04/08/26	110.50	4/26	4592 INGRAM LI BRARY	SERVI CES	
CL 131731 70	-93637	BOOKS	04/08/26	12.90	4/26	4592 INGRAM LI BRARY	SERVI CES	
CL 131731 71	-93637	BOOKS	04/08/26	26.94	4/26	4592 INGRAM LI BRARY	SERVI CES	
CL 131731 72	-93637	BOOKS	04/10/26	24.23	4/26	4592 INGRAM LI BRARY	SERVI CES	
CL 131731 73	-93637	BOOKS	04/10/26	15.43	4/26	4592 INGRAM LI BRARY	SERVI CES	
CL 131731 74	-93637	BOOKS	04/10/26	32.24	4/26	4592 INGRAM LI BRARY	SERVI CES	
CL 131731 75	-93637	BOOKS	04/10/26	45.93	4/26	4592 INGRAM LI BRARY	SERVI CES	
CL 131731 76	-93637	BOOKS	04/10/26	27.52	4/26	4592 INGRAM LI BRARY	SERVI CES	
CL 131731 77	-93637	BOOKS	04/10/26	60.39	4/26	4592 INGRAM LI BRARY	SERVI CES	
CL 131731 78	-93637	BOOKS	04/10/26	20.61	4/26	4592 INGRAM LI BRARY	SERVI CES	
CL 131731 79	-93637	BOOKS	04/10/26	28.37	4/26	4592 INGRAM LI BRARY	SERVI CES	
CL 131731 80	-93637	BOOKS	04/10/26	43.68	4/26	4592 INGRAM LI BRARY	SERVI CES	
CL 131731 81	-93637	BOOKS	04/10/26	56.26	4/26	4592 INGRAM LI BRARY	SERVI CES	
CL 131731 82	-93637	BOOKS	04/10/26	38.63	4/26	4592 INGRAM LI BRARY	SERVI CES	
CL 131731 83	-93637	BOOKS	04/10/26	19.45	4/26	4592 INGRAM LI BRARY	SERVI CES	
CL 131731 84	-93637	BOOKS	04/10/26	22.77	4/26	4592 INGRAM LI BRARY	SERVI CES	
CL 131731 85	-93637	BOOK CREDIT	03/05/26	-1.74	4/26	4592 INGRAM LI BRARY	SERVI CES	
JV 6418 1		Recl ass CL 131250	/ /	-1,156.66	4/26			
			Object Total:	3,713.39	24,370.16	112,324.00	87,953.84	22%
663 MAGAZI NES			/ /					
			Object Total:	0.00	4,572.07	4,850.00	277.93	94%

Funds 7000-7000, Accounts 411600-411600, AND ACCOUNT=411600

Fund/Account/ Doc/Line #	Check	Description	Invoice Invoice	Date	End Month/ Amount	Year to Date/ Period	Budget/ Vendor	Available Appropriation	%
7000 LI BRARY									
411600 LIBRARY									
664 AUDIO VIDEO									
CL 131717	1	-93647 DVD		04/07/26	71.16	4/26	1854 MI DWEST TAPE		
CL 131717	2	-93647 DVD		03/31/26	32.26	4/26	1854 MI DWEST TAPE		
CL 131717	3	-93647 DVD		03/31/26	17.97	4/26	1854 MI DWEST TAPE		
CL 131717	4	-93647 DVD		04/07/26	223.84	4/26	1854 MI DWEST TAPE		
CL 131717	5	-93647 DVD		04/07/26	125.91	4/26	1854 MI DWEST TAPE		
CL 131717	6	-93647 DVD		03/31/26	59.53	4/26	1854 MI DWEST TAPE		
CL 131717	7	-93647 DVD		03/31/26	180.54	4/26	1854 MI DWEST TAPE		
CL 131726	1	-93642 VOX		02/24/26	48.36	4/26	3109 LI BRARY IDEAS, LLC		
CL 131969	1	-93445 DVD		04/15/26	68.91	4/26	1854 MI DWEST TAPE		
CL 131969	2	-93445 DVD		04/15/26	33.28	4/26	1854 MI DWEST TAPE		
CL 131969	3	-93445 DVD		04/21/26	77.91	4/26	1854 MI DWEST TAPE		
CL 131969	4	-93445 DVD		04/21/26	23.97	4/26	1854 MI DWEST TAPE		
CL 131969	5	-93445 DVD		04/21/26	55.44	4/26	1854 MI DWEST TAPE		
CL 131969	6	-93445 DVD		04/28/26	46.03	4/26	1854 MI DWEST TAPE		
CL 131969	7	-93445 DVD		04/28/26	208.29	4/26	1854 MI DWEST TAPE		
JV 6418	2	Recl ass CL 131250		/ /	1,156.66	4/26			
			Object Total:		2,430.06	5,950.89	16,250.00	10,299.11	37%
667 MEMBERSHI PS									
			Object Total:	/ /	0.00	1,549.00	4,320.00	2,771.00	36%
668 PRINTING (DO NOT USE)									
			Object Total:	/ /	0.00	0.00	0.00	0.00	%
669 INSURANCE									
			Object Total:	/ /	0.00	0.00	6,056.00	6,056.00	%
672 EMERGENCY MEDICAL SUPPLIES									
			Object Total:	/ /	0.00	108.72	0.00	-108.72	%
680 Li brary of Things									
			Object Total:	/ /	0.00	129.98	4,500.00	4,370.02	3%
689 PROMOTIONAL ACTIVITIES									
CC 1989	1	SUPERFAN GI FT CARD	4209	03/18/26	30.00	4/26	4576 VISA LI BRARY #3		
CC 1989	3	SUPERFAN GI FT CARDS	3701	03/18/26	30.00	4/26	4576 VISA LI BRARY #3		
CC 1989	5	MARCH ADVERTISING	999999	03/31/26	43.53	4/26	4576 VISA LI BRARY #3		
			Object Total:		103.53	254.21	13,680.00	13,425.79	2%
710 PRINCIPAL									
			Object Total:	/ /	0.00	0.00	0.00	0.00	%
720 INTEREST									
			Object Total:	/ /	0.00	0.00	0.00	0.00	%

Funds 7000-7000, Accounts 411600-411600, AND ACCOUNT=411600

Fund/Account/ Doc/Line # Check	Description	Invoice Invoice Date	End Month/ Amount	Year to Date/ Period	Budget/ Vendor	Available Appropriation	%
7000 LI BRARY							
411600 LI BRARY							
724 CONSULTING/TESTING FEES (DO NOT USE)		/ /					
		Object Total:	0.00	0.00	0.00	0.00	%
740 SERVICE CHARGES							
JV 6439 1	FIBT TSYS/TRANSFIRST April	/ /	138.00	4/26			
		Object Total:	138.00	561.95	1,750.00	1,188.05	32%
864 FURN & EQUIP DEPRECIATED >\$5,000		/ /					
		Object Total:	0.00	0.00	0.00	0.00	%
870 CAPITALIZED ASSETS - OVER \$5,000		/ /					
		Object Total:	0.00	0.00	0.00	0.00	%
880 COST ALLOCATIONS							
JV 6435 16	April 2026 Cost Allocation	/ /	4,454.42	4/26			
		Object Total:	4,454.42	17,817.68	53,450.00	35,632.32	33%
890 TRANSFERS OUT		/ /					
		Object Total:	0.00	0.00	10,000.00	10,000.00	%
901 CATALOGING		/ /					
		Object Total:	0.00	0.00	3,210.00	3,210.00	%
994 ODIN		/ /					
		Object Total:	0.00	29,249.20	34,500.00	5,250.80	85%
		Account Total:	175,130.33	671,117.16	2,632,068.00	1,960,950.84	
		Fund Total:	175,130.33	671,117.16	2,632,068.00	1,960,950.84	

***Detail total may not match report total. The report total reflects the actual amount posting to the budget line. The detail includes all transactions that posted to the budget line during the period (including amounts that may have been closed).

Combi ned Funds

		----- Current Year -----				
Account Object	Description	Current Month	Current YTD	Budget	Variance	%
Revenue						
310001	PROPERTY TAXES	48,681.82	1,912,437.22	2,544,185.00	-631,747.78	75
310002	DISCOUNT PROPERTY TAXES			-106,856.00	106,856.00	
335600	STATE AID			44,626.00	-44,626.00	77
Total Revenue		48,681.82	1,912,437.22	2,481,955.00	-569,517.78	77
Expenses						
411600	LIBRARY					
110	PERMANENT EMP SALARIES	94,511.70	325,268.45	1,315,880.00	990,611.55	25
114	PART TIME SALARIES	6,742.31	23,925.65	134,448.00	110,522.35	18
220	SOCIAL SECURITY	7,425.05	25,524.50	110,686.00	85,161.50	23
230	RETIREMENT	15,074.74	51,855.74	212,865.00	161,009.26	24
240	WORKFORCE SAFETY INSURANCE		676.95	3,124.00	2,447.05	22
250	UNEMPLOYMENT			500.00	500.00	
312	ATTORNEY			5,150.00	5,150.00	
320	HEALTH INSURANCE	14,756.49	52,262.21	195,241.00	142,978.79	27
340	EMPLOYEE DEVELOPMENT	4,005.24	6,591.30	12,950.00	6,358.70	51
356	TELEPHONE	188.53	565.71	3,044.00	2,478.29	19
360	PRINTING & MAILING PROJECTS	2,000.00	4,120.50	13,000.00	8,879.50	32
387	MEDICAL/VACCINES			500.00	500.00	
389	LEASE/RENTAL	13,809.65	64,716.14	199,211.00	134,494.86	32
399	RECRUITMENT/EMPLOYMENT TESTING			3,000.00	3,000.00	
410	OFFICE SUPPLIES	257.16	957.58	15,750.00	14,792.42	6
418	PROFESSIONAL SERVICES			3,000.00	3,000.00	
424	GAS AND OIL	6.40	54.26	2,000.00	1,945.74	3
427	VEHICLES MAINTENANCE			1,200.00	1,200.00	
428	SERVICE AGREEMENTS-CONTRACTS	769.17	5,376.37	22,008.00	16,631.63	24
490	MISC		54.21	500.00	445.79	11
497	TECHNOLOGY	509.23	4,534.01	37,379.00	32,844.99	12
500	SUPPLIES			850.00	850.00	
641	FURN & EQUIP-NON DEPRECIATED <\$5000	1,551.00	1,551.00	11,520.00	9,969.00	13
644	POSTAL METER RENT			2,772.00	2,772.00	
648	PROFESSIONAL PUBLICATIONS			535.00	535.00	
649	PROGRAMMING	29.98	810.59	16,000.00	15,189.41	5
650	E RESOURCES	2,654.28	17,708.13	44,065.00	26,356.87	40
662	BOOKS	3,713.39	24,370.16	112,324.00	87,953.84	22
663	MAGAZINES		4,572.07	4,850.00	277.93	94
664	AUDIO VIDEO	2,430.06	5,950.89	16,250.00	10,299.11	37
667	MEMBERSHIPS		1,549.00	4,320.00	2,771.00	36
669	INSURANCE			6,056.00	6,056.00	
672	EMERGENCY MEDICAL SUPPLIES		108.72		-108.72	
680	Library of Things		129.98	4,500.00	4,370.02	

Combined Funds

		----- Current Year -----				
Account Object	Description	Current Month	Current YTD	Budget	Variance	%
689	PROMOTIONAL ACTIVITIES	103.53	254.21	13,680.00	13,425.79	2
740	SERVICE CHARGES	138.00	561.95	1,750.00	1,188.05	32
880	COST ALLOCATIONS	4,454.42	17,817.68	53,450.00	35,632.32	33
890	TRANSFERS OUT			10,000.00	10,000.00	
901	CATALOGING			3,210.00	3,210.00	
994	ODIN		29,249.20	34,500.00	5,250.80	85
	Total Account	175,130.33	671,117.16	2,632,068.00	1,960,950.84	25
	Total Expenses	175,130.33	671,117.16	2,632,068.00	1,960,950.84	25
	Net Income from Operations	-126,448.51	1,241,320.06			
Other Revenue						
360000	MISCELLANEOUS REVENUE	1,611.31	4,487.07	5,000.00	-512.93	90
360100	SPONSORSHIPS	360.00	409.96	3,000.00	-2,590.04	14
361000	INTEREST ON INVESTMENTS		37,692.81	142,113.00	-104,420.19	27
375000	DONATIONS	500.00	500.00		500.00	29
	Total Other Revenue	2,471.31	43,089.84	150,113.00	-107,023.16	29
	Net Income	-123,977.20	1,284,409.90			

Note: Formula for % columns = revenue*100/total expense for Fund.



2025 West Fargo Public Library Annual Report

TABLE OF CONTENTS

- 3** Introduction
- 4** Governing Principles and Board
- 5** Organizational Chart
- 6** 2025 Highlights
- 8** Library Usage by the Numbers
- 10** Top Circulated Items
- 11** Our Collections
- 12** Youth Services
- 14** Adult Services
- 16** Community Engagement & Partnerships
- 17** Friends of the Library
- 18** Financial Reports

INTRODUCTION

2025 was another year of remarkable growth and transformation for the West Fargo Public Library. I am thrilled to share some updates and milestones that have shaped our library this year.

First and foremost, we celebrated the grand opening of our second library location! This new space has allowed us to reach even more members of our community, offering expanded access to resources and study spaces. The response from patrons has been overwhelmingly positive, and we are so grateful for your enthusiasm and support as we make our library even more accessible.

We also undertook a long-awaited renovation this year: replacing carpeting in the main library. This fresh update has revitalized our space, creating a more welcoming and comfortable environment for all visitors. Thank you for your patience during the process and for embracing the changes with us.

2025 was also a record-setting year for circulation at the West Fargo Public Library. More books, movies, and materials were checked out than ever before. This continues to be a trend in our community and is a true testament to West Fargo's love of reading and learning. We also saw the continued popularity of our programming, especially our in-demand storytimes and book clubs.

I want to acknowledge the hard work, passion, and creativity of West Fargo Public Library staff, who are instrumental to the library's success. From the front desk staff and program leaders to those who work behind the scenes, every member of our team plays a vital role in the impact we have on our community.

Thank you for taking the time to review our 2025 Annual Report. We look forward to serving you in the year ahead and continuing to grow together.



Library Director Jenna Kahly

With gratitude,
Jenna Kahly

Director, West Fargo Public Library

MISSION

As a civic resource, the West Fargo Public Library's mission is to provide equitable access to resources and opportunities so that residents can achieve their goals, explore their passions and develop social connections.

VISION

We envision a library whose services ensure that every person has resources and opportunities to learn, meet, share, read, play and create.

STRATEGIC PLAN

CORE VALUES

Compassion
Community & Connection
Growth & Learning

AREAS OF FOCUS

Access to the Library
Representative Services
Lifelong Learning
Growth of the Library
Fostering Social Connections
Community Partnerships

BOARD OF DIRECTORS

President Liann Hanson

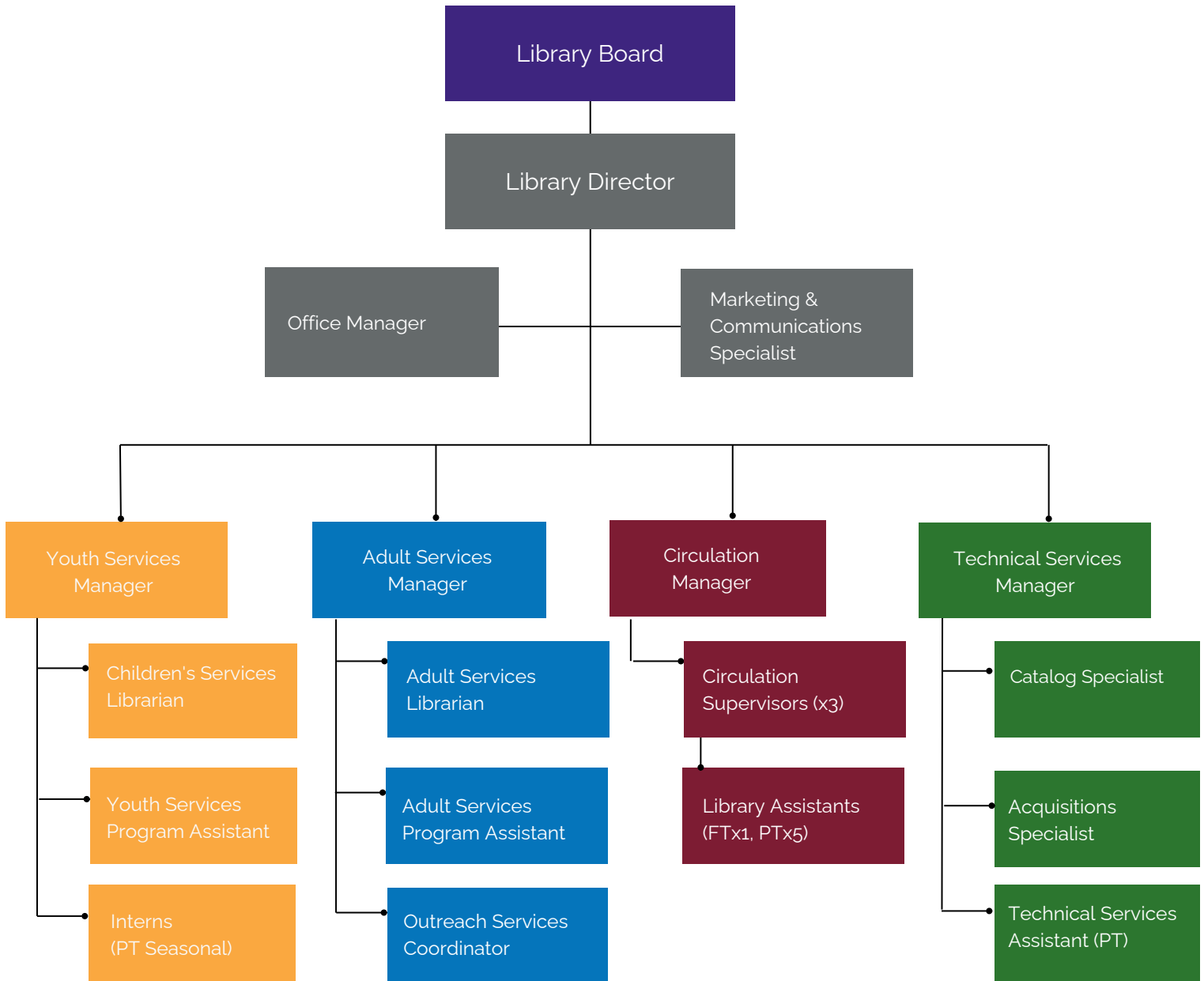
Vice President Commissioner Roben Anderson

Treasurer Tony Stukel

Member Tyler Erickson

Member Sara Westall

ORGANIZATIONAL STRUCTURE



In 2025, the West Fargo Public Library staff consisted of 18 full-time and 8 part-time positions, organized into five teams: **Administration**, **Youth Services**, **Adult Services**, **Circulation**, and **Technical Services**.

January

West Fargo Public Library hours change, closed all Sundays

Annual Staff Awards: Alisha Reis & Cassie Klos recognized

February

Friends of the WFPL raise money for library programs through Giving Hearts Day

Empowered Parents Expo connects parents with community resources

March

Teeter Tots Storytime sees record 72 attendees in one morning

Satellite Library at West Fargo City Hall opens March 18

April

Color Reading Challenge gives readers a taste of Summer Reading theme

2024 Annual Report presented showing record physical and electronic checkouts

May

Third Circulation Supervisor role added

Annual Summer Boost Kickoff Party and Model Train events bring 637 people to the library to celebrate

June

Summer Boost weekly programming at the library and Library on Wheels route at local parks run all of June and July.

Service Area change takes effect, prioritizing library services for City of West Fargo residents, while increasing promotion of options for out-of-area users

July

New Board Members Tyler Erickson and Sara Westall begin three-year terms

Summer Boost reading challenges end July 31 with 678 readers tracking 8,765 hours
Circulation hits all-time high with over 25,000 checkouts in July

August

New text service allows patrons to text keywords for account information

Library participates in dozens of community events like Redhawks Library Night, Night to Unite, Pride in the Park, Be My Neighbor Day, and pop-ups at elementary schools

September

Library hosts Genre Reading Challenge for adults and partners with West Fargo Public Schools for Middle School reading challenges

October

Nearly all staff attend North Dakota Library Association Conference in Grand Forks

Aging carpeting replaced in the first floor of Main Library location using Capital Improvement Sales Tax dollars; last update was over 20 years prior

November

Library Board approves updated Satellite Library at City Hall hours, adding Monday evenings; Monday Matinees will be held in Commission Chambers in 2026

December

Mitten Tree Drive, Library Superfan Program, and the Winter Reading Challenge begin

SATELLITE LIBRARY OPENS

In March, the West Fargo Public Library opened a second location within the new West Fargo City Hall. Located adjacent to the Commission Chambers on the first floor of City Hall, the Satellite Library operates as an express version of the Main Library offering traditional library services and titles from all WFPL collections, a small children's corner, two study rooms, public computers and printing, and a place to pick up holds. In this first year, it was open 10 a.m. to 4:30 p.m. Tuesday through Friday and received many positive comments from residents of neighborhoods south of I-94.



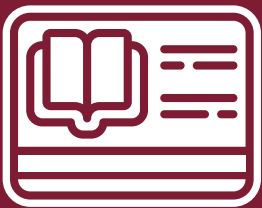
CARPET UPGRADE

In October, outdated carpet on the first floor of the Main Library was replaced with new, high-quality, and long-lasting carpet squares. This project required coordination between contractors and the entire library staff to keep library services as accessible as possible during the project. Thousands of items and dozens of heavy shelving units were moved multiple times over the course of the project. Instead of fully closing or canceling programs, staff worked extended hours at the Satellite Library and popular programs shifted locations and formats during the project. Carpet had not been updated in the library since 2005.



LIBRARY USE BY THE NUMBERS

In 2025, the West Fargo Public Library continued to grow alongside the vibrant community we serve. With more people visiting our Main Library than ever before and the addition of the Satellite Library at West Fargo City Hall, the numbers in this section reflect the community of readers we serve and the hard work our team does every day to support them. Whether residents were checking out items, using our study rooms, learning something new, or simply relaxing in our welcoming spaces, the library was a hub of activity in 2025. We look forward to continuing to be a hub of knowledge, creativity, and social connection for years to come.



19,126
active library cards in 2025

70,888

visits to a West Fargo Public Library location in 2025



3,884 new library cards issued in 2025

16,734

library event attendees in 2025

5,617

total sessions on public computers in 2025



18,557 WiFi sessions in 2025

Public Meeting & Study Spaces

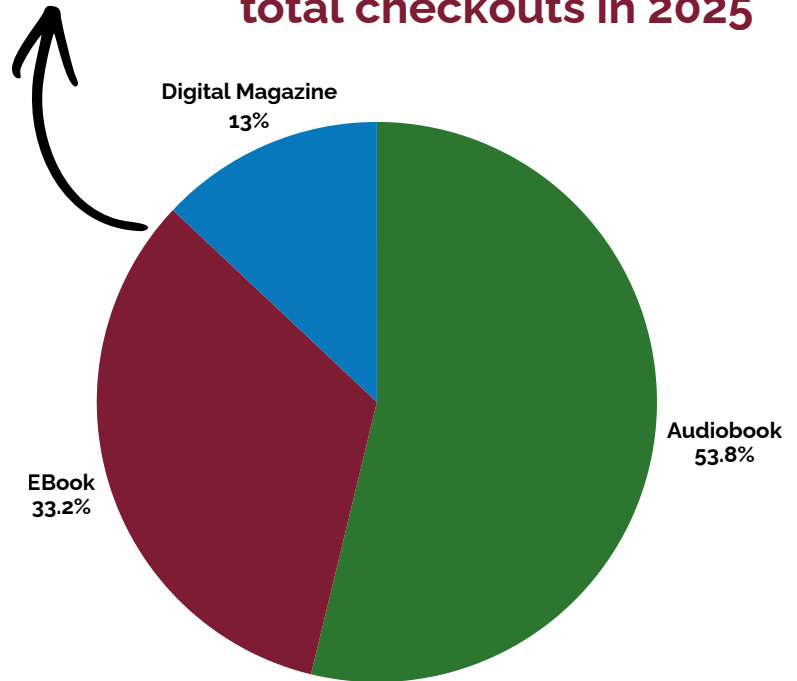
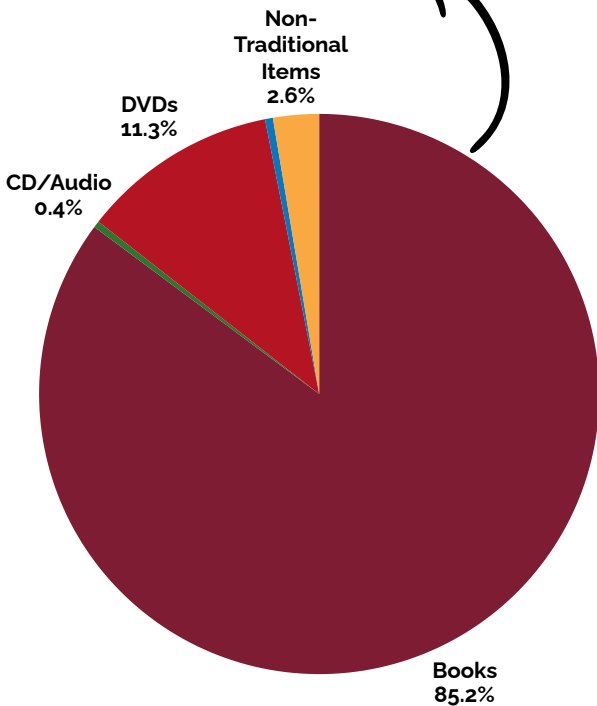
The West Fargo Public Library has a variety of spaces available for the public to reserve and use. At the Main Library, two meeting rooms and one small study space are available to checkout when they aren't in use by staff. At the Satellite Library, two small study rooms are available for walk-in use. People and organizations reserve these rooms for a variety of reasons, from study groups and clubs to interviews and auditions.

Total Hours Reserved



$$158,628 + 84,249 = 242,877$$

Physical item checkouts Libby checkouts total checkouts in 2025



Non-Traditional Items for Checkout

The West Fargo Public Library offers a variety of items for checkout in addition to traditional library books. Patrons can also check out Launchpads for all ages, WiFi hotspots, Ozobots, Memory Care Kits, Storytime Kits, and State Park passes.

760
checkouts of non-media physical items (kits, technology, etc.) in 2025

About our Service Desk Staff

In 2025, the Circulation team consisted of one full-time and five part-time Library Assistants, led by three full-time Circulation Supervisors, under the oversight of the Circulation Manager. This important team offers direct customer service to library patrons who call, email, or visit the library. Circulation team members check library materials in and out, help patrons find items, organize and shelve materials, maintain library records, issue library cards, manage interlibrary loans, assist with library technology, answer a wide range of questions, and much more.

ADULT FICTION
TOP 10 ITEMS



ADULT NONFICTION
TOP 10 ITEMS



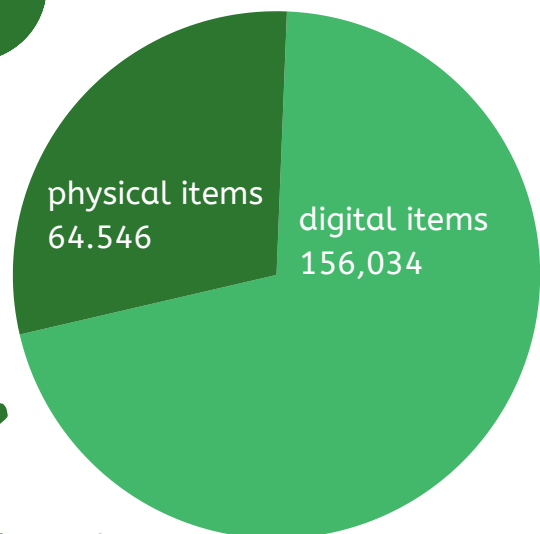
TEEN & YOUNG ADULT
TOP 10 ITEMS



OUR COLLECTION

220,580

total physical and electronic materials
available in library collection



About Collection Development and Technical Services

Over the years, the West Fargo Public Library's collection has continued to grow and evolve, reflecting our commitment to serving the community with representative resources. We offer thousands of physical materials in many different formats to meet community needs. In recent years, we have seen significant demand for digital items on Libby/OverDrive. In 2025, we offered over 64,000 digital titles, most with multiple copies available to help reduce waitlists and meet patron demand.

This extensive collection is maintained and developed by the Technical Services team, with help from Youth and Adult Services Managers and their Librarians, who help choose which items to purchase for their age groups and maintain the health of their collection through weeding projects. The Technical Services team works behind the scenes to acquire, organize, and manage the library's thousands of materials. They order and receive the new materials, label them for our shelves, and ensure the accuracy of all bibliographic data so items can be searched in the catalog. The Technical Services team also repairs damaged materials and is the first team called upon when items need to be moved, shifted, or reorganized during facility projects, which has happened several times in recent years.

In 2025, the Technical Services team consisted of a full-time Cataloging Specialist, a full-time Acquisitions Specialist, a part-time Technical Services Assistant, and the Collection Development & Technical Services Manager. Beyond their usual scope of work, this year the team worked hard to make browsing even easier for library users and to maintain access to materials during major facility projects. Special projects included:

- adding series labels to all Chapter Books
- cleaning up the records for all Picture Books
- managing the cataloging, labeling, and physical relocation of materials to the Satellite Library at West Fargo City Hall, providing essential support for launching the new branch
- coordinating the removal and reshelving of first-floor materials before and after the Main Library's carpet replacement, minimizing disruption and ensuring continued access to collections during construction

YOUTH SERVICES

In 2025, the Youth Services team consisted of one full-time Program Assistant and one full-time Children's Services Librarian, both reporting to the Youth Services Manager. The Outreach Services Coordinator also supported the Youth Services team with outreach services to daycares, offsite events, and the Library on Wheels route stops for people of all ages. In the summer, two interns supported the Youth Services team, too. The Youth Services team is responsible for youth programs at the library, including storytimes, Saturday STEM, reading challenges, and many other events for children and their families. They also assist in the development and maintenance of the library's youth collections.



13,885

reported participation in youth services programs



5,706

participants in early literacy programs (storytime) in 2025



Some Youth Services highlights for 2025 include:

- continued adapting and expanding storytimes due to popular demand, including adding additional sessions in the summer months
- introduced a new monthly storytime program for elementary-aged readers
- offered programs for kids on no-school days
- continued to offer teen programming, seeking input from attendees on how to better serve teens and giving them a positive space to explore creativity and make connections
- offered all-ages events, allowing families to participate in projects and activities together
- partnered with West Fargo middle school libraries to offer reading challenges during the school year
- adapted youth programs into take-home versions during library closures for facility projects



Library on Wheels

The Library on Wheels brings books and other activities out to local parks during its annual summer route. In 2025, library staff routinely visited three local parks and three local elementary schools during its 9-week route.

1740

books checked out
at outreach events
in summer 2025

746

attendees at Library
on Wheels events
in summer 2025

10,746

reading hours
tracked by
challenge
participants

Summer Boost

Every year, the library comes together to facilitate Summer Boost, an all-ages comprehensive summer program that includes the annual summer reading challenge, dozens of events for all ages, the Library on Wheels route, and more. In 2025, the theme was "Color Our World" celebrating colors, creativity and artistic expression.



1680

total books
delivered to local
daycares in 2025

Daycare Outreach

The West Fargo Public Library routinely serves children at West Fargo daycares, ensuring that children have a constantly evolving choice of books to explore and enjoy.

ADULT SERVICES

In 2025, the Adult Services team was made up of a full-time Adult Services Librarian, a full-time Program Assistant, and a full-time Outreach Services Coordinator. These roles are supervised by an Adult Services Manager. This team is primarily responsible for the planning and execution of adult programming at the library, including popular book clubs, technology tutoring, entertaining and educational classes for adults, routine deliveries to local senior living facilities, and more. They also assist with the development and maintenance of the library's adult collections.

This year, the Adult Services team worked hard to offer in-demand services to help library users explore their passions and achieve their various goals.

Some highlights include:

- continued offering five monthly book clubs, encouraging residents to explore new books and fostering social connections
- hosted opportunities for adults to explore different art mediums, such as watercolor, crochet, and hand sewing
- offered learning and wellness programs for senior residents, such as chair yoga, technology classes, and AARP presentations
- continued popular Monday Matinee free movie screenings, frequently reaching room capacity
- maintained programming despite turnover within the department

464

total attendance at
monthly library
book clubs in 2025

71

one-on-one
technology
tutoring sessions
in 2025

2849

total reported
Adult program
participants in
2025





ADULT OUTREACH DELIVERY SERVICES

In order to promote lifelong learning, create social interaction, and provide access to library services for those who may be unable to visit the library building, the West Fargo Public Library has made monthly deliveries to senior living facilities for over a decade. In 2025, the West Fargo Public Library served an average of 14 patrons each month at the following five senior living facilities.

Dakota Commons

Monterey & Brighton Place

Serenity Apartments

Sheyenne Crossings

New Perspective

498

total items
circulated through
senior deliveries
in 2025

42

average books delivered to
seniors each month
in 2025

15

average senior outreach
patrons served each
month in 2025

COMMUNITY ENGAGEMENT

In 2025, the West Fargo Public Library participated in a wide range of community events and programs. Through these events, the library was able to connect with people of all ages, and share information about the services and resources available at their local library.

2230

people engaged with
at community events
in 2025

Examples of Community Events Attended

Senior Expo

Be My Neighbor

FMWF Women Connect

West Fargo Street Fair

Osgood Elementary Family
Literacy Night

Legacy Elementary Family Night

Night to Unite

Redhawks Library Night

Eastwood Elementary Back to
School Bash

Pride in the Park

Blue Boo at the Zoo

COMMUNITY PARTNERS

The West Fargo Public Library's success can be largely attributed to the support of many partners, local businesses, organizations, and regional libraries. These partners sponsor and collaborate on library programs, donate funds and goods, and volunteer their time and skills to support and promote the library's importance within the community. The contributions of the following entities played a significant role in the library's achievements and impact in 2025.

AARP • Alzheimer's Association • Apex Physical Therapy & Wellness • Bank of North Dakota • Carl B. Ylvisaker Library • Cash Wise • Cass County Housing Authority • Community Options, Inc. • City of West Fargo • Civic West • Dakota Commons • Eventide • Fargo Cass Public Health • Fargo Public Library • Fargo Parks • First International Bank & Trust • FM Children's Museum • FM Redhawks • FMWF Chamber • Friends of the West Fargo Public Library • Folkways • Gooseberry Park Players • Historical and Cultural Society of Clay County • Junkyard West Fargo • Lake Agassiz Regional Library • League of Women Voters of the Red River Valley • Livingston Lord Library • Marvin • Metamoon Yoga • MSUM Planetarium • ND Autism Center • North Dakota State Library • NDSU Extension Program • NDSU Libraries • Ohnstad Twichell • Prairie Public • Project Linus • Red River Zoo • Sanford Health • Sanford Safe Kids ND • SENDCAA Head Start • Stage West • Thrivent • West Fargo Area Community Program • West Fargo Events • West Fargo Exchange Club • West Fargo Fire Department • West Fargo Parks • West Fargo Police Department • West Fargo Public Schools • West Funeral Homes • YMCA Northern Sky



FRIENDS OF THE LIBRARY VOLUNTEERS

West Fargo Public Library volunteers play an important role at the library. As they share their time and talents, volunteers make a real contribution to the quality of services the library is able to offer the community.

Everyone who volunteers at the West Fargo Public Library becomes an automatic member of the Friends of the West Fargo Public Library non-profit group. This organization is dedicated to helping the library make programming and resources more accessible to the community through volunteering, fundraising, and advocating for the library.

In 2025, Friends donations helped with things like furnishings for the new Satellite Library at West Fargo City Hall, prizes for reading challenge, and more.



2025 Officers

President

Mari Krajewski

Vice President

Scott Heidrich

Treasurer

Donelle Richmond

Secretary

Sara Westall

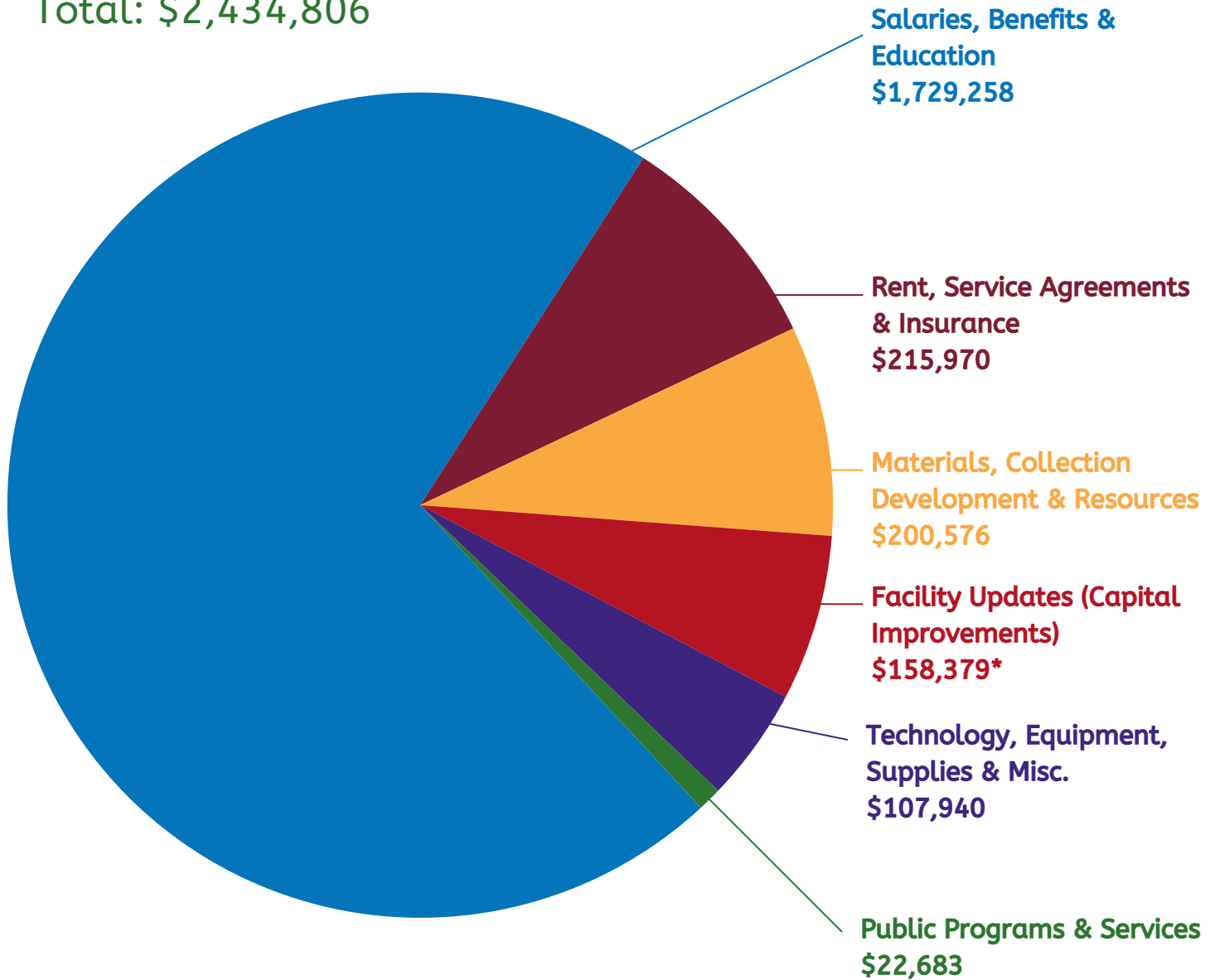
Social Media

Brianna Zenner

FINANCIAL OVERVIEW

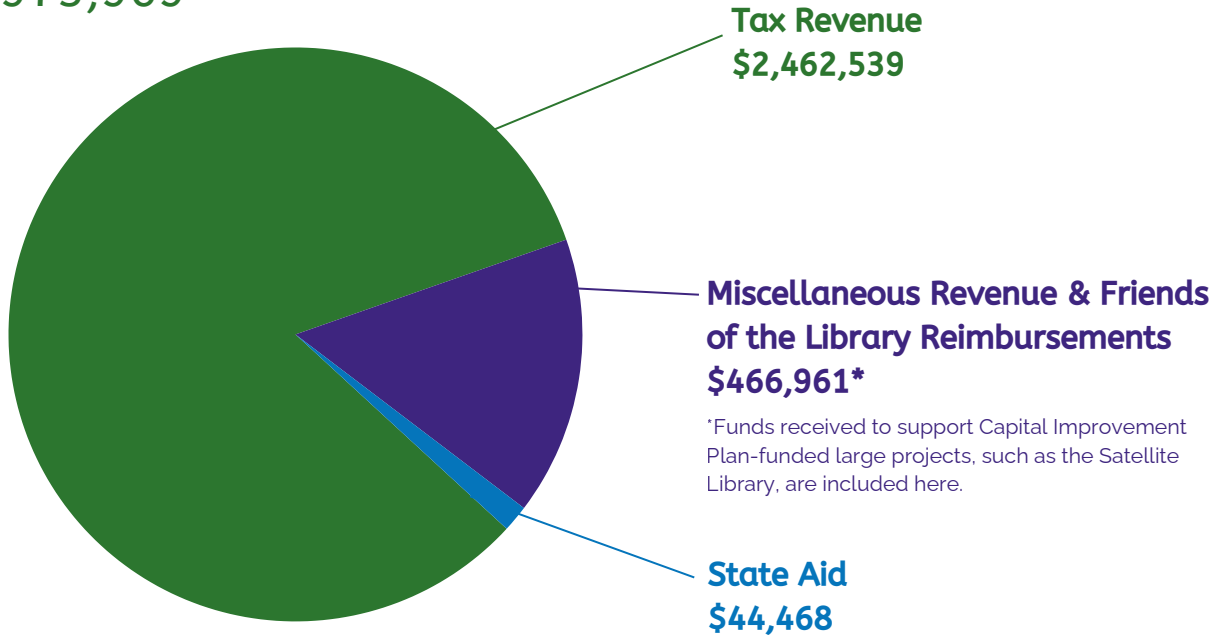
2025 Operating Expenses

Total: \$2,434,806



2025 Revenue

Total: \$2,973,969



\$3,984,787

estimated amount West Fargo residents saved by borrowing library materials instead of purchasing copies of books or media**

\$96

per West Fargo resident

\$208

per active library card

**Value derived from average item costs and number of 2024 checkouts.





THANK YOU!

Thank you for taking the time to read our 2025 Annual Report and for your continued support of the West Fargo Public Library.

CONNECT WITH US

www.westfargolibrary.org



[@WestFargoLibrary](https://www.instagram.com/WestFargoLibrary)

Department Description	Object	Object Description	24 Actual	24 Budget	25 Actual	25 Budget	2026	2026	2027	YOY Change	Comments/Notes
							YTD Budget	PY Budget	Budget		
LIBRARY	110	PERMANENT EMP SALARIES	1,098,684.14	1,079,955.00	1,176,669.74	1,210,859.00	146,199.81	1,315,880.00	1,396,778.00	80,898.00	
LIBRARY	114	PART TIME SALARIES	67,838.58	136,858.00	87,059.86	102,287.00	10,552.03	134,448.00	133,610.00	(838.00)	
LIBRARY	220	SOCIAL SECURITY	86,682.56	83,164.00	93,644.46	100,456.00	11,444.30	110,686.00	117,075.00	6,389.00	
LIBRARY	230	RETIREMENT	177,849.32	175,722.00	188,917.70	196,886.00	23,068.36	212,865.00	224,458.00	11,593.00	
LIBRARY	240	WORKFORCE SAFETY INSURANCE	2,019.43	2,384.00	2,068.26	2,996.00	0.00	3,124.00	3,304.00	180.00	
LIBRARY	250	DO NOT USE-UNEMPLOYMENT		500.00	-	500.00	0.00	500.00	0.00	(500.00)	
LIBRARY	312	ATTORNEY	1,000.00	4,000.00	-	5,000.00	0.00	5,150.00	5,150.00	0.00	
LIBRARY	320	HEALTH INSURANCE	155,452.07	205,554.00	170,754.10	266,649.00	23,526.35	195,241.00	258,892.00	63,651.00	
LIBRARY	321	PROPERTY INSURANCE	4,081.37	-	4,428.36	-	-	-	6,056.00	6,056.00	
LIBRARY	333	DO NOT USE-BUILDING RENTAL	124,002.00	124,002.00	150,239.07	161,051.00	-	-	0.00	0.00	Obsolete beginning 2026
LIBRARY	340	EMPLOYEE DEVELOPMENT*	3,833.20	18,060.00	8,097.75	15,950.00	1,913.06	12,950.00	10,950.00	(2,000.00)	
LIBRARY	356	TELEPHONE	2,638.43	3,300.00	2,630.70	3,060.00	188.59	3,044.00	3,044.00	0.00	
LIBRARY	360	PRINTING & MAILING PROJECTS*					2,077.94	13,000.00	15,000.00	2,000.00	11k from 661: Postage/ mailing/ printing?
LIBRARY	387	MEDICAL/VACCINES	-	500.00	-	500.00	0.00	500.00	500.00	0.00	
LIBRARY	389	LEASE/RENTAL					37,485.51	199,211.00	165,884.00	(33,327.00)	Moved from 333- Building Rental
LIBRARY	399	RECRUITMENT	1,656.00	3,000.00	-	3,000.00	0.00	3,000.00	3,000.00	0.00	
LIBRARY	410	OFFICE SUPPLIES	12,479.28	13,000.00	11,284.59	15,000.00	324.36	15,750.00	15,750.00	0.00	
LIBRARY	418	PROFESSIONAL SERVICES					0.00	3,000.00	3,000.00	0.00	Moved from 724- Consulting/Testing fees
LIBRARY	424	GAS AND OIL	-	1,200.00	261.54	2,000.00	20.41	2,000.00	1,000.00	(1,000.00)	
LIBRARY	427	VEHICLE REPAIRS	6.25	1,200.00	710.38	1,200.00	0.00	1,200.00	1,200.00	0.00	
LIBRARY	428	SERVICE AGREEMENTS-CONTRACT	11,068.62	10,260.00	11,032.60	11,952.00	3,661.58	22,008.00	24,008.00	2,000.00	
LIBRARY	490	DO NOT USE-MISC	44.99	500.00	75.89	500.00	82.00	500.00	0.00	(500.00)	OBSELETE FY27 Must recode / MOVED TO 662
LIBRARY	497	TECHNOLOGY	52,162.54	48,739.00	28,569.51	45,199.00	3,370.85	37,379.00	43,423.24	6,044.24	
LIBRARY	500	SUPPLIES	-	500.00	-	500.00	0.00	850.00	500.00	(350.00)	
LIBRARY	640	DO NOT USE- FURNITURE & EQUIPMENT	-	2,000.00	-	-	-	-	0.00	0.00	Obsolete beginning 2026
LIBRARY	641	FURN & EQUIP-NON DEPRECIATED <\$5000	22,486.95	43,178.00	4,994.42	10,000.00	0.00	11,520.00	21,084.00	9,564.00	
LIBRARY	644	DO NOT USE-POSTAL METER RENT	(73.69)	1,200.00	-	1,200.00	0.00	2,772.00	0.00	(2,772.00)	
LIBRARY	648	PROFESSIONAL PUBLICATIONS	38.01	3,000.00	-	1,000.00	0.00	535.00	555.00	20.00	
LIBRARY	649	PROGRAMMING	15,376.81	21,000.00	10,811.41	18,500.00	572.00	16,000.00	16,000.00	0.00	
LIBRARY	650	E RESOURCES	46,754.21	53,161.00	39,622.10	42,261.00	10,459.77	44,065.00	55,770.00	11,705.00	MOVED \$10,000 FROM 662
LIBRARY	653	CAPITAL IMPROVEMENTS	0.00	83,640.00	158,378.50	150,000.00		-	0.00	0.00	
LIBRARY	661	POSTAGE/FREIGHT/SHIPPING	9,526.62	10,000.00	10,526.42	11,000.00		-	0.00	0.00	
LIBRARY	662	BOOKS	98,955.64	88,950.00	106,503.61	107,245.00	10,066.46	112,324.00	124,714.00	12,390.00	MOVED \$500 FROM 490 / MOVE \$10,000 TO 650 / Combined
LIBRARY	663	MAGAZINES	5,062.39	5,500.00	4,921.01	4,700.00	4,572.07	4,850.00	0.00	(4,850.00)	COMBINED TO 662
LIBRARY	664	AUDIO VIDEO	17,538.47	25,650.00	17,415.63	16,250.00	1,814.52	16,250.00	0.00	(16,250.00)	COMBINED TO 662
LIBRARY	667	MEMBERSHIPS	3,734.60	4,039.00	2,046.00	4,050.00	1,132.00	4,320.00	4,700.00	380.00	
LIBRARY	668	DO NOT USE- PRINTING	443.56	1,000.00	394.13	1,000.00		-	0.00	0.00	Obsolete beginning 2026
LIBRARY	669	DO NOT USE-INSURANCE	617.00	2,750.00	-	3,000.00	0.00	6,056.00	0.00	(6,056.00)	
LIBRARY	672	DO NOT USE-EMERGENCY MEDICAL SUPPLIES	175.24	350.00	527.29	350.00	43.04	-	0.00	0.00	
LIBRARY	680	LIBRARY OF THINGS			3,218.80	4,500.00	0.00	4,500.00	4,500.00	0.00	
LIBRARY	689	DO NOT USE-PROMOTIONAL ACTIVITIES	7,998.32	11,400.00	11,871.97	13,680.00	93.69	13,680.00	0.00	(13,680.00)	MOVED TO 602 MARKETING
LIBRARY	724	DO NOT USE-CONSULTING/TESTING FEES	9,825.00	-	-	3,000.00		-	0.00	0.00	Obsolete beginning 2026
LIBRARY	740	SERVICE CHARGES	975.80	1,750.00	1,294.80	1,750.00	147.95	1,750.00	1,750.00	0.00	
LIBRARY	864	FURN & EQUIP DEPRECIATED > \$5,000	14,210.60	-	48,675.44	-		-	0.00	0.00	
LIBRARY	870	CAPITALIZED ASSETS - OVER \$5,000	52,273.00	-	-	-		-	0.00	0.00	
LIBRARY	880	COST ALLOCATIONS	44,099.04	46,646.00	48,264.96	47,919.00	4,454.42	53,450.00	63,549.00	10,099.00	Increase in custodian allocations per PW
LIBRARY	890	TRANSFERS OUT	-	10,000.00	-	10,000.00	0.00	10,000.00	10,000.00	0.00	
LIBRARY	901	CATALOGING	2,668.57	2,950.00	2,768.64	2,950.00	0.00	3,210.00	3,477.00	267.00	
LIBRARY	994	ODIN	25,491.00	24,200.00	26,126.67	25,000.00	29,249.20	34,500.00	35,000.00	500.00	
LIBRARY	602	MARKETING							13,680.00		MOVED FROM 689 PROMOTIONAL ACTIVITIES
Total			2,179,675.92	2,354,762.00	2,434,806.31	2,624,900.00	326,520.27	2,632,068.00	2,787,361.24	141,613.24	15

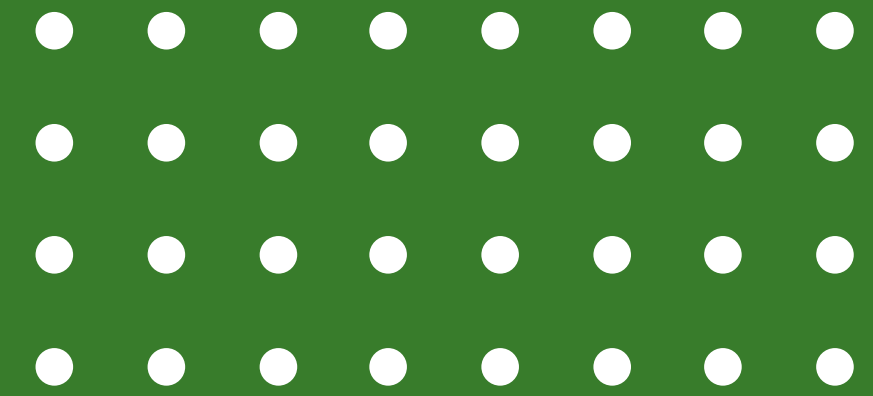


West Fargo Public Library ■ ■ ■
DIRECTOR'S REPORT

For May 14, 2026 Library Board Meeting
Presented by Jenna Kahly, Library Director



2026 Finances



Expenditures through April

Month to Date

\$174,992.33

Year to Date

\$670,979.16

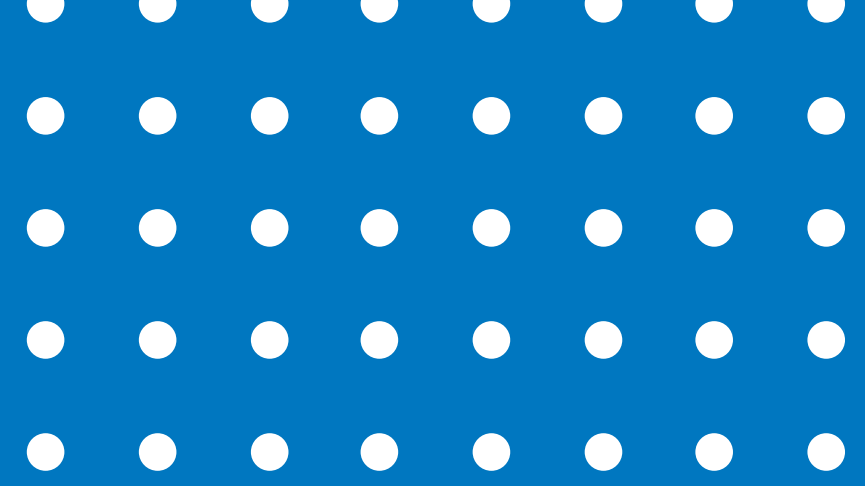
Available Appropriation

\$1,961,088.84





Satellite Library

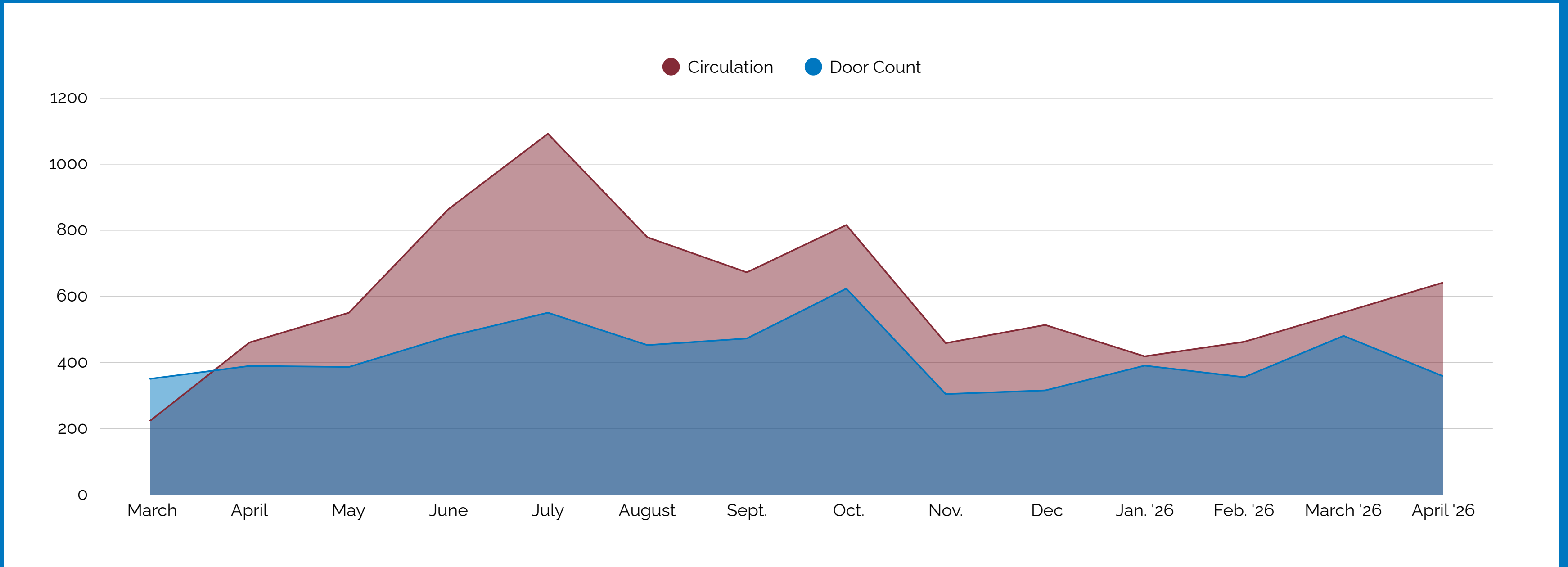


April Satellite Usage

Physical Circulation - 642

Door Count - 359

Library Cards Made - 10





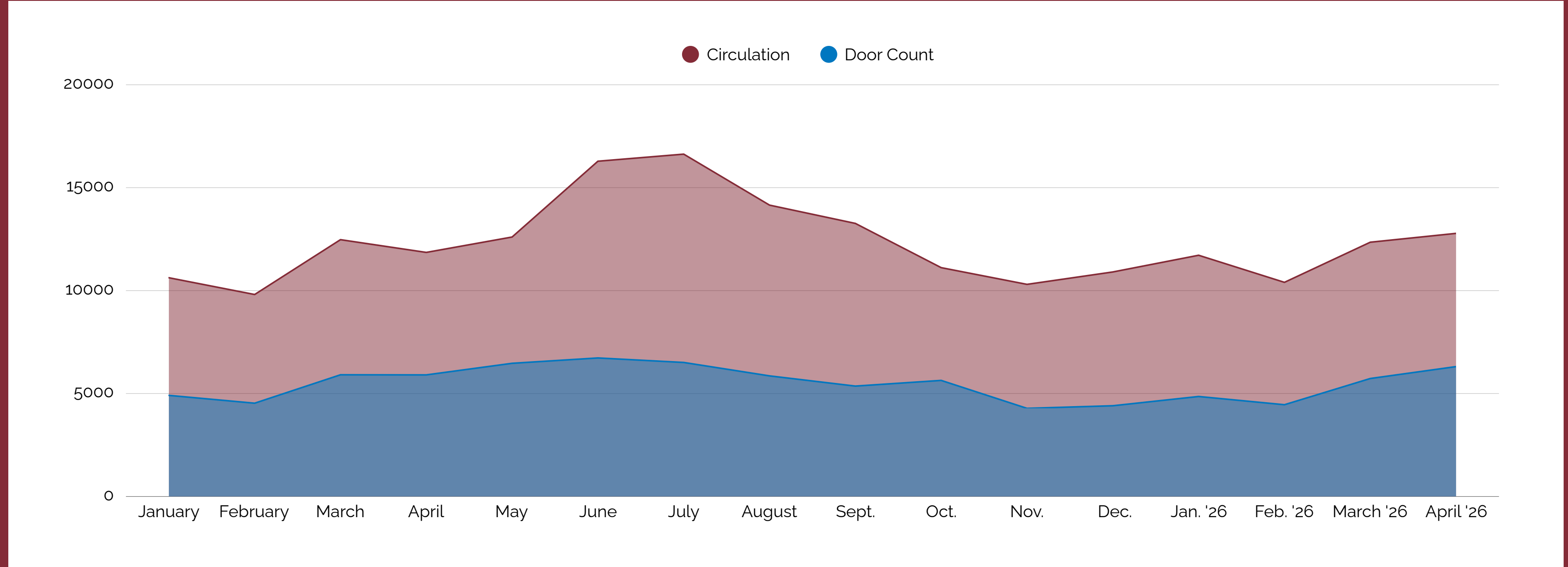
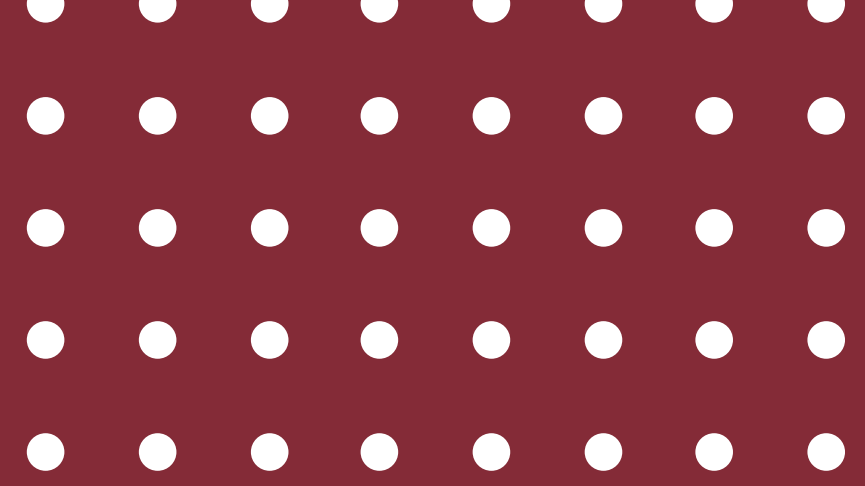
Main Library

April Main Library Usage

Physical Circulation - 12,351

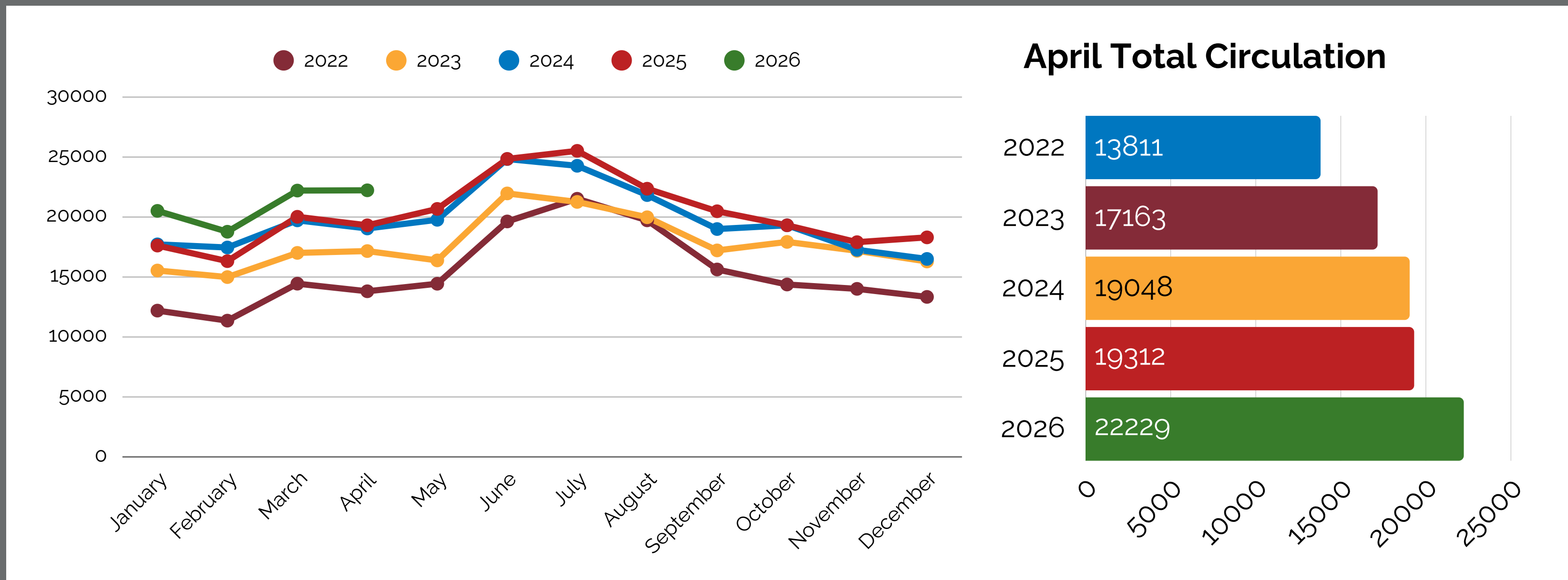
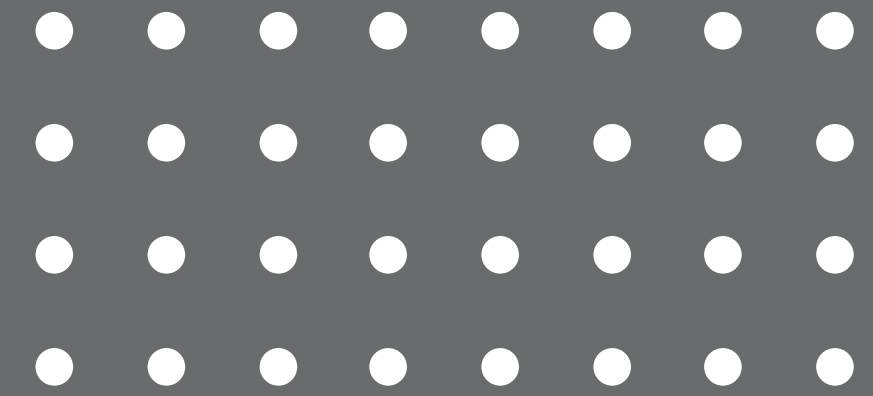
Door Count - 5,730

Library Cards Made - 192



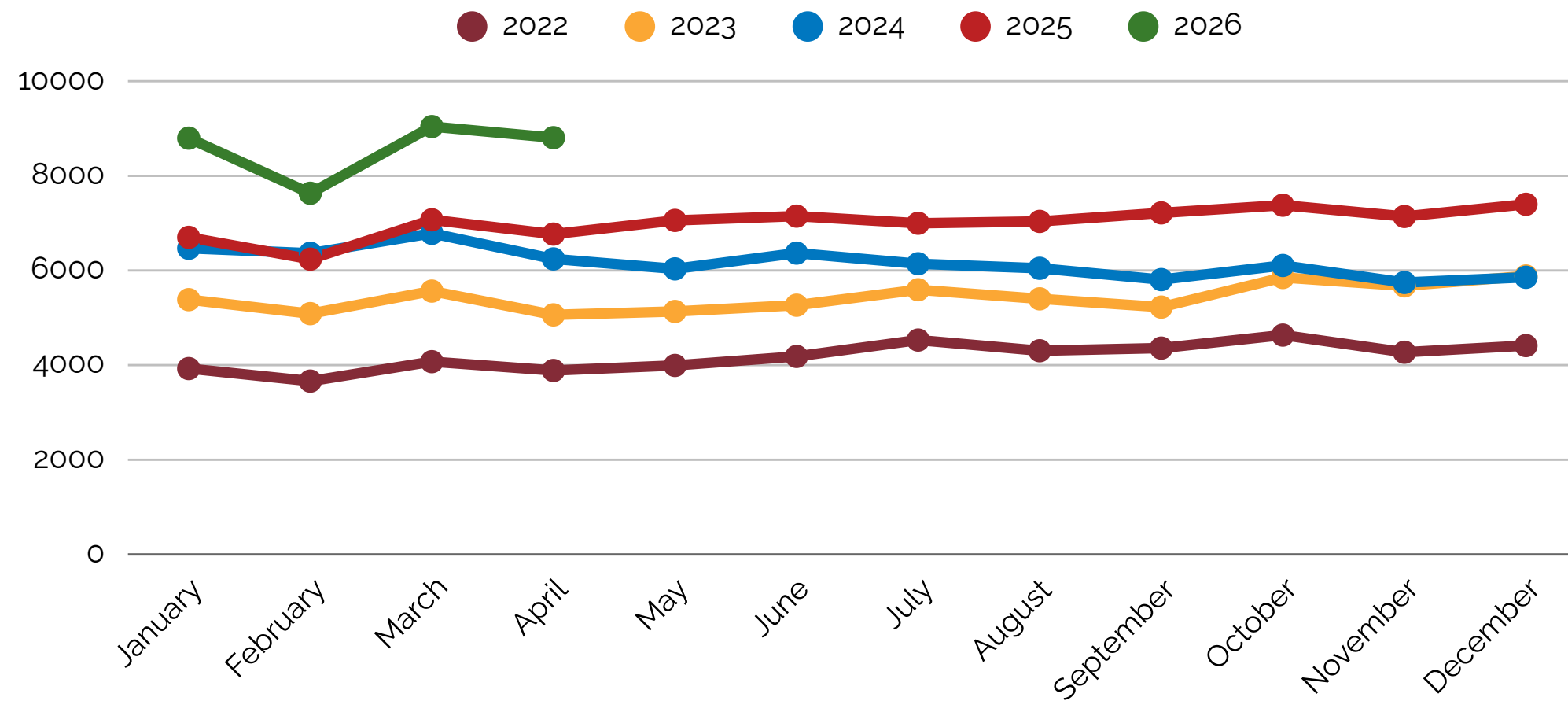
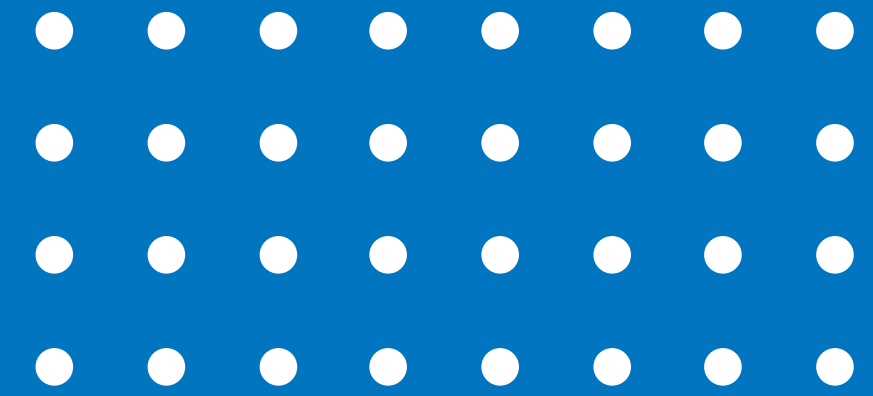


Total Circulation





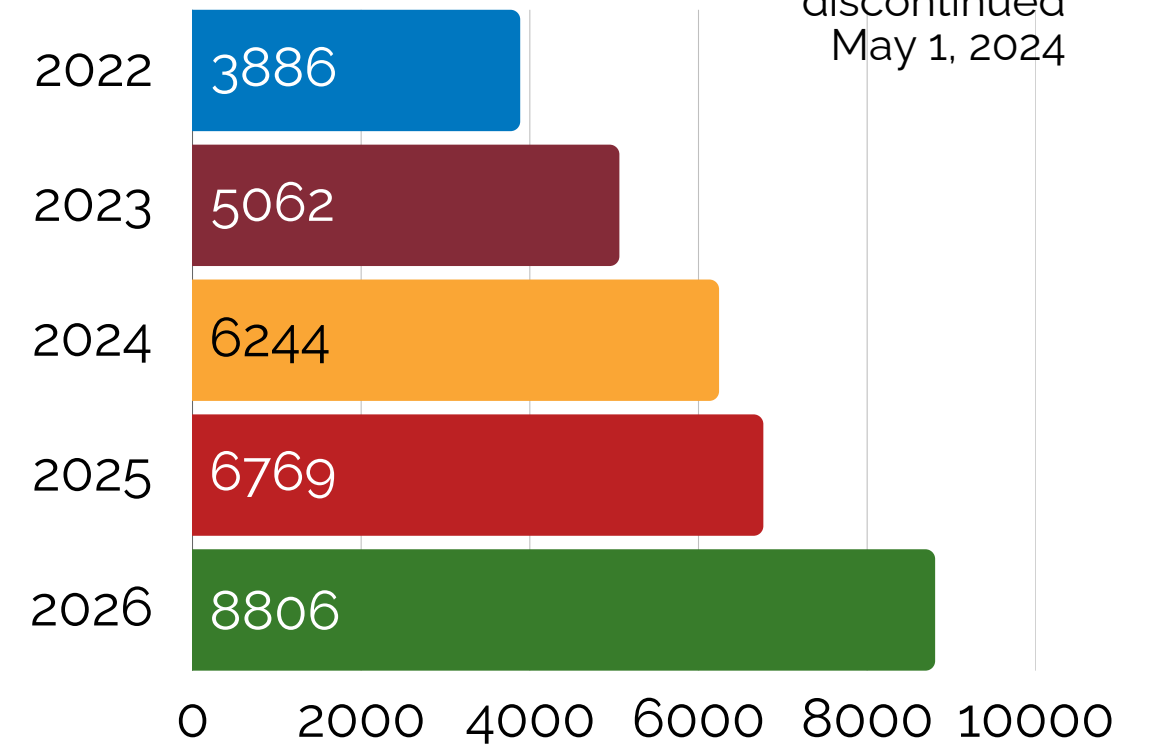
Electronic Circulation



April Digital Circulation

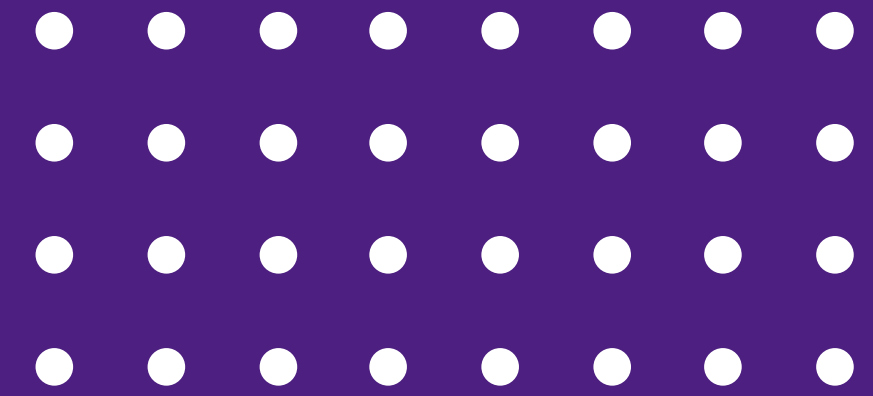
OverDrive/Libby & Hoopla*

*Hoopla was discontinued May 1, 2024



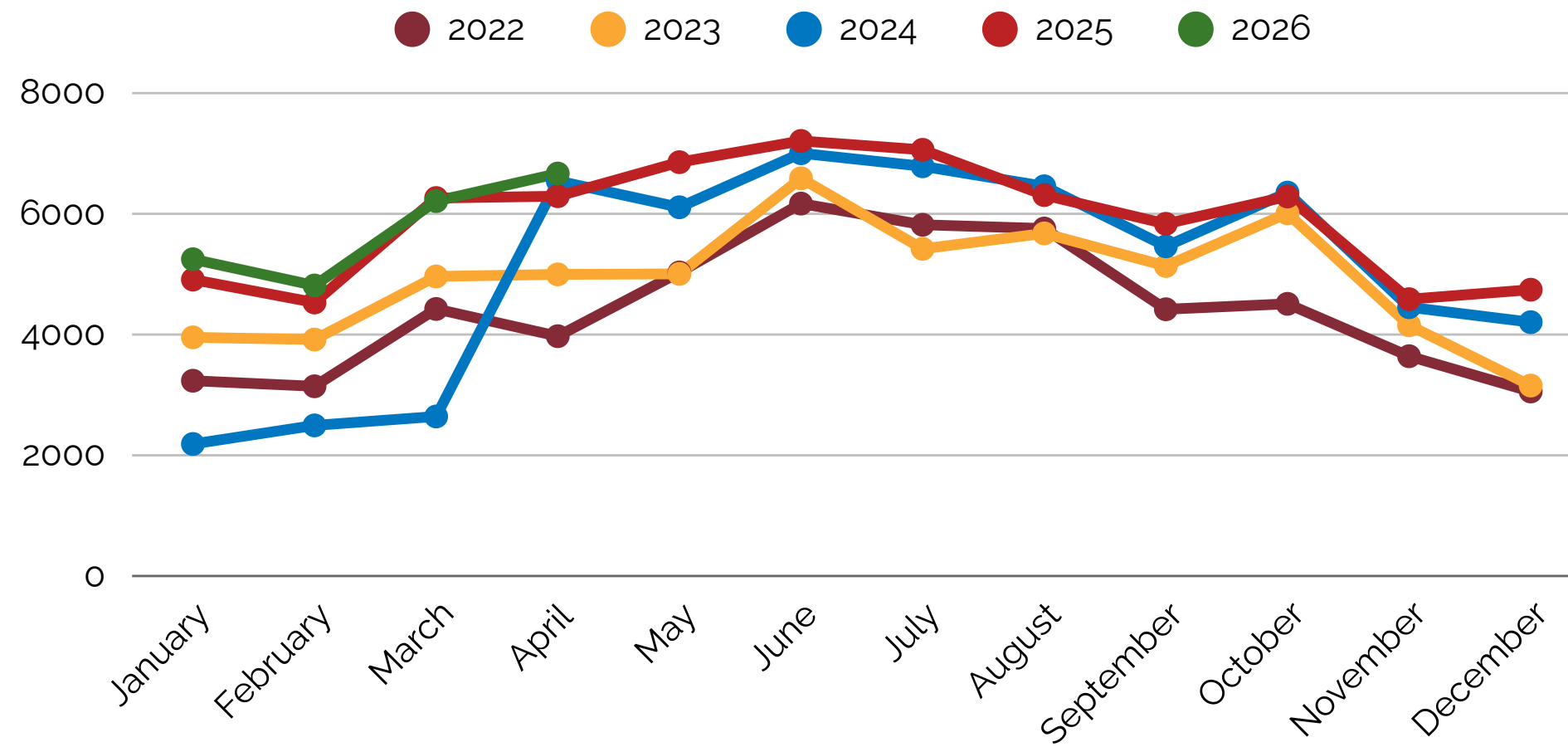


Door Count

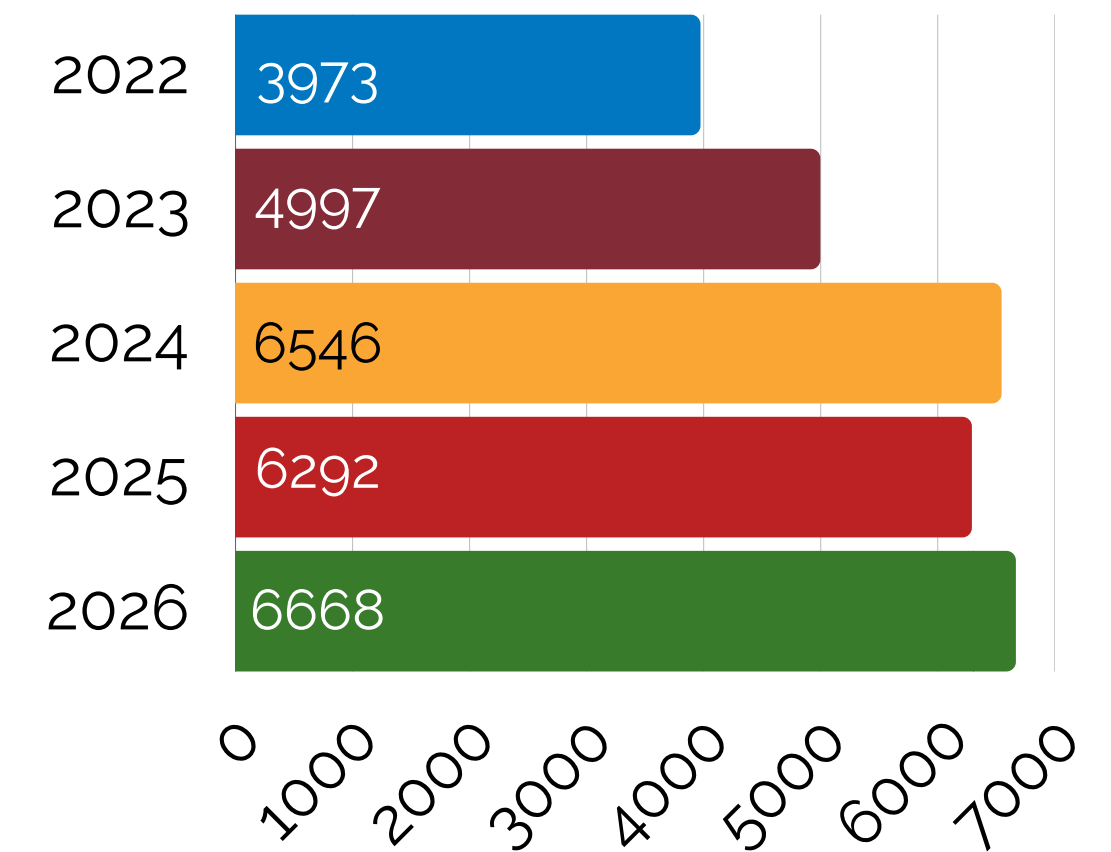


- Door count is back up, with record number of visits compared to past Aprils.

Total Door Count



Monthly Visits: April





Staffing Update

- Youth Librarian | Hired, starting in June
- Summer Interns | Hired, starting end of May

■ ■ ■ Adult Programs

Recent Updates

- Expanded senior outreach to include two staff at each site.
Increased in-demand engagement with residents.
- Technology Tutoring is back and in heavy use.
- New Golden Gatherings started Tuesday, May 12
- Recurring programs continued to be well-attended
- This team is working hard planning and preparing for summer. Some exciting new opportunities are on the way for adult patrons, like Silent Reading Parties in local parks

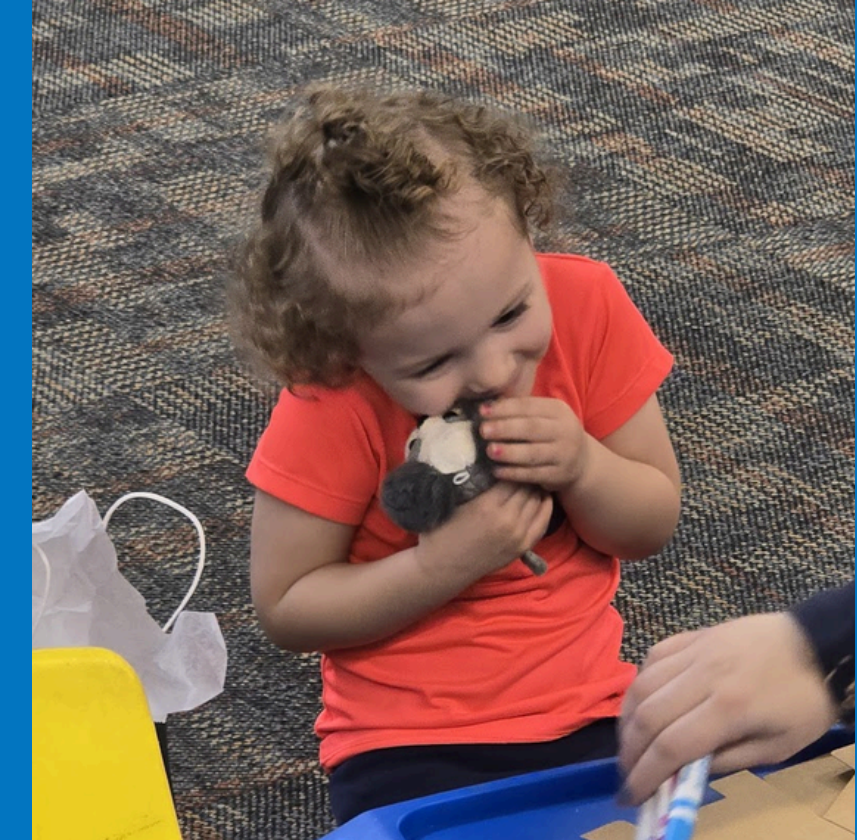
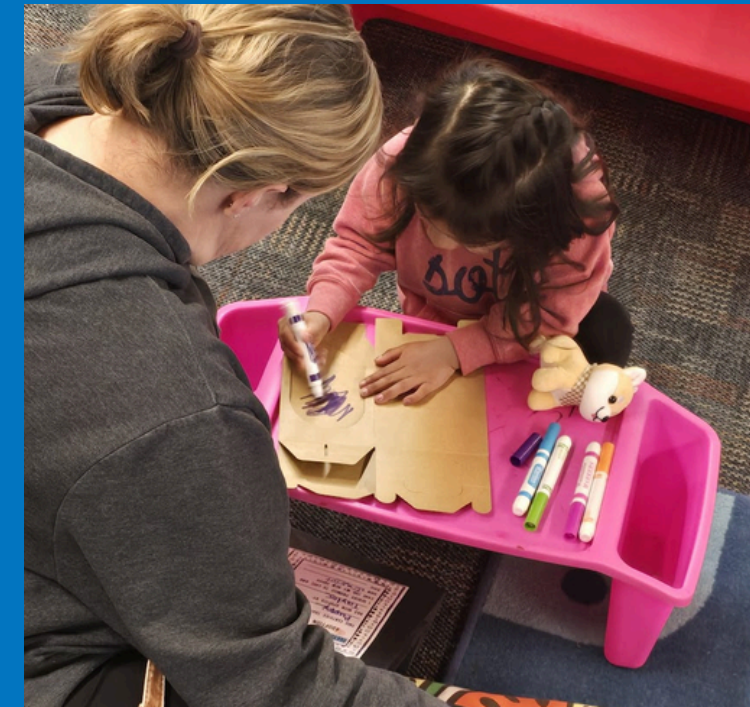


Meg, Adult Services Librarian, assists a resident at one of our senior sites during an outreach stop

■ ■ ■ Youth & Family Programs

Recent Updates

- **Second-Grade Tours** wrapped up in April. 1,087 students came through in March and April.
- **Storytime** numbers continue to rise.
- **March Madness Reading Challenge** ended April 12 with 252 participants.
- Team is hard at work planning and preparing for summer!
 - Reading Challenge registration now open on Beanstack; tracking starts June 1
 - Library on Wheels will visit 9 parks this summer
 - Weekly youth programs and expanded summer storytime schedule start June 1



A recent Teeter Tots Storytime session was all about pets, including “adopting” a puppy and designing a dog house for it.





Get ready
for a
ROARing
good time

UNEARTH
A STORY™

This summer's theme is exploring dinosaurs, paleontology, archeology and the wonders of our world through our challenge prizes and over 100 special events and programs at the library and beyond!

ANNUAL SUMMER KICKOFF PARTY

5 - 7 p.m. Thursday, May 28

Games • Snacks • Summer Reading Info •

Library on Wheels • Model Trains • Fun for ALL AGES

SUMMER READING CHALLENGE

Challenges available for all ages. Tracking starts June 1.

Read. Track. Earn Rewards.

UNEARTH
A STORY™

This summer's theme is exploring dinosaurs, paleontology, archeology and the wonders of our world through our challenge prizes and over 100 special events and programs at the library and beyond!



Sign up at westfargolibrary.org/beanstack



Goldenwood Park
 1330 5th St. NW
 9 - 10:30 a.m. Monday, June 8
 9 - 10:30 a.m. Monday, July 27

Tintes Park
 131 6th Ave. E
 5:30 - 7 p.m. Tuesday, July 21

West Fargo Public Library
 Main Location 215 3rd St. E
 Satellite Branch 2515 6th St. E

Elmwood Park
 500 13th Ave. W
 5:30 - 7 p.m. Tuesday, Aug. 4

Brooks Harbor Neighborhood Park
 1020 26th Ave. W
 5:30 - 7 p.m. Tuesday, June 16

Maplewood Park
 1504 17th Ave. E
 9 - 10:30 a.m. Monday, June 15
 5:30 - 7 p.m. Tuesday, Aug. 11

Rendezvous Park
 1055 32nd Ave W
 9 - 10:30 a.m. Monday, June 1
 5:30 - 7 p.m. Tuesday, June 23
 9 - 10:30 a.m. Monday, July 6
 5:30 - 7 p.m. Tuesday, July 28
 9 - 10:30 a.m. Monday, Aug. 10

River's Bend Park
 2541 1st St. E
 5:30 - 7 p.m. Tuesday, June 9
 9 - 10:20 a.m. Monday, July 13

Shadow Wood Park
 3545 4th St. E
 5:30 - 7 p.m. Tuesday, July 14

Dakota Park
 5600 9th St. W
 5:30 - 7 p.m. Tuesday, June 2
 9 - 10:30 a.m. Monday, June 22
 5:30 - 7 p.m. Tuesday, July 7
 9 - 10:30 a.m. Monday, July 20
 9 - 10:30 a.m. Monday, Aug. 3

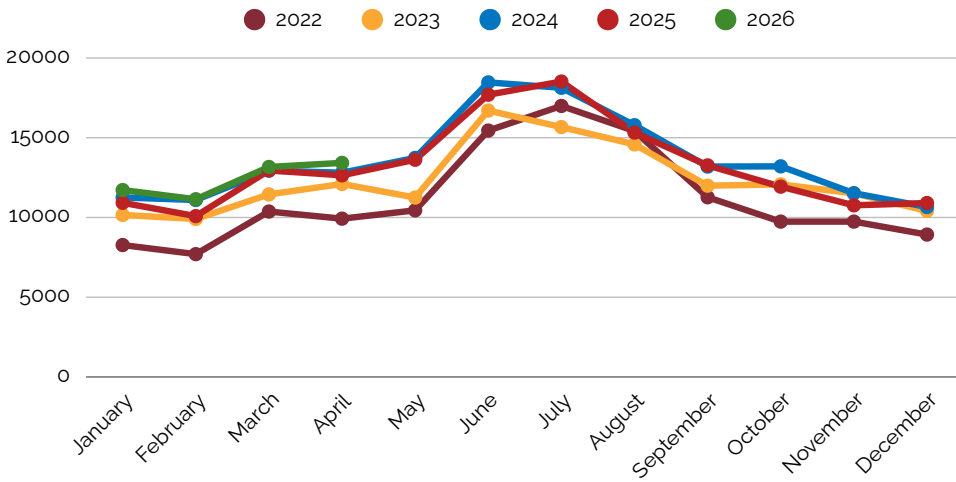




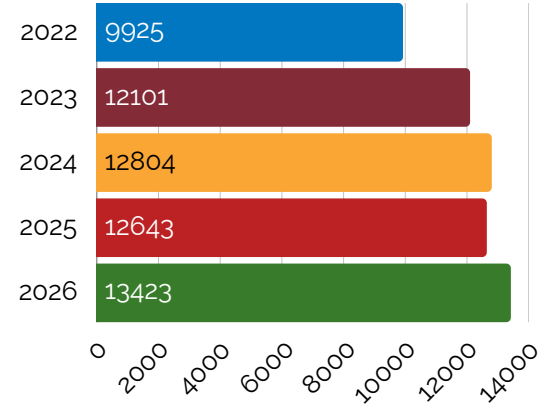
QUESTIONS? ■ ■ ■

Thank you for your time!

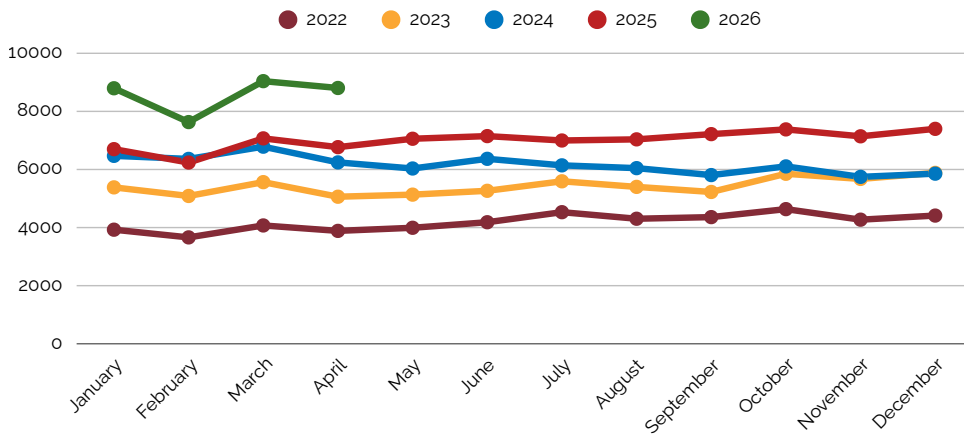
Physical Item Circulation - All Locations



April Physical Circulation

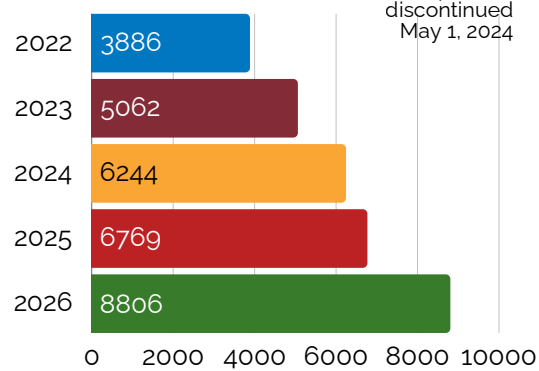


Electronic Materials Circulation

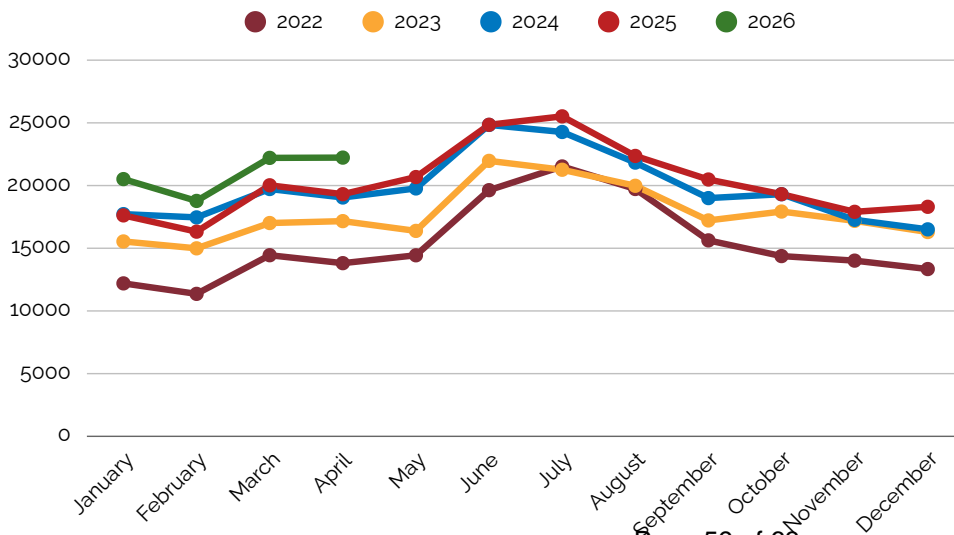


April Digital Circulation

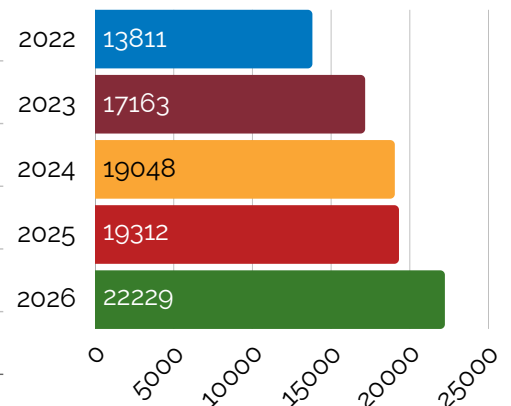
OverDrive/Libby & Hoopla*



Total Circulation

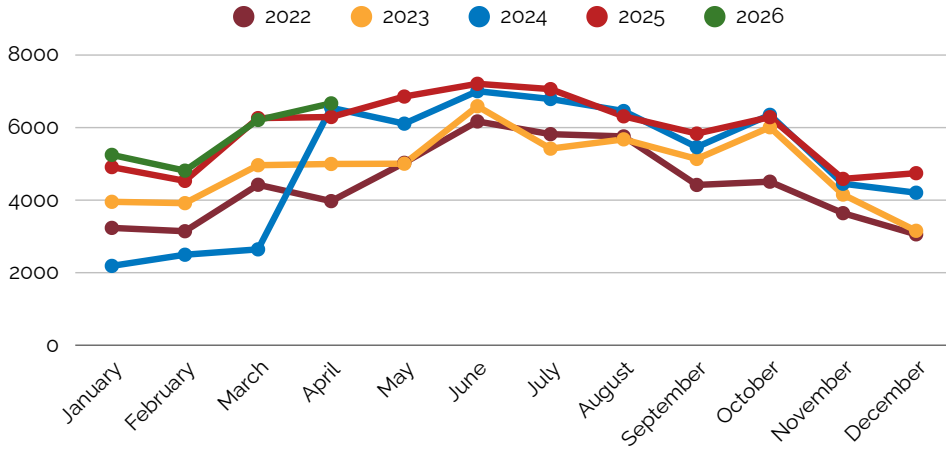


April Total Circulation

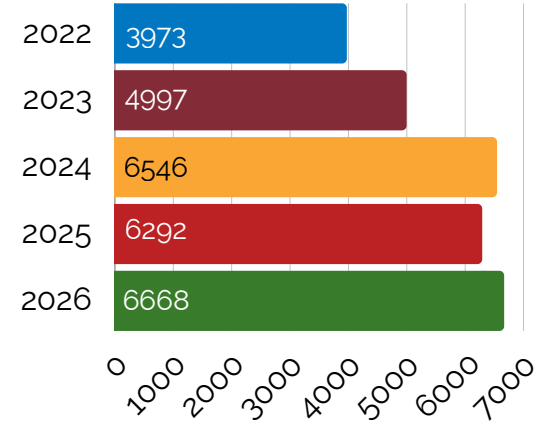


Door Count

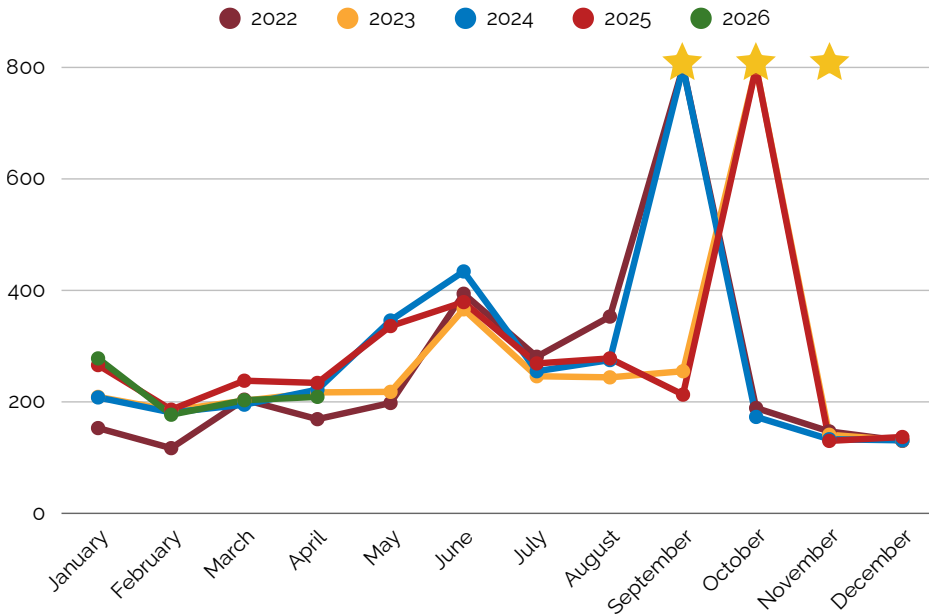
Total Door Count



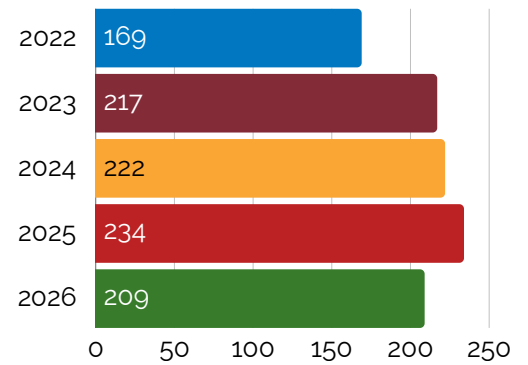
Monthly Visits: April



Library Card Signups



Monthly Library Card Signups: April

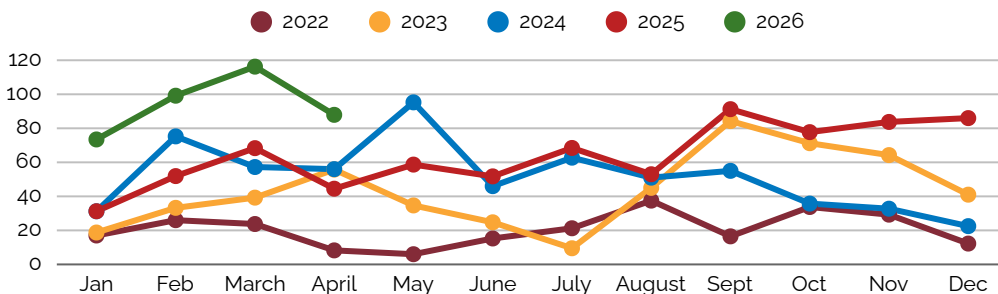


April Active Library Cards - 12,787

★ In Nov. 2021, the WFPL added over 5000 library cards through a partnership with West Fargo Public Schools. This partnership continues, with additions occurring in Sept. 2022, Oct. 2023, Sept. 2024, and Oct. 2025.

Meeting Room Usage

Meeting Room Hours Reserved



Total Meeting Room Use

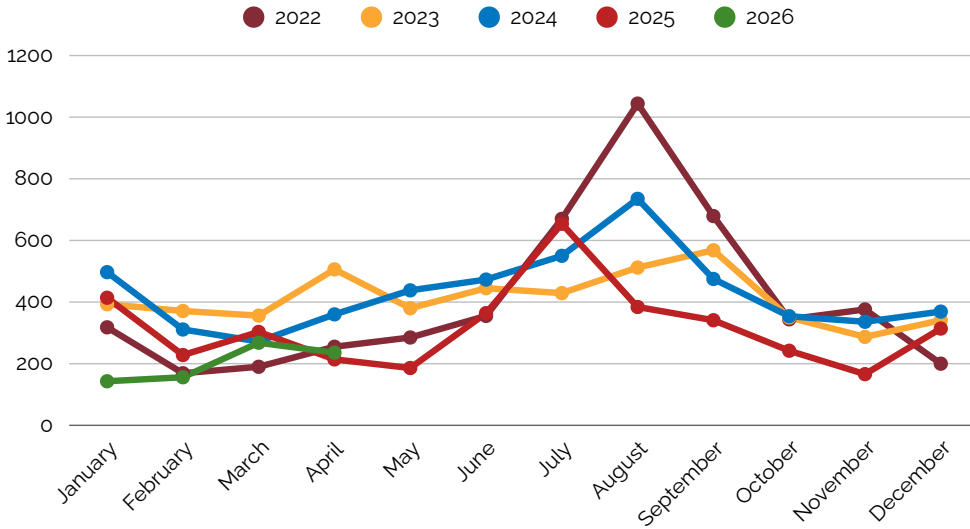
April Hours Reserved 87.92

Hours Reserved YTD 377

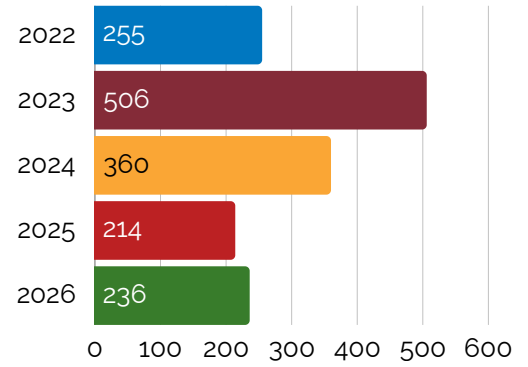
April Total Reservations 43

Reservations YTD 174

Offsite Book Drop Usage



April Offsite Book Drop Usage



Discontinued use of Eagle Run book drop in March 2025.

Outreach Services

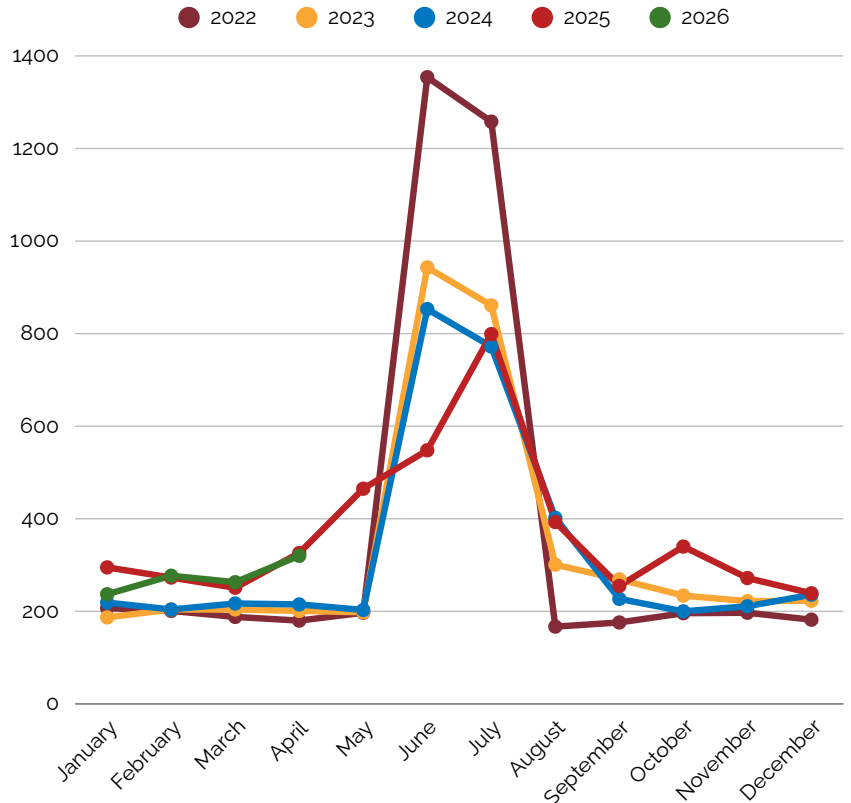
Monthly Outreach Circulation

Total Monthly Circulation*	2022	2023	2024	2025	2026
	180	201	215	326	320

*This number includes senior book deliveries, daycare book deliveries, and any books checked out from outreach pop-up libraries.

Outreach Deliveries and Item Circulation

- Senior Living Locations Served 5
- Senior Outreach Participants 16
- Daycare Locations Served 6
- Total Outreach Circulation 320

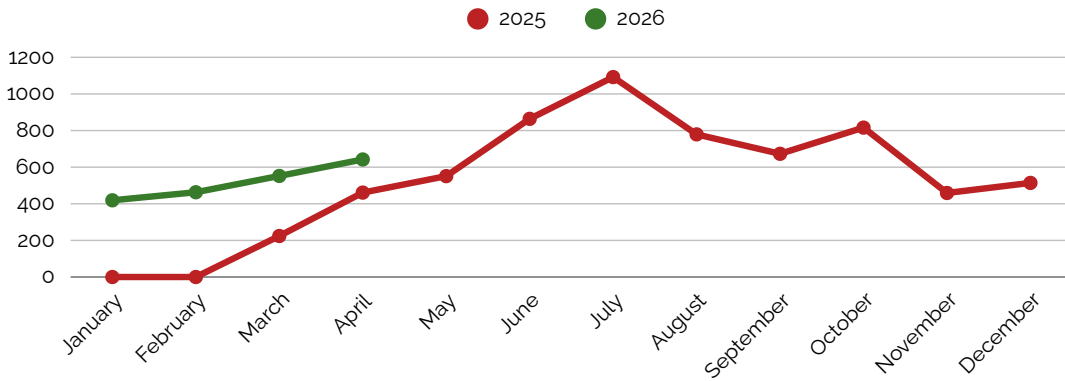


Outreach & Community Events Attendance

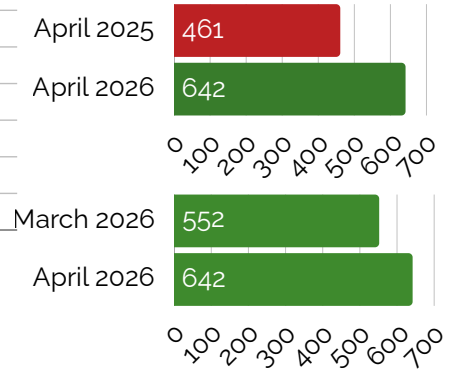
The West Fargo Public Library did not attend any community events in April.

Other Satellite Library Stats

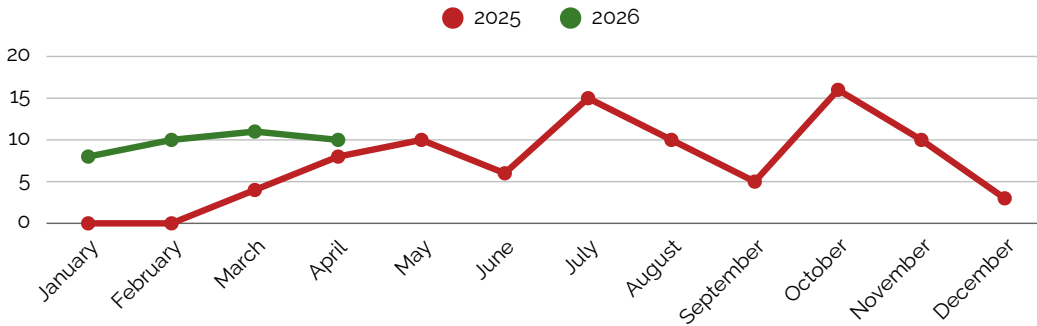
Physical Item Circulation at Satellite



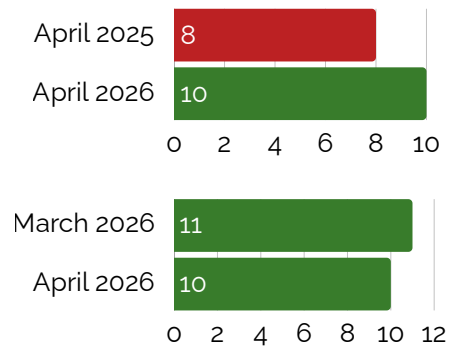
Monthly Satellite Circulation



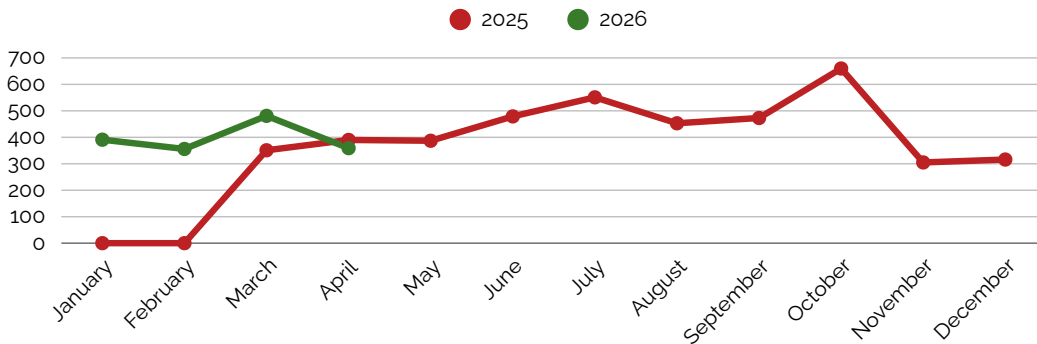
Library Card Signups at Satellite



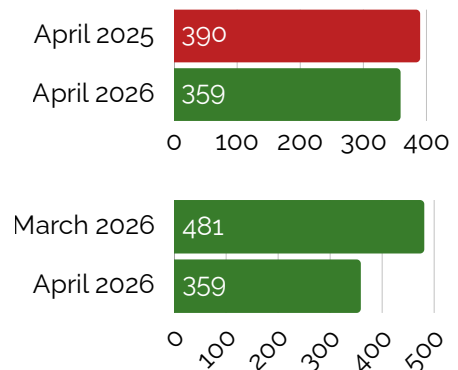
Feb. Satellite New Library Cards



Door Count at Satellite



Feb. Satellite Door Count



Programs

Program Attendance

Youth

Ready to Read Storytime	118
Baby Boost Storytime	117
Teeter Tots Storytime	176
Teen Events	8
STEM	0
Other Youth Events	598
Total Attendance	1017

Adult

Book Clubs	37
Movie Screenings	117
Writing Circle	9
Other Clubs	17
Other Events	0
Total Attendance	180

All-Ages

Spring Crafts	21
Total Attendance	21

Reference Services

Technology Tutoring	7
Notary Public	Paused
Total Attendance	7

Reading & Activity Challenges

Career Readiness Challenge (Ongoing)

Monthly New Registrations	6
YTD Registrations	14
Lifetime Registrations	92

1000 Books Before Kindergarten (Ongoing)

Monthly New Registrations	4
YTD Registrations	18
Lifetime Registrations	820

March Madness Reading Challenge (ended April 12)

Total Registrations	252
Challenge Completions	117

Youth Services is still helping facilitate reading challenges for area middle schools in addition to our challenges.

Total program attendees
(in-library & outreach event attendance in April 2026.
This count does not include reference services.) **1197**

